



Building Near Powerlines –

your responsibilities
as a land owner/occupier

Developing your property? Contact Aurora Energy before you start work to ensure you keep your family safe and to avoid having to move a structure or pay for the relocation of a powerline.

Building near electricity assets

Electricity should always be treated with respect, especially when undertaking any construction work near powerlines, such as building or extending. Remember, you don't have to touch the lines for fatal results. Electricity can arc or jump across a gap.

To protect people and equipment, minimum safe clearances have been established. These are legal requirements and they are there to protect lives. Overlooking or ignoring these requirements could result in building delays or even cost you your life.

Your responsibility

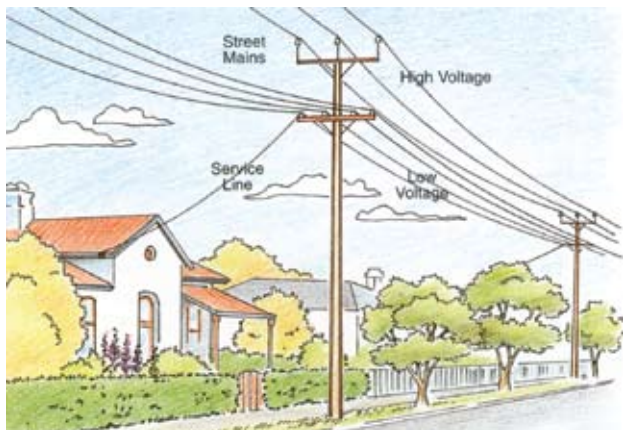
Did you know that as a landowner you are responsible for ensuring that all structures on your property are built outside powerline clearance zones? You are required to make sure that your architects, builders, landscapers and developers provide safe clearance distances and access to Aurora's assets.

The restrictions on building clearance zones near powerlines apply in addition to Council approval – so don't start building until you have checked that these requirements have been met. Failure to do so may result in the removal or relocation of your structure, or the relocation of the electricity assets at your expense.

Please see the section 'Powerline Clearance Zones' for help in determining the requirements of your site. If you are still unsure how this applies to your proposed structure please call Aurora on **1300 13 7008** for advice before starting any construction work.

Aurora can help

Aurora provides advice on safe approach limits to powerlines for people and construction equipment, access requirements to our electricity equipment, and on the clearance zones around our equipment. Gathering this information early can prevent you from making a costly mistake.



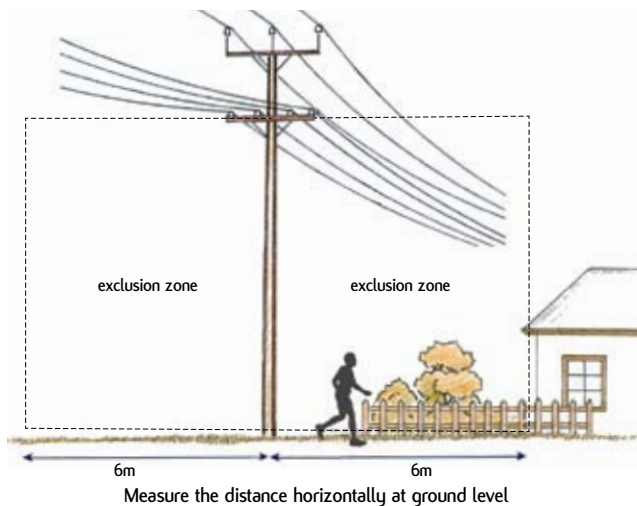
Powerline clearance zones

Overhead powerlines

The minimum safe clearance between powerlines and structures is six metres horizontally from the centre of the pole line (see diagram below).

When measuring the clearance distance it is important that you only measure it at ground level. **At no stage should you put any part of your body or an object within three metres of the overhead line.**

If you are unsure of the safe distance please contact us and we will measure the distance for you.





Avoid building under a powerline



Avoid blocking access to the connection point

These clearances should be considered when planning the following activities:

- change or alteration to any structure (i.e. buildings, decks, awnings, building sign, flag pole, pergola);
- altering the ground level;
- erecting a fence higher than two metres; and
- installation of any type of swimming pool.

It is unsafe to locate a swimming pool under any powerline.

Please note: the clearance restrictions explained above are for powerlines near completed structures. They are not safe working distances while building or operating machinery.

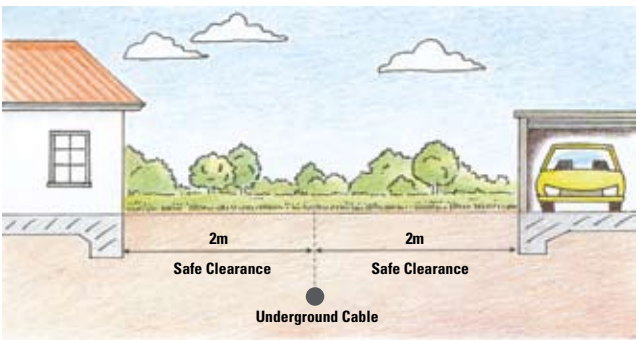
Please contact Aurora for a copy of our 'Guide to Working Safely Near Overhead Powerlines' brochure prior to commencing any work in or near our clearance zones.

Underground powerlines

Since the mid-1970s the majority of new powerlines in new housing developments have been placed underground. You should contact both Aurora and Dial Before You Dig on **1100** before starting any excavation.

The minimum safe clearance for underground powerlines is two metres either side. If your property is supplied from a turret (green box), you must not construct or place anything next to or over it – including fences, retaining walls and large rocks – which may prevent safe access.

If you require underground powerlines or any equipment owned by Aurora to be relocated, these requirements and any associated costs should be agreed with us well in advance of the commencement of any site works.



Electricity Infrastructure Easement

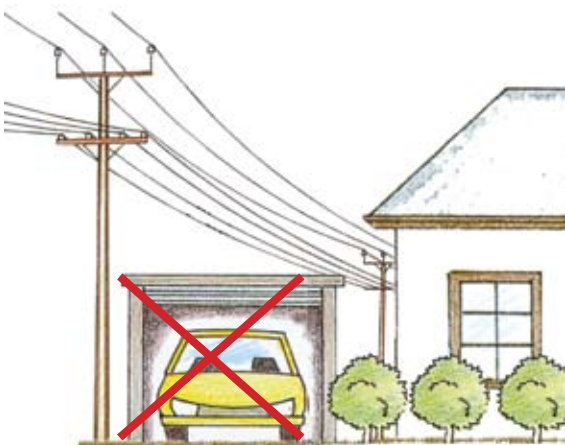
An electricity infrastructure easement is an area of land reserved for electricity assets.

Easements exist along the route of powerlines and other electricity assets to ensure the infrastructure can be accessed for maintenance and other work.

Aurora Energy hold three types of electricity infrastructure easements – registered, unregistered and statutory easements. Registered easements are registered on your land title documents. Unregistered easements are easements that were created by agreement with the landowners at the time the easements were acquired but have not been registered on the land title documents. Statutory easements have been created for all Aurora owned electricity infrastructure erected before 6 November 1996*.

It is very important to be aware that the owner and/or developer will be responsible for any charges which relate to the relocation of assets or to remove buildings or structures within the easement that have been built without prior approval by Aurora Energy.

*You should contact Aurora for distribution system easement details and Transend for transmission system easement details.



Avoid building too close to or blocking access to poles and powerlines

Is building within the clearance zones ever permitted?

If any construction is proposed to take place within the minimum safety clearance of the powerline, please contact Aurora for advice, as it may still be allowed under special circumstances. If your proposal is acceptable, we will clearly identify any conditions required for approval.

In some cases, it may be necessary to relocate the powerlines before construction begins to ensure that safety requirements are met. The cost of the relocation or alteration work, or any other costs involved, may be at the developer's cost.

Please call Aurora on **1300 13 7008** if you need advice on determining the requirements for your installation.

Contact details

Website:	www.auroraenergy.com.au
Building near powerlines advice:	1300 13 7008
Faults and emergencies:	13 2004
Postal address:	Aurora Energy GPO Box 191 Hobart 7001

