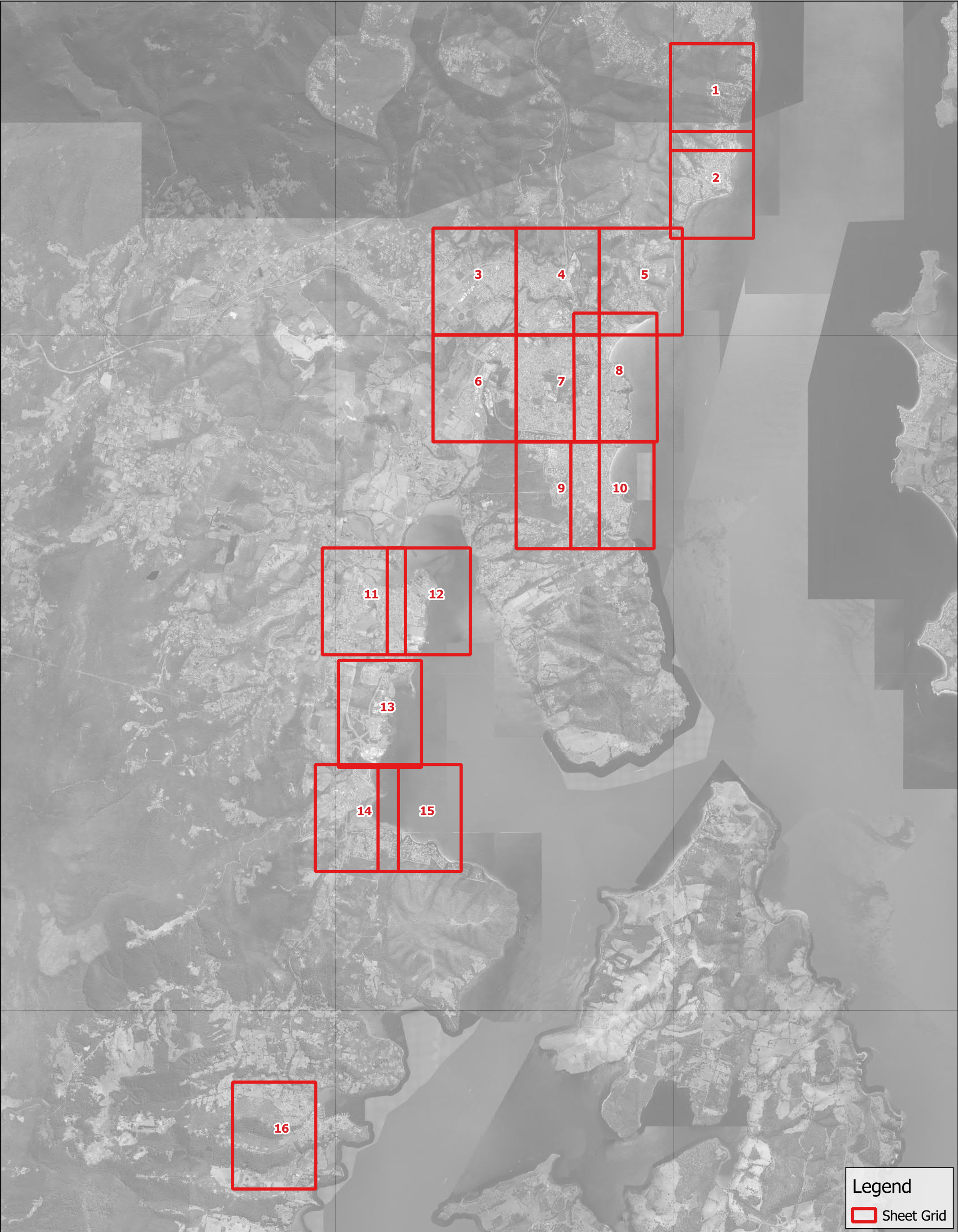


# APPENDIX A

## Pipe Capacity Assessment Maps

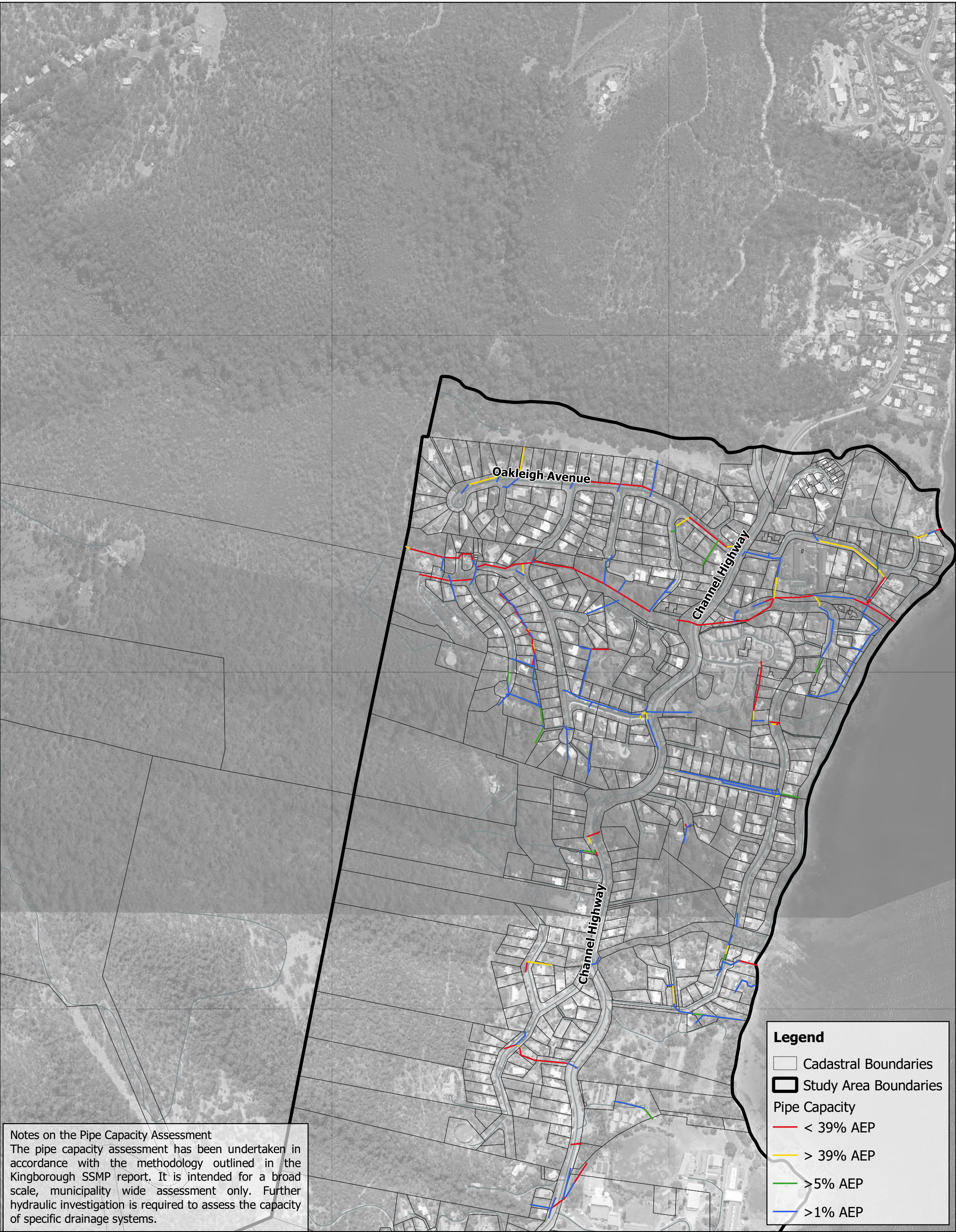




Legend

Sheet Grid





**Notes on the Pipe Capacity Assessment**  
The pipe capacity assessment has been undertaken in accordance with the methodology outlined in the Kingborough SSMP report. It is intended for a broad scale, municipality wide assessment only. Further hydraulic investigation is required to assess the capacity of specific drainage systems.

**Legend**

Cadastral Boundaries

Study Area Boundaries

**Pipe Capacity**

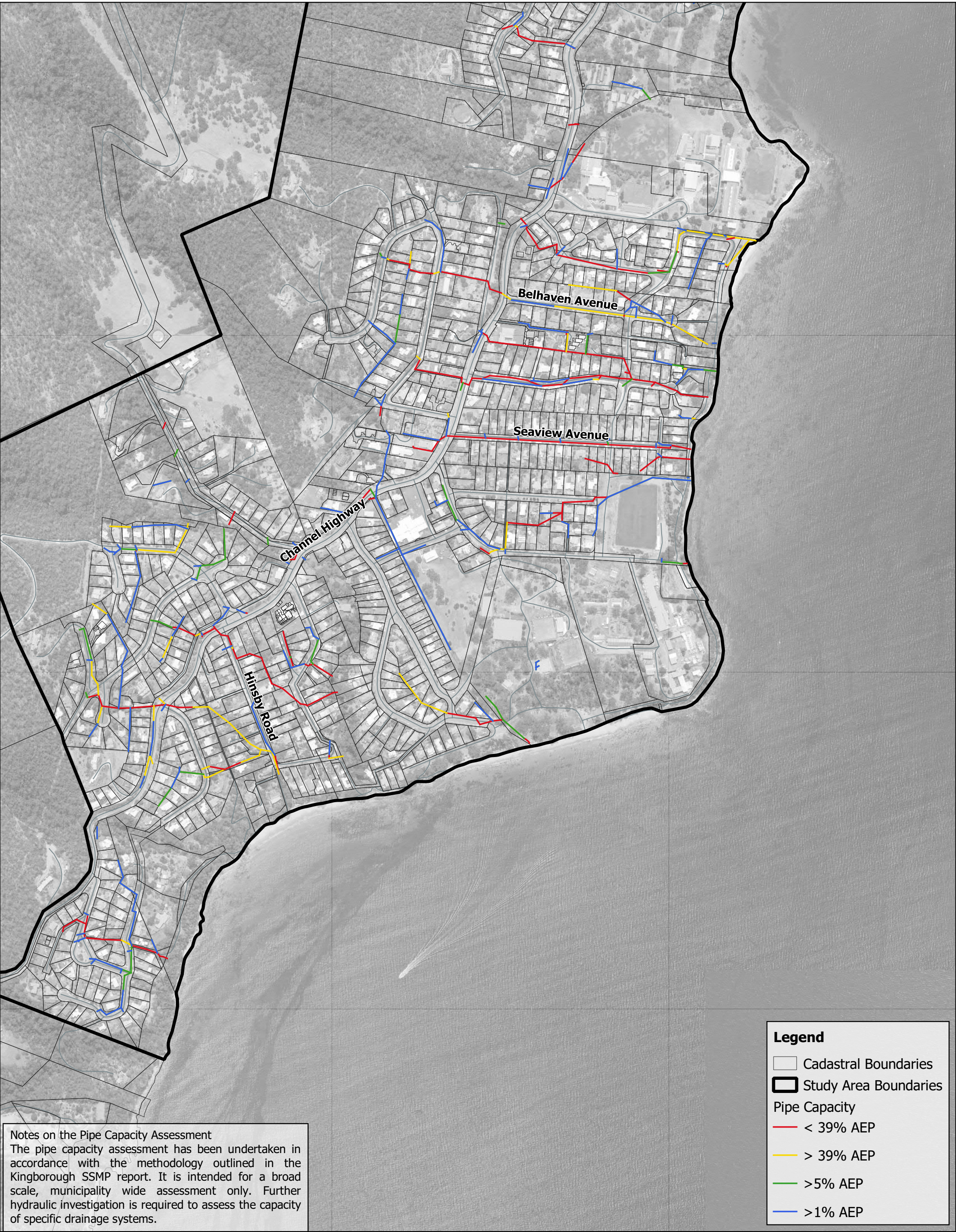
< 39% AEP

> 39% AEP

> 5% AEP

> 1% AEP





**Notes on the Pipe Capacity Assessment**  
The pipe capacity assessment has been undertaken in accordance with the methodology outlined in the Kingborough SSMP report. It is intended for a broad scale, municipality wide assessment only. Further hydraulic investigation is required to assess the capacity of specific drainage systems.

**Legend**

Cadastral Boundaries

Study Area Boundaries

Pipe Capacity

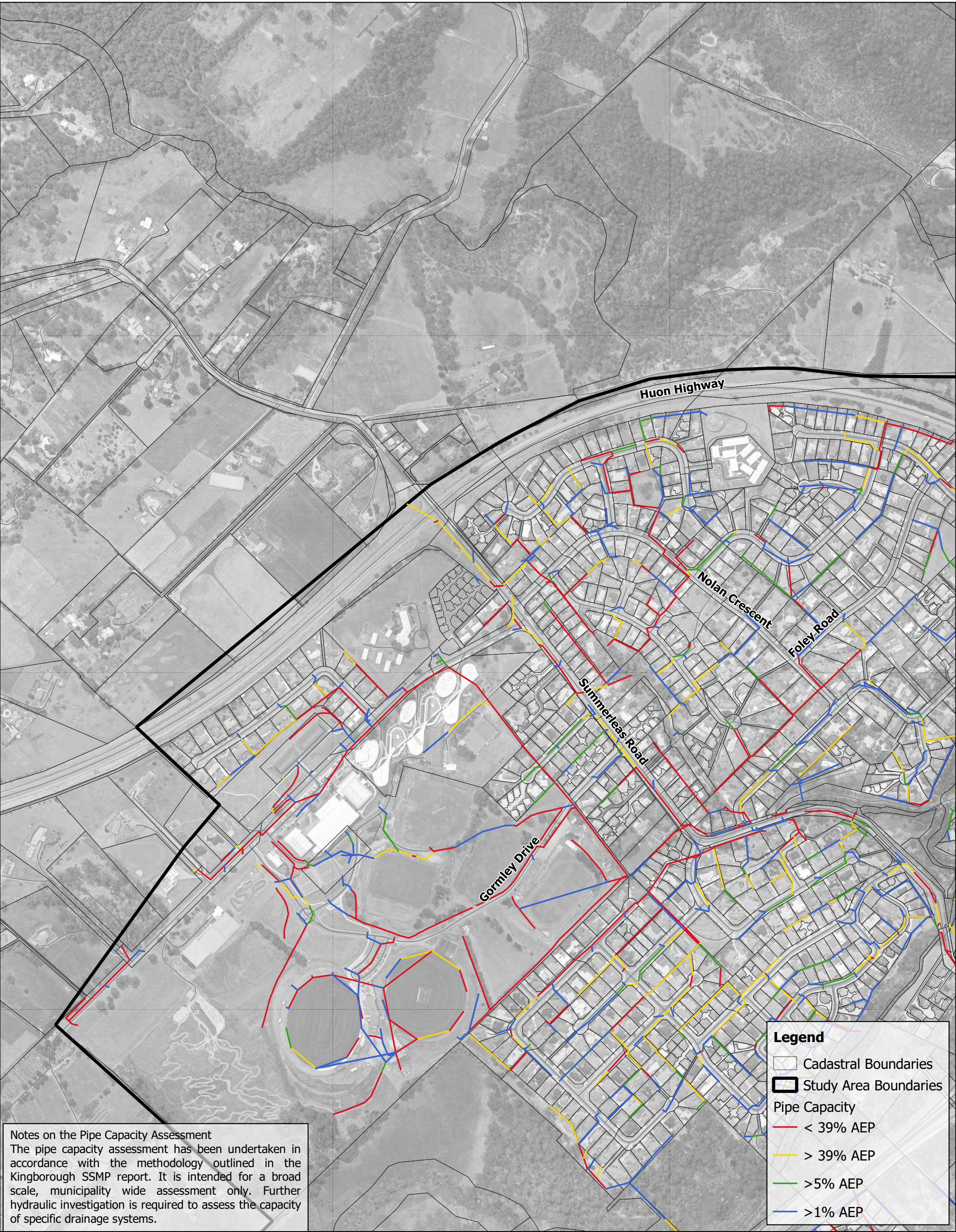
< 39% AEP

> 39% AEP

> 5% AEP

> 1% AEP

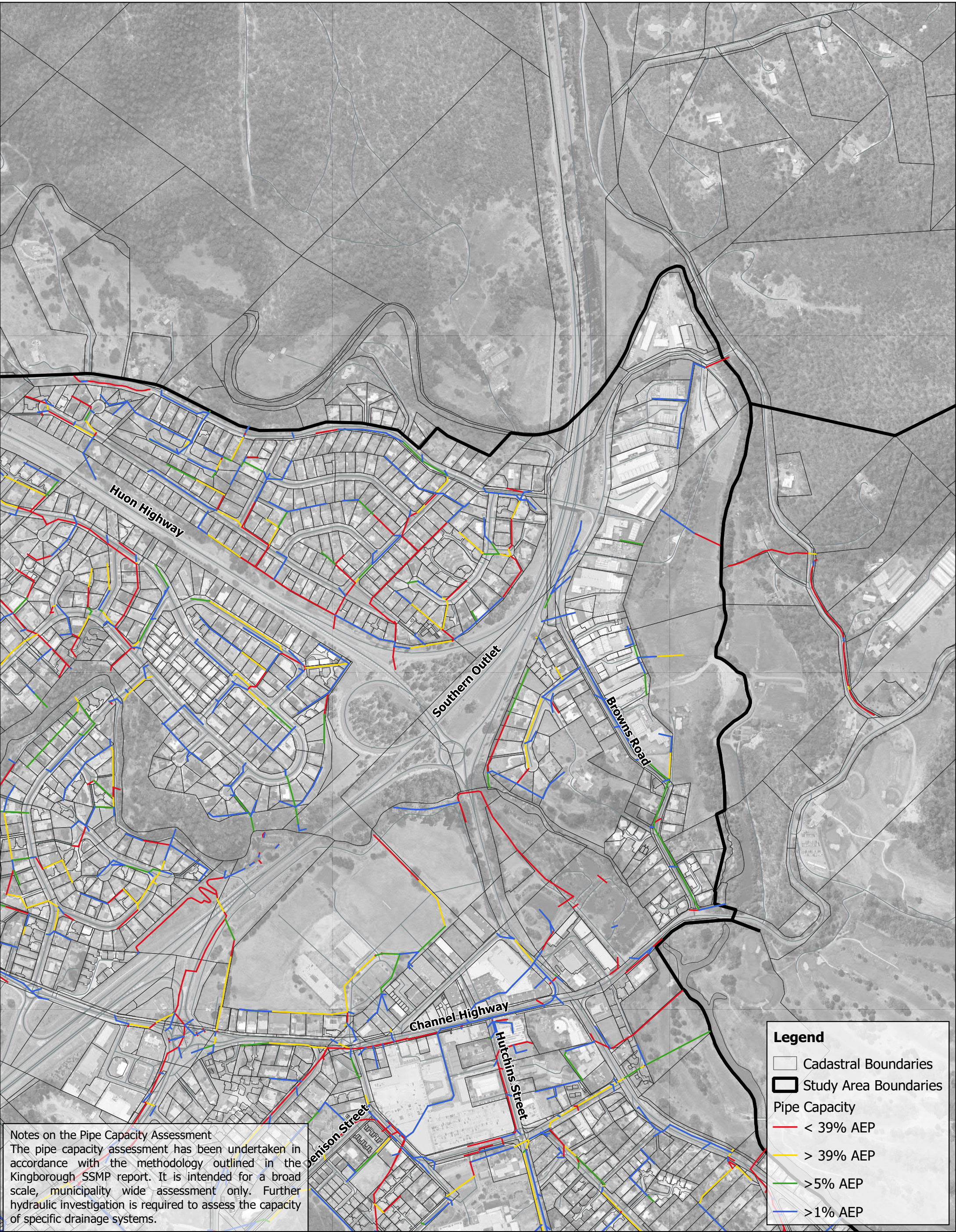




**Notes on the Pipe Capacity Assessment**  
The pipe capacity assessment has been undertaken in accordance with the methodology outlined in the Kingborough SSMP report. It is intended for a broad scale, municipality wide assessment only. Further hydraulic investigation is required to assess the capacity of specific drainage systems.

- Legend**
- Cadastral Boundaries
  - Study Area Boundaries
  - Pipe Capacity
    - < 39% AEP
    - > 39% AEP
    - > 5% AEP
    - > 1% AEP





Notes on the Pipe Capacity Assessment  
The pipe capacity assessment has been undertaken in accordance with the methodology outlined in the Kingborough SSMP report. It is intended for a broad scale, municipality wide assessment only. Further hydraulic investigation is required to assess the capacity of specific drainage systems.

Legend

Cadastral Boundaries

Study Area Boundaries

Pipe Capacity

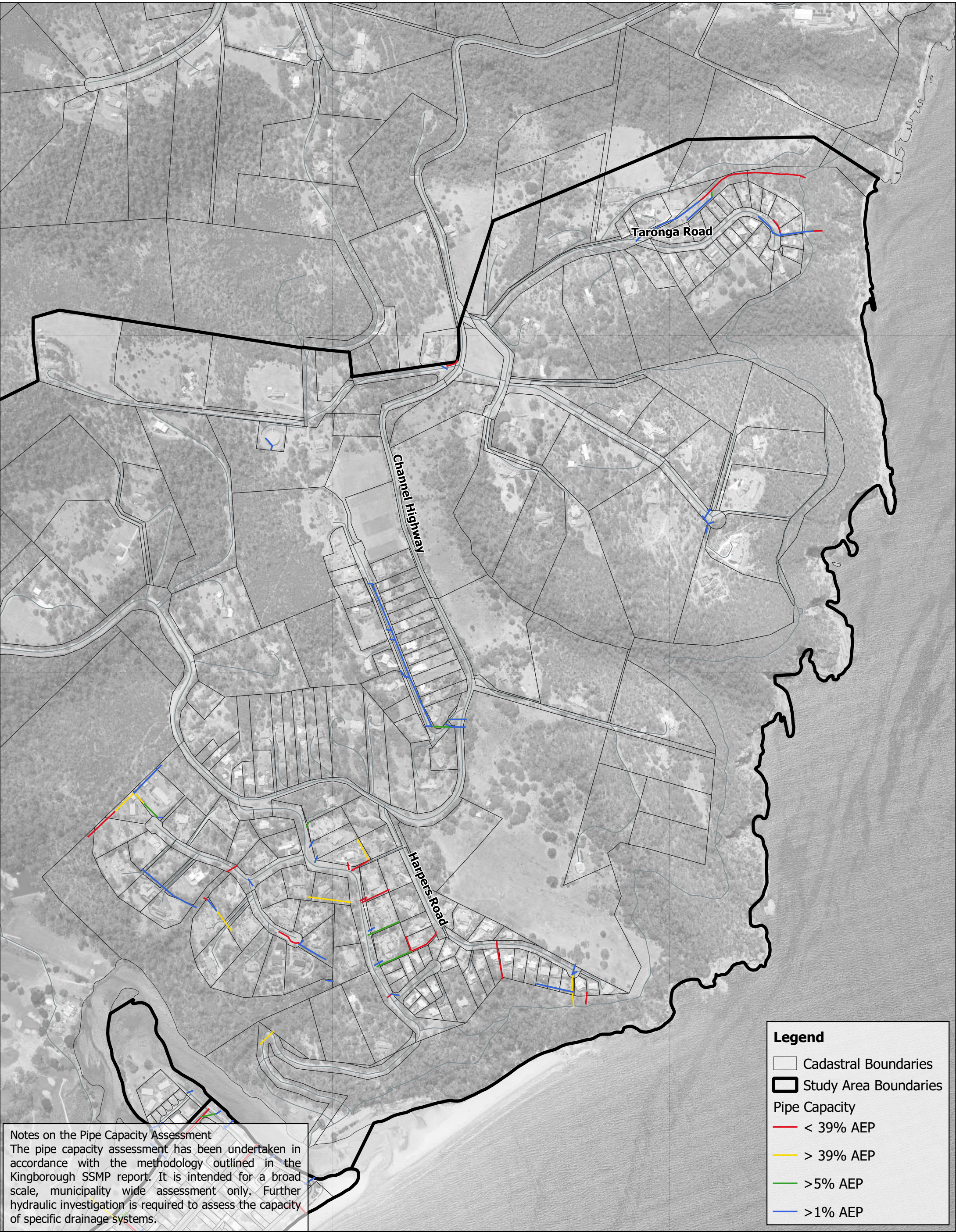
< 39% AEP

> 39% AEP

> 5% AEP


> 1% AEP







**Notes on the Pipe Capacity Assessment**  
The pipe capacity assessment has been undertaken in accordance with the methodology outlined in the Kingborough SSMP report. It is intended for a broad scale, municipality wide assessment only. Further hydraulic investigation is required to assess the capacity of specific drainage systems.

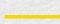
**Legend**


 Cadastral Boundaries

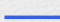
 Study Area Boundaries

**Pipe Capacity**

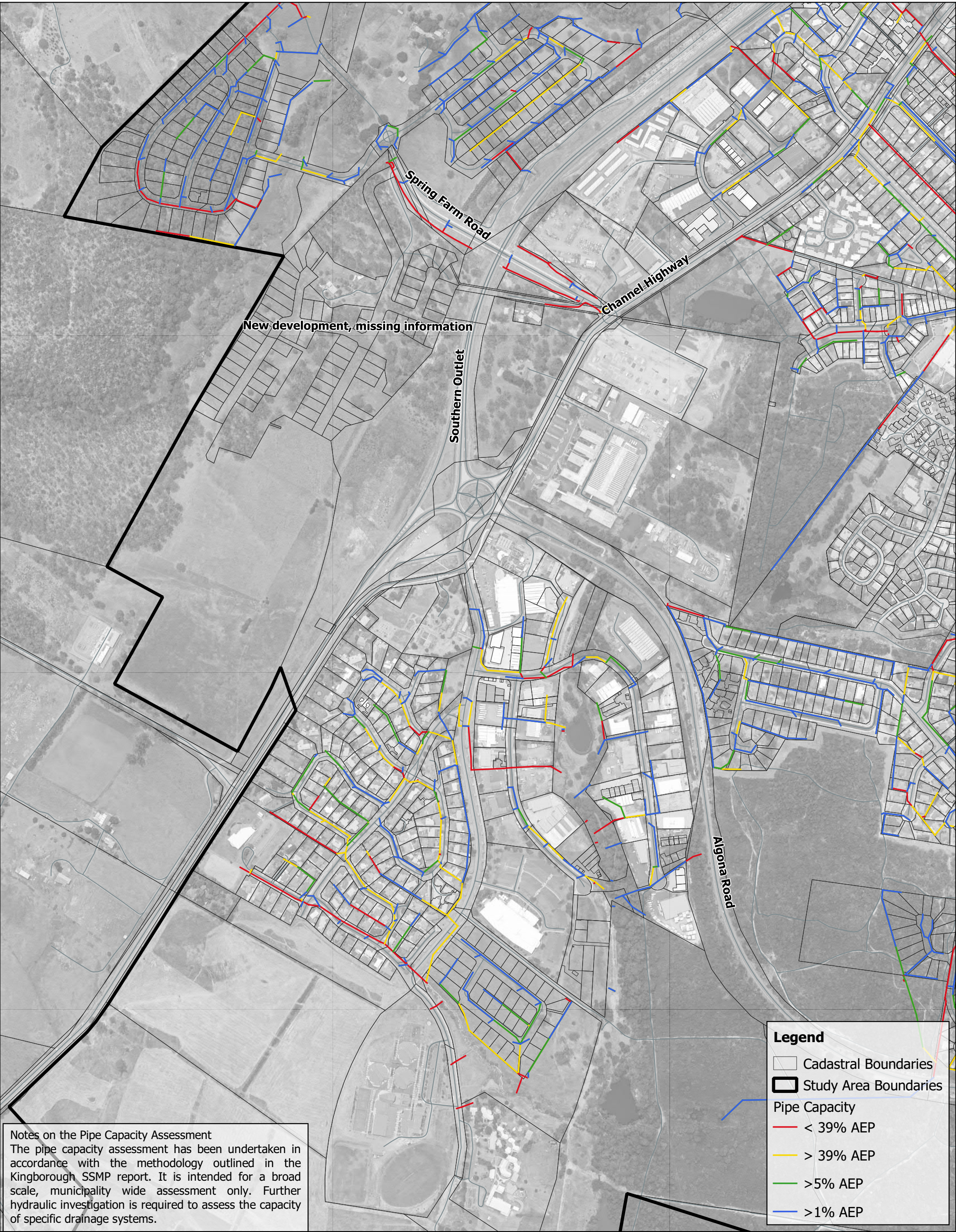
 < 39% AEP

 > 39% AEP

 > 5% AEP

 > 1% AEP





**Notes on the Pipe Capacity Assessment**  
The pipe capacity assessment has been undertaken in accordance with the methodology outlined in the Kingborough SSMP report. It is intended for a broad scale, municipality wide assessment only. Further hydraulic investigation is required to assess the capacity of specific drainage systems.

- Legend**
- Cadastral Boundaries
  - Study Area Boundaries
  - Pipe Capacity
    - < 39% AEP
    - > 39% AEP
    - > 5% AEP
    - > 1% AEP





Notes on the Pipe Capacity Assessment  
The pipe capacity assessment has been undertaken in accordance with the methodology outlined in the Kingborough SSMP report. It is intended for a broad scale, municipality wide assessment only. Further hydraulic investigation is required to assess the capacity of specific drainage systems.

- Legend**
- Cadastral Boundaries
  - Study Area Boundaries
  - Pipe Capacity
    - < 39% AEP
    - > 39% AEP
    - > 5% AEP
    - > 1% AEP



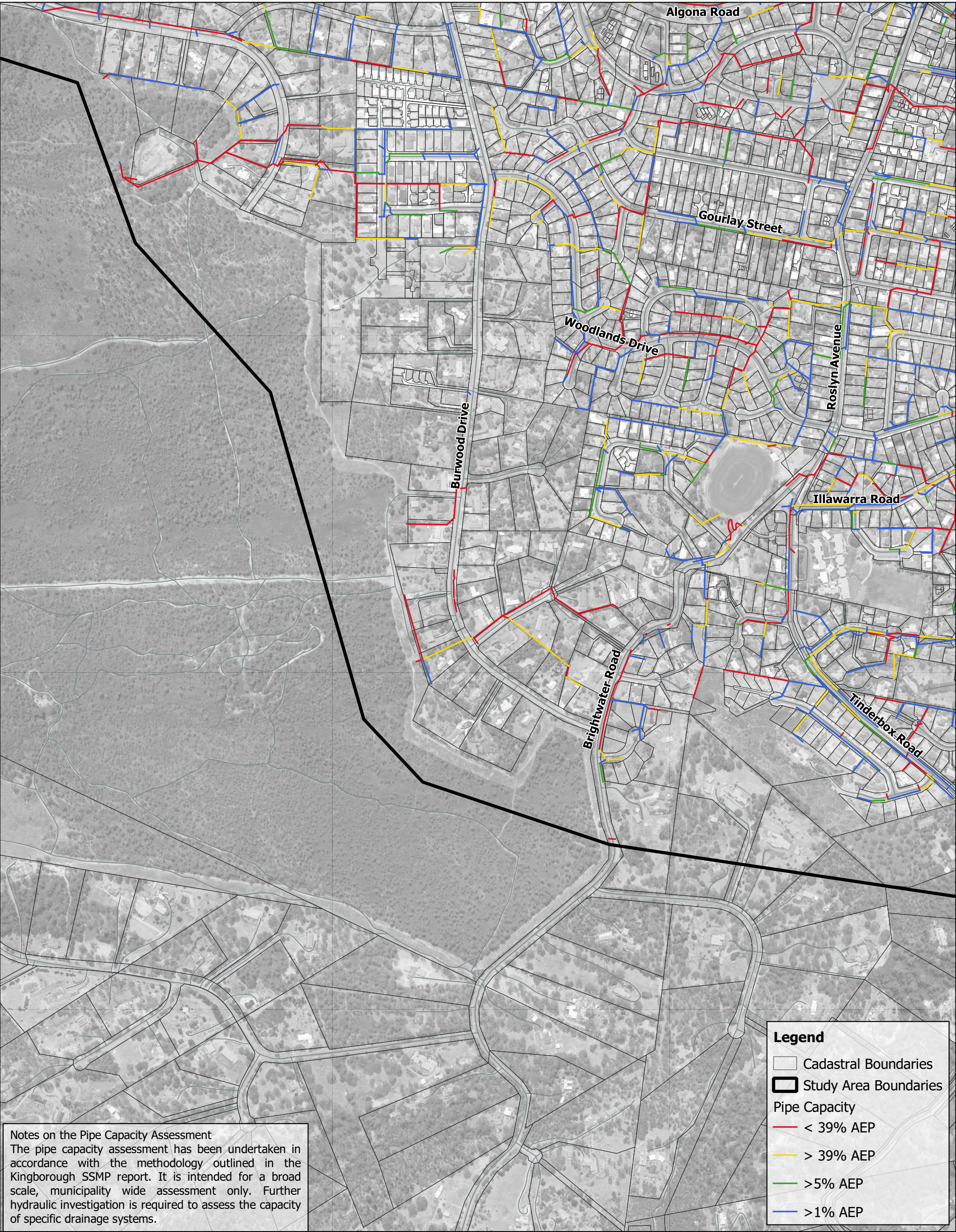


Notes on the Pipe Capacity Assessment  
The pipe capacity assessment has been undertaken in accordance with the methodology outlined in the Kingborough SSMP report. It is intended for a broad scale, municipality wide assessment only. Further hydraulic investigation is required to assess the capacity of specific drainage systems.

**Legend**

- Cadastral Boundaries
- Study Area Boundaries
- Pipe Capacity**
  - < 39% AEP
  - > 39% AEP
  - > 5% AEP
  - > 1% AEP

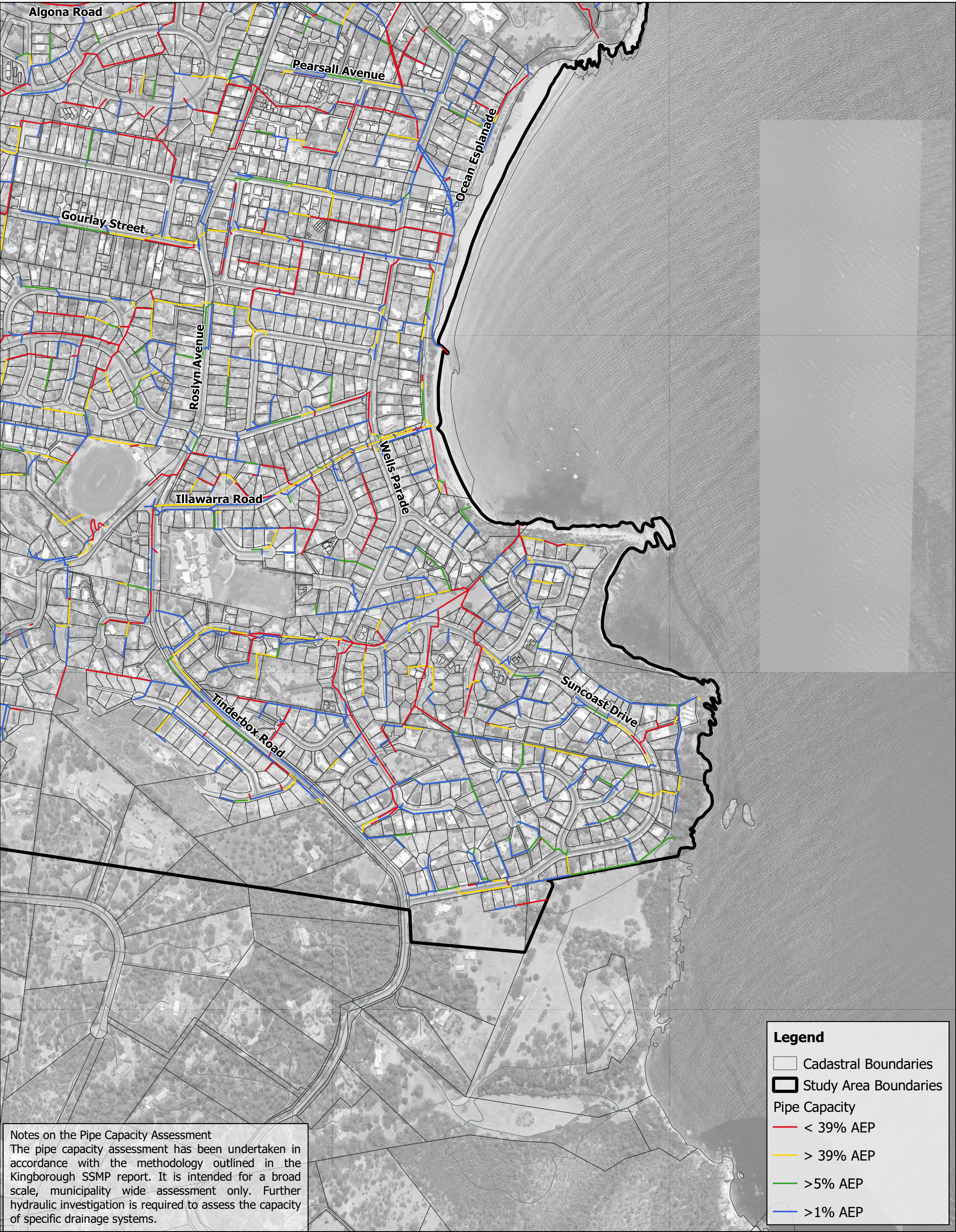




**Notes on the Pipe Capacity Assessment**  
The pipe capacity assessment has been undertaken in accordance with the methodology outlined in the Kingborough SSMP report. It is intended for a broad scale, municipality wide assessment only. Further hydraulic investigation is required to assess the capacity of specific drainage systems.

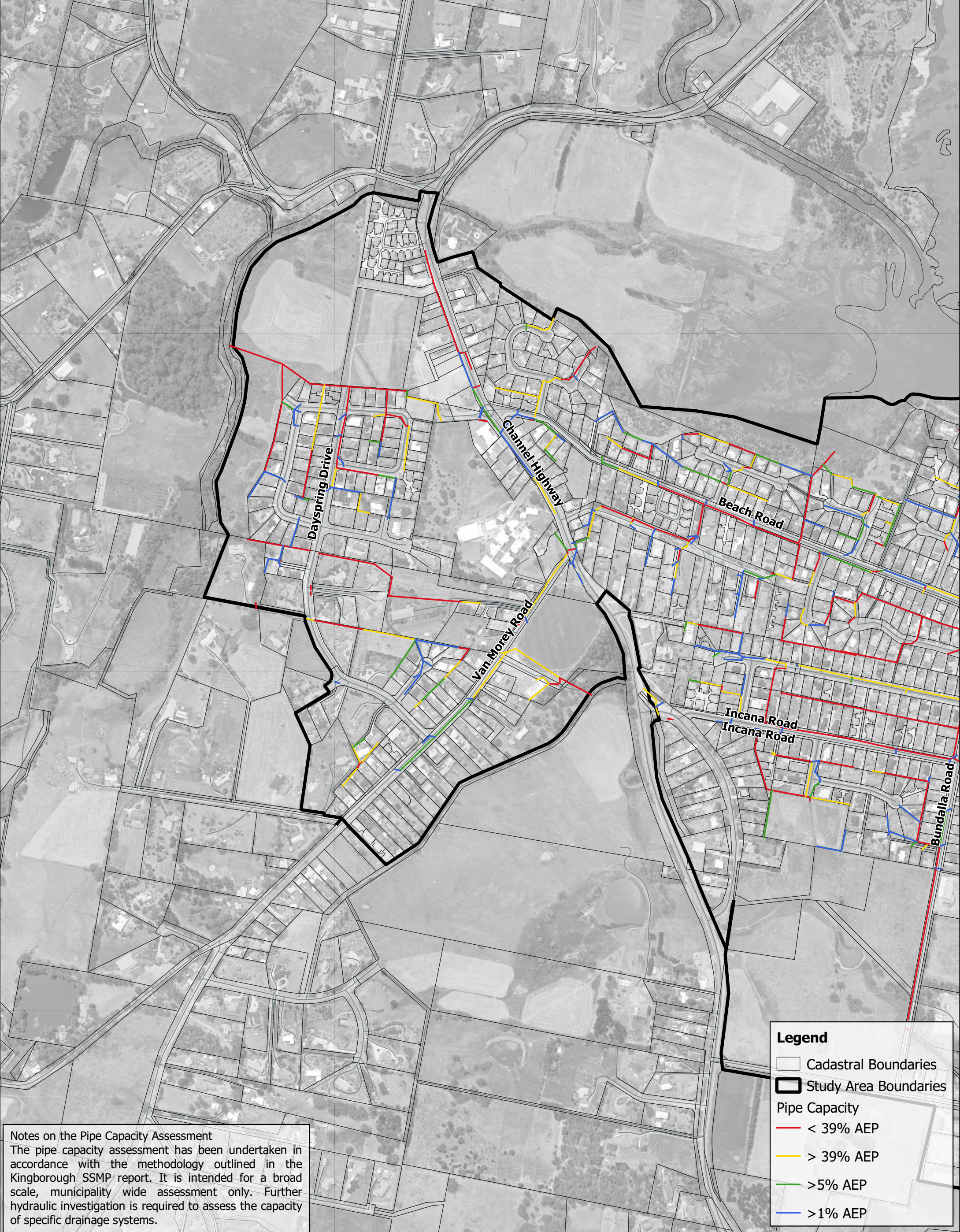
- Legend**
- Cadastral Boundaries
  - Study Area Boundaries
  - Pipe Capacity
    - < 39% AEP
    - > 39% AEP
    - > 5% AEP
    - > 1% AEP





**Notes on the Pipe Capacity Assessment**  
The pipe capacity assessment has been undertaken in accordance with the methodology outlined in the Kingborough SSMP report. It is intended for a broad scale, municipality wide assessment only. Further hydraulic investigation is required to assess the capacity of specific drainage systems.





**Notes on the Pipe Capacity Assessment**  
The pipe capacity assessment has been undertaken in accordance with the methodology outlined in the Kingborough SSMP report. It is intended for a broad scale, municipality wide assessment only. Further hydraulic investigation is required to assess the capacity of specific drainage systems.

**Legend**

Cadastral Boundaries

Study Area Boundaries

Pipe Capacity

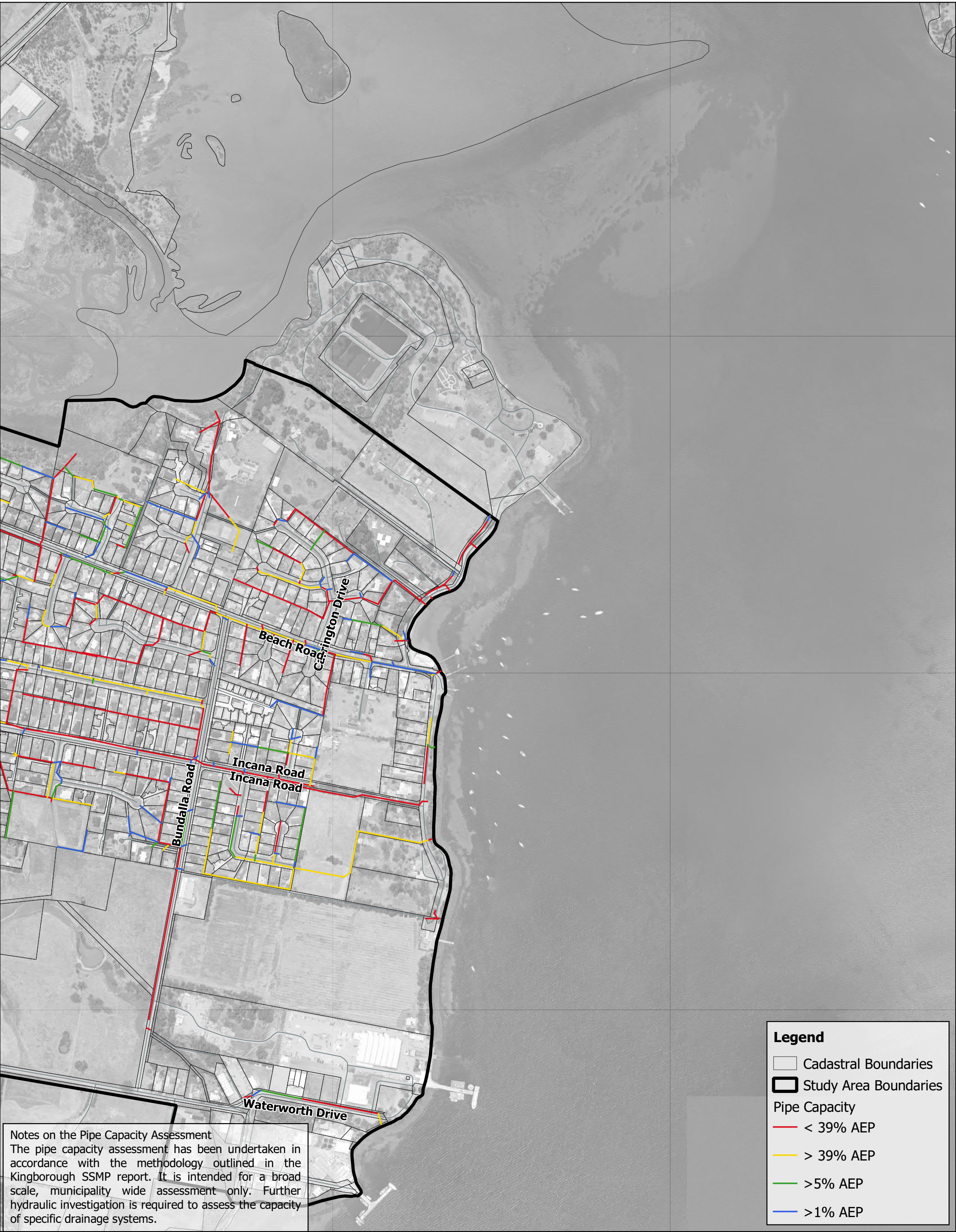
< 39% AEP

> 39% AEP

> 5% AEP

> 1% AEP





Notes on the Pipe Capacity Assessment  
The pipe capacity assessment has been undertaken in accordance with the methodology outlined in the Kingborough SSMP report. It is intended for a broad scale, municipality wide assessment only. Further hydraulic investigation is required to assess the capacity of specific drainage systems.

**Legend**

Cadastral Boundaries

Study Area Boundaries

Pipe Capacity

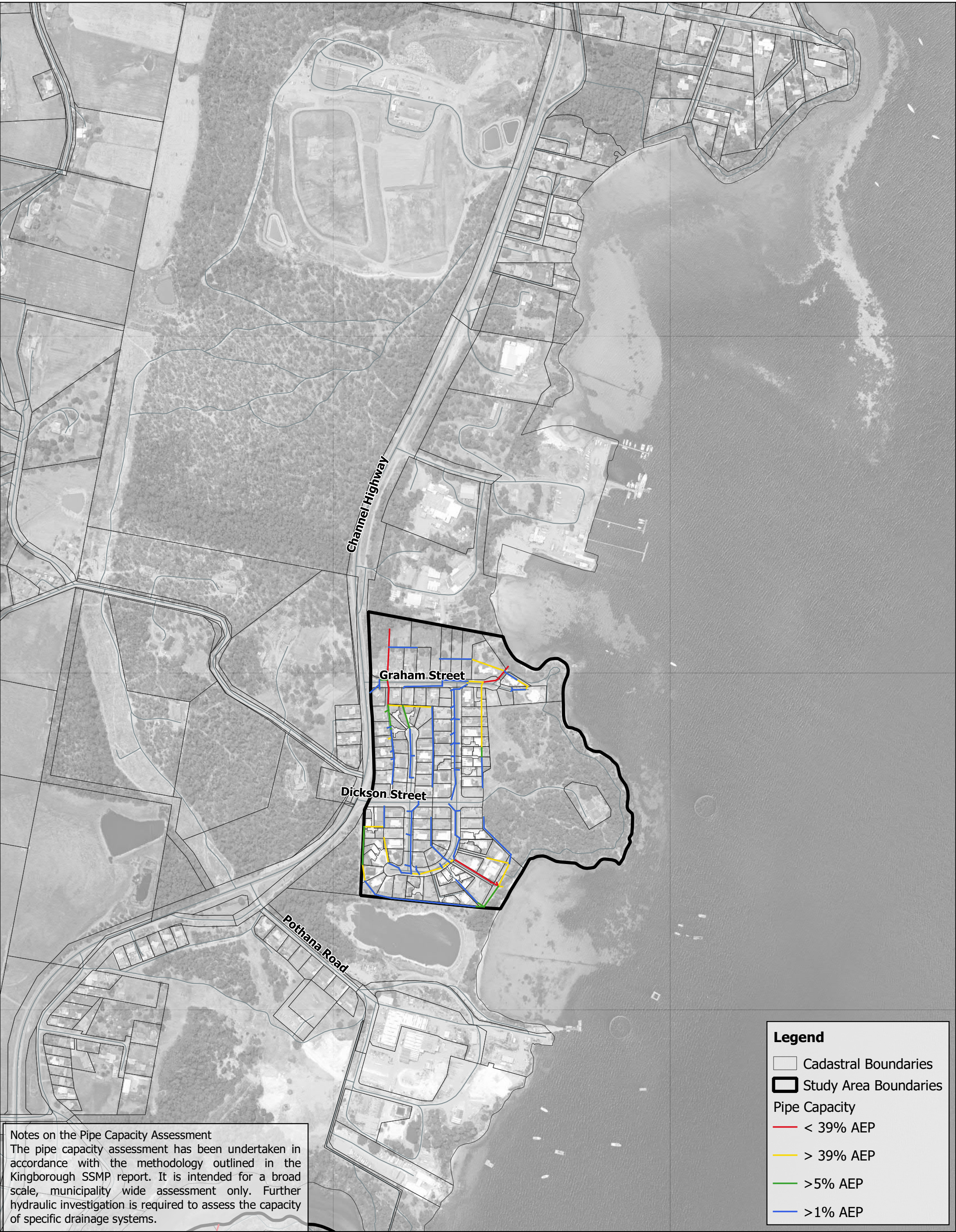
< 39% AEP

> 39% AEP

> 5% AEP

> 1% AEP





**Notes on the Pipe Capacity Assessment**  
The pipe capacity assessment has been undertaken in accordance with the methodology outlined in the Kingborough SSMP report. It is intended for a broad scale, municipality wide assessment only. Further hydraulic investigation is required to assess the capacity of specific drainage systems.

**Legend**

Cadastral Boundaries

Study Area Boundaries

Pipe Capacity

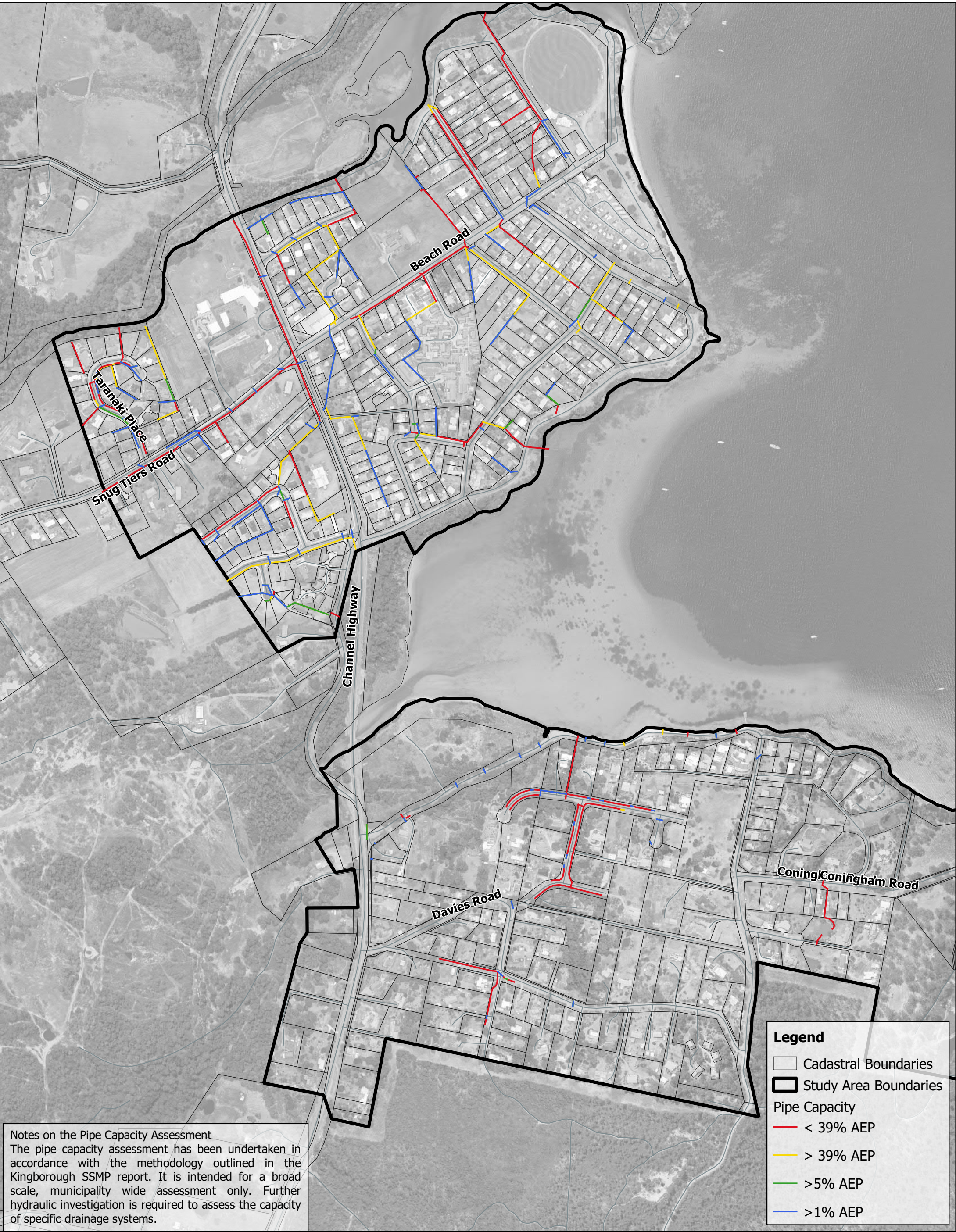
< 39% AEP

> 39% AEP

> 5% AEP


> 1% AEP







**Notes on the Pipe Capacity Assessment**  
The pipe capacity assessment has been undertaken in accordance with the methodology outlined in the Kingborough SSMP report. It is intended for a broad scale, municipality wide assessment only. Further hydraulic investigation is required to assess the capacity of specific drainage systems.


**Legend**


 Cadastral Boundaries


 Study Area Boundaries

**Pipe Capacity**

 < 39% AEP

 > 39% AEP

 > 5% AEP

 > 1% AEP





**Notes on the Pipe Capacity Assessment**  
The pipe capacity assessment has been undertaken in accordance with the methodology outlined in the Kingborough SSMP report. It is intended for a broad scale, municipality wide assessment only. Further hydraulic investigation is required to assess the capacity of specific drainage systems.

**Legend**

Cadastral Boundaries

Study Area Boundaries

**Pipe Capacity**

< 39% AEP

> 39% AEP

> 5% AEP

> 1% AEP



