

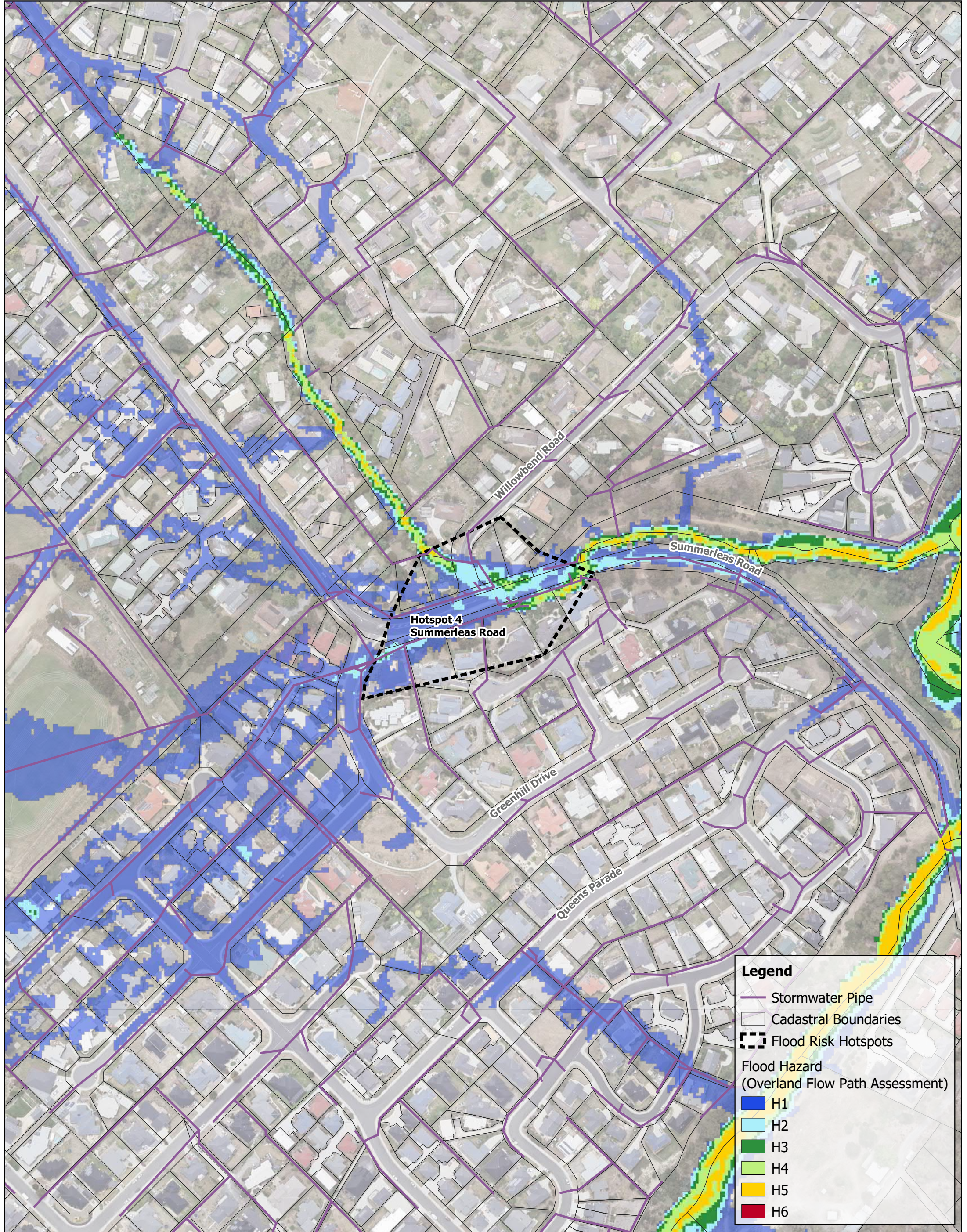
# **APPENDIX C**

## **Flood Risk Hotspots**









**Legend**

Stormwater Pipe

Cadastral Boundaries

Flood Risk Hotspots

**Flood Hazard  
(Overland Flow Path Assessment)**

H1

H2

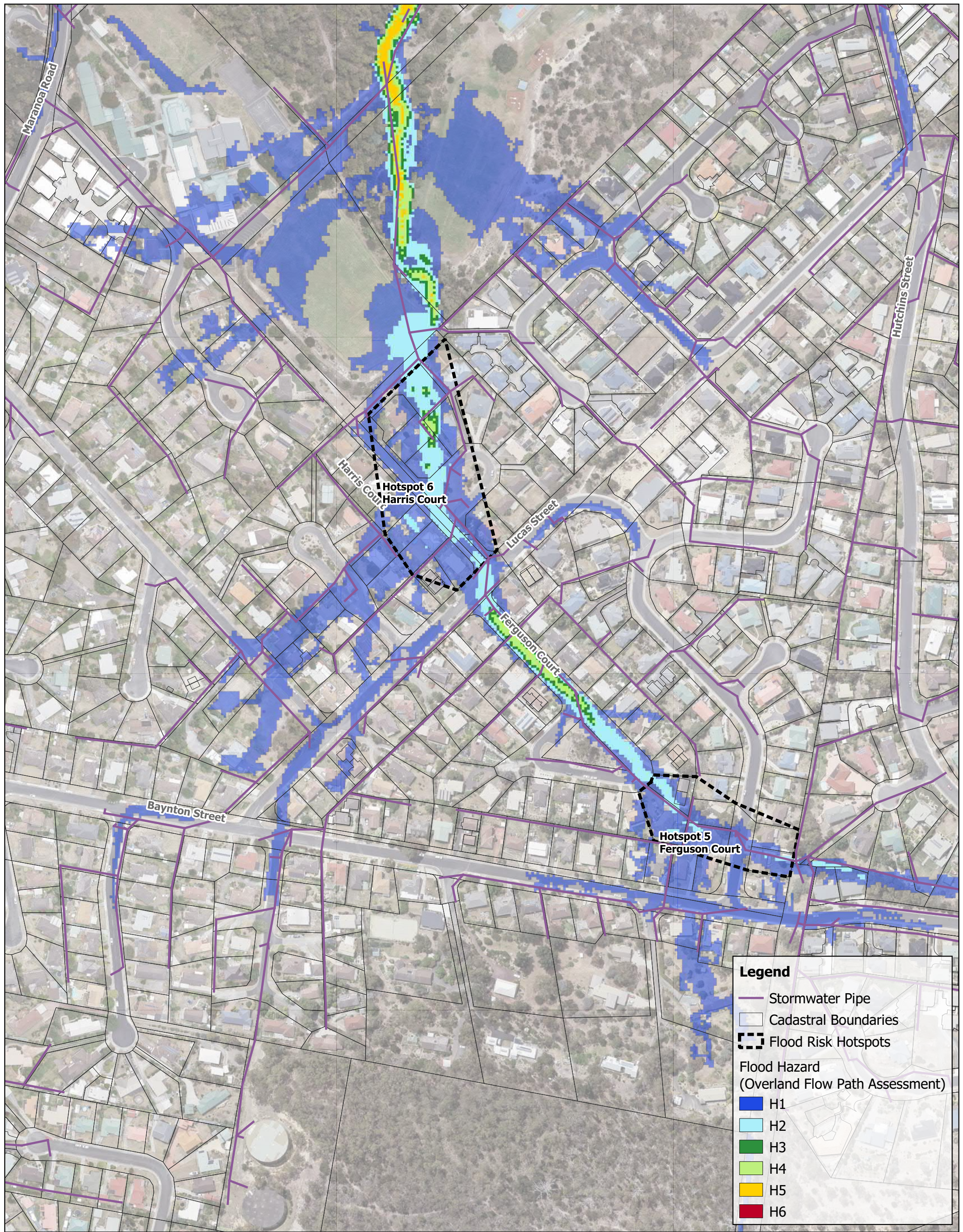
H3

H4

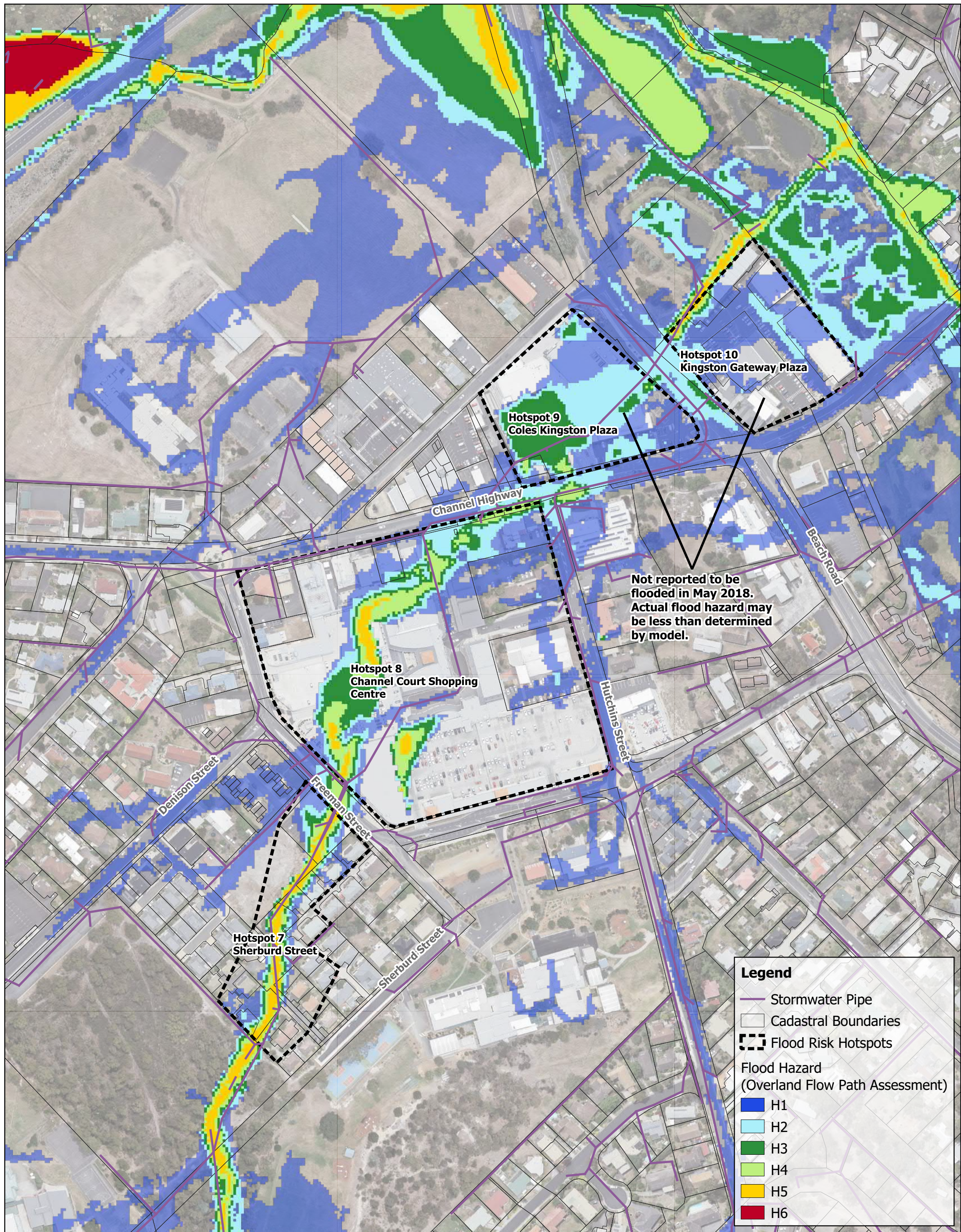
H5

H6

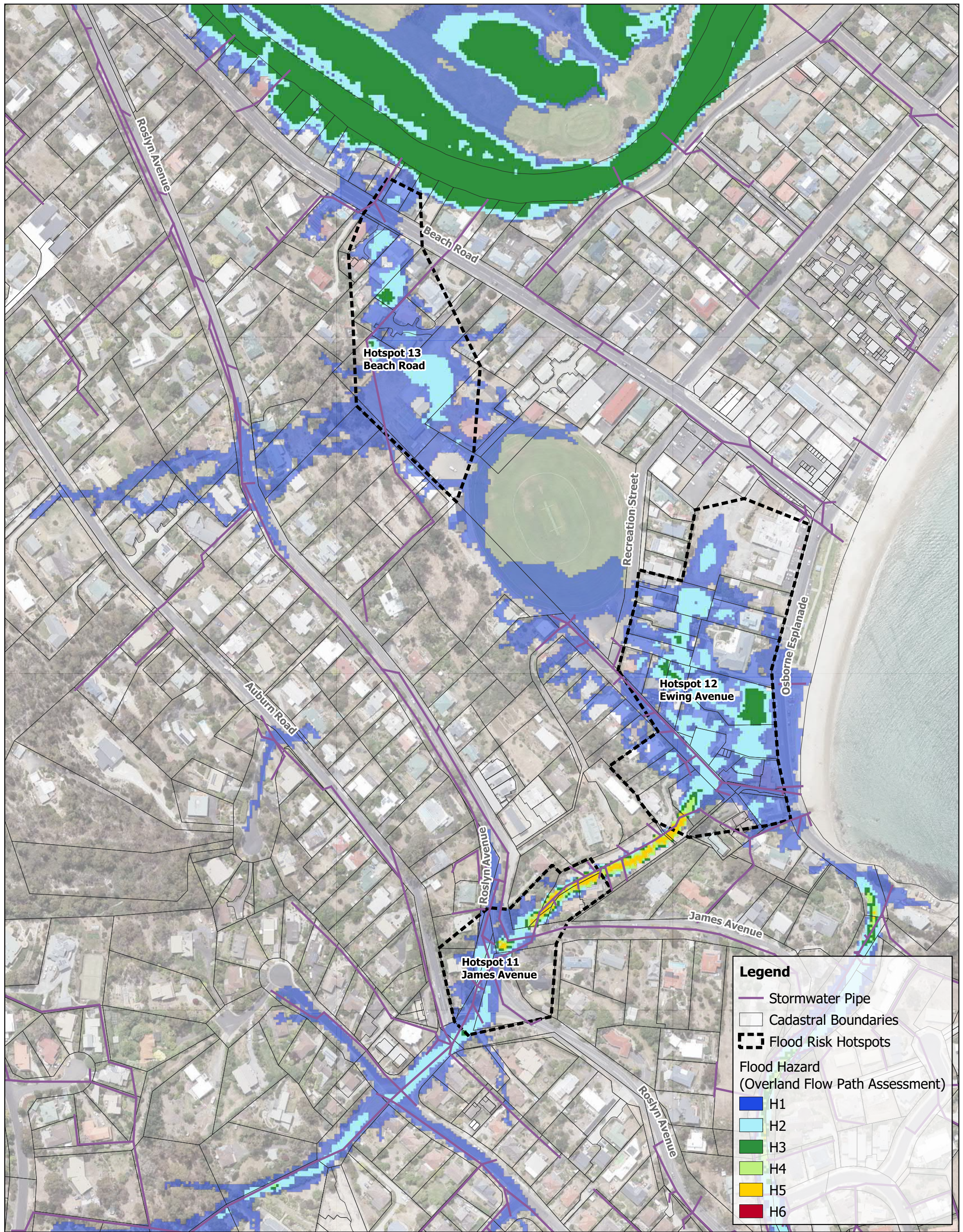




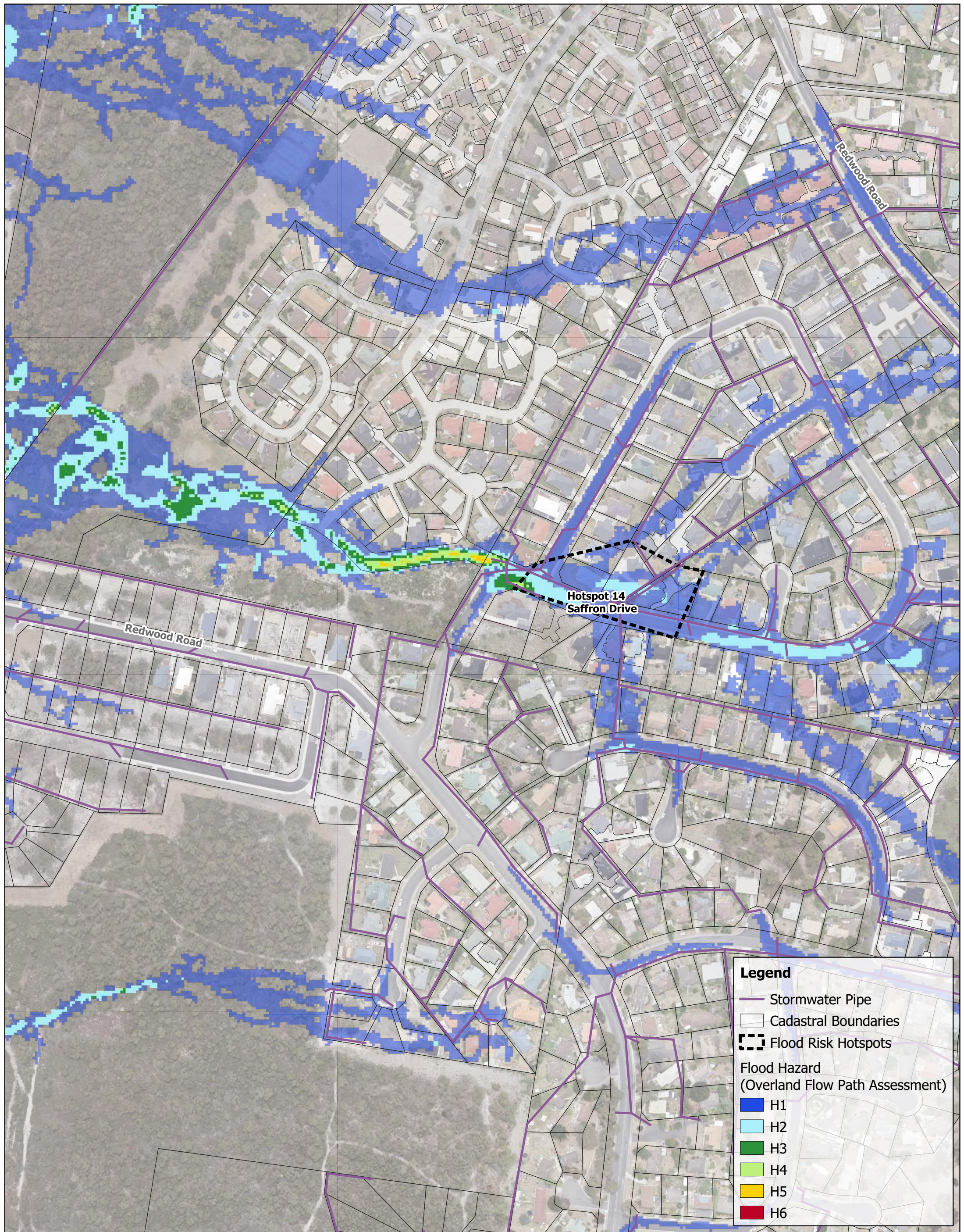












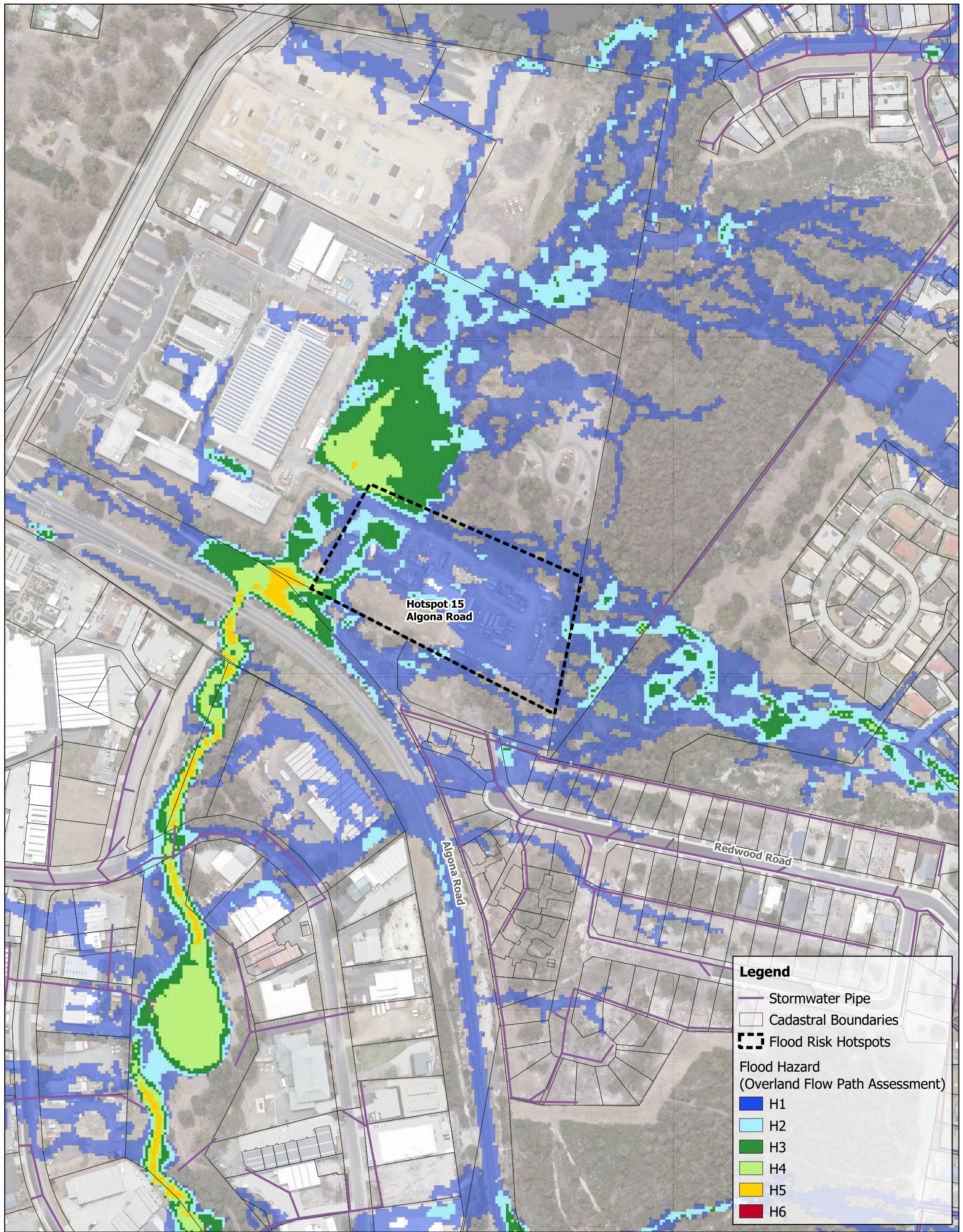
**Legend**

- Stormwater Pipe
- Cadastral Boundaries
- Flood Risk Hotspots

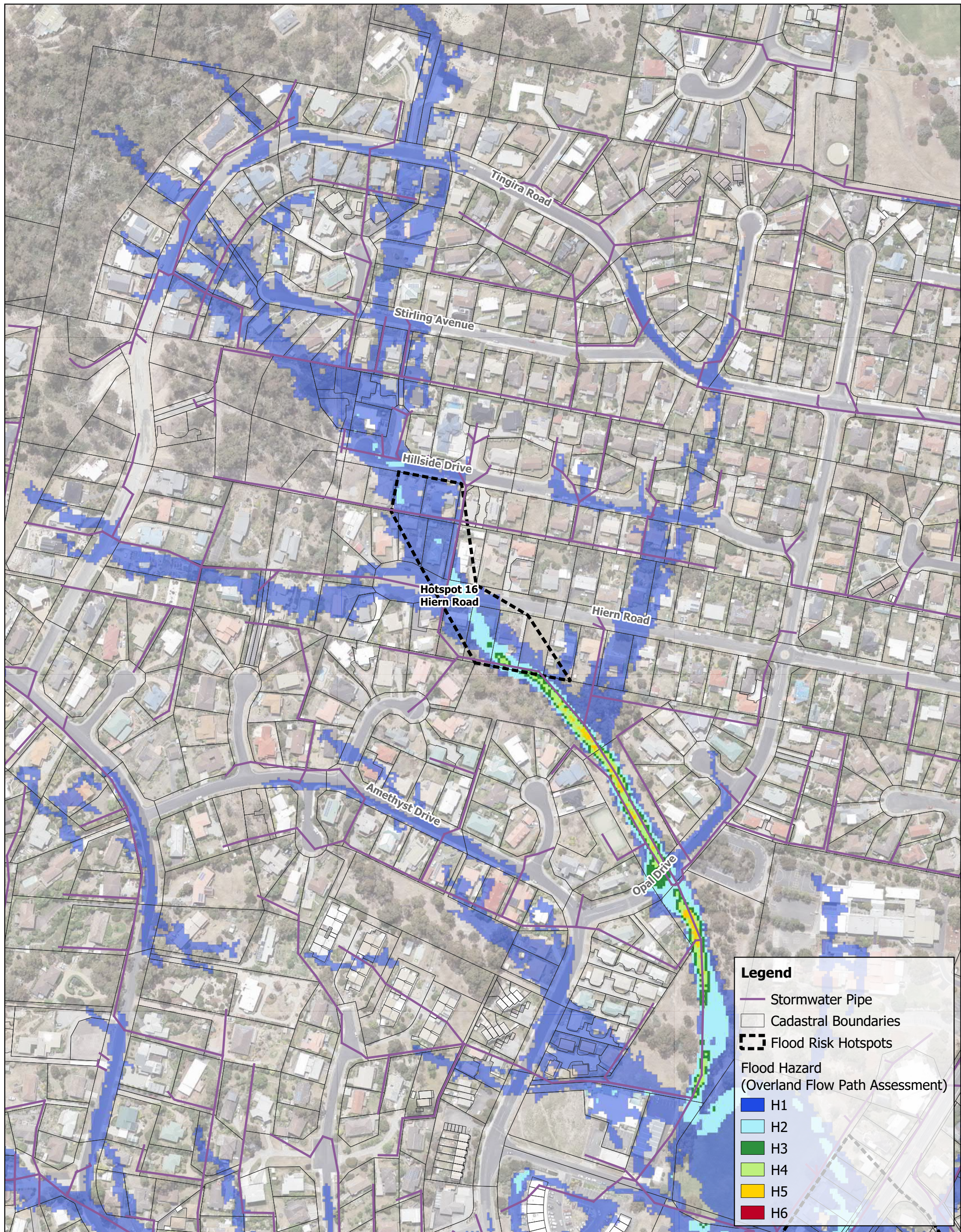
**Flood Hazard  
(Overland Flow Path Assessment)**

- H1
- H2
- H3
- H4
- H5
- H6









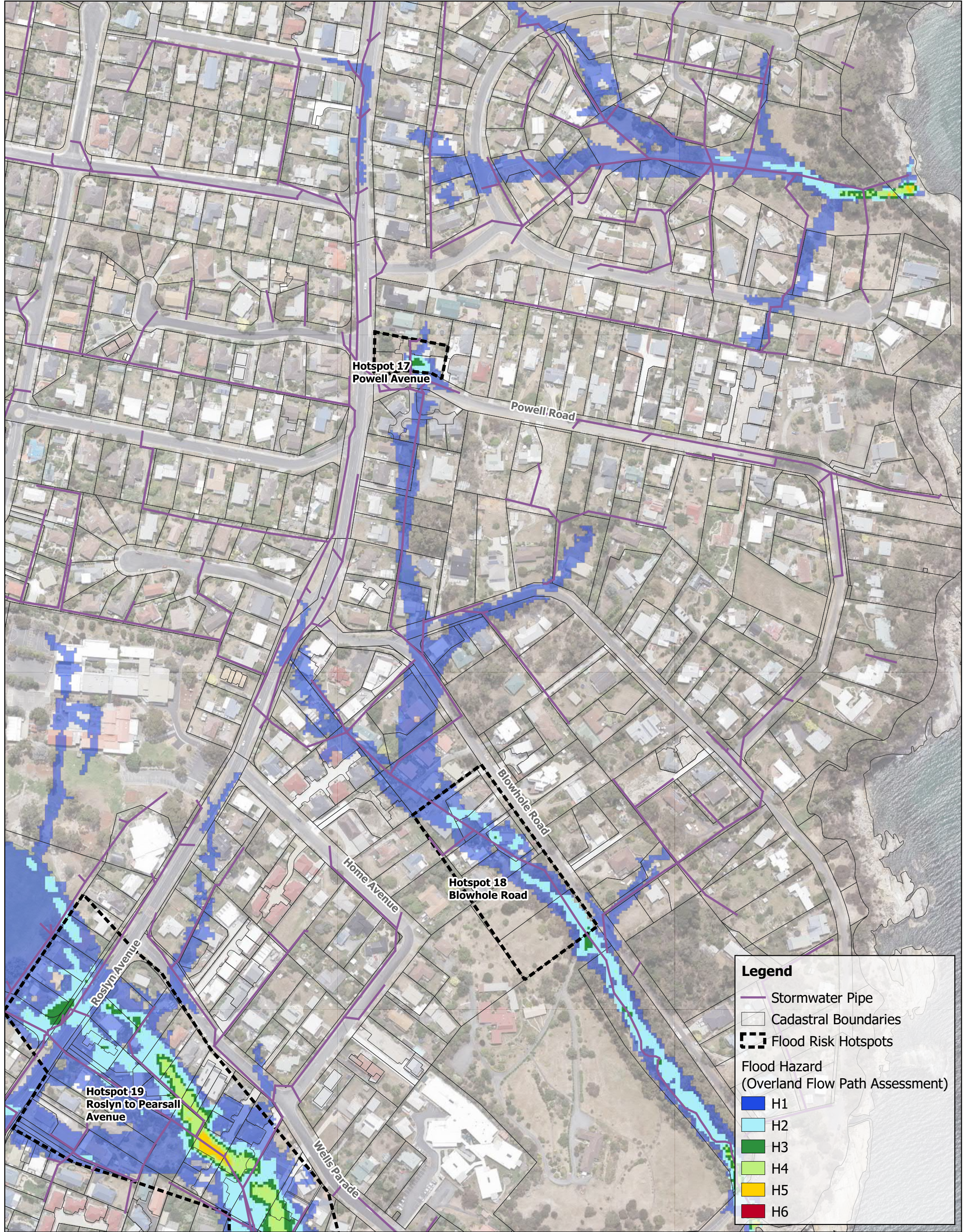
**Legend**

- Stormwater Pipe
- Cadastral Boundaries
- Flood Risk Hotspots

**Flood Hazard  
(Overland Flow Path Assessment)**

- H1
- H2
- H3
- H4
- H5
- H6





**Legend**

Stormwater Pipe

Cadastral Boundaries

Flood Risk Hotspots

**Flood Hazard  
(Overland Flow Path Assessment)**

H1

H2

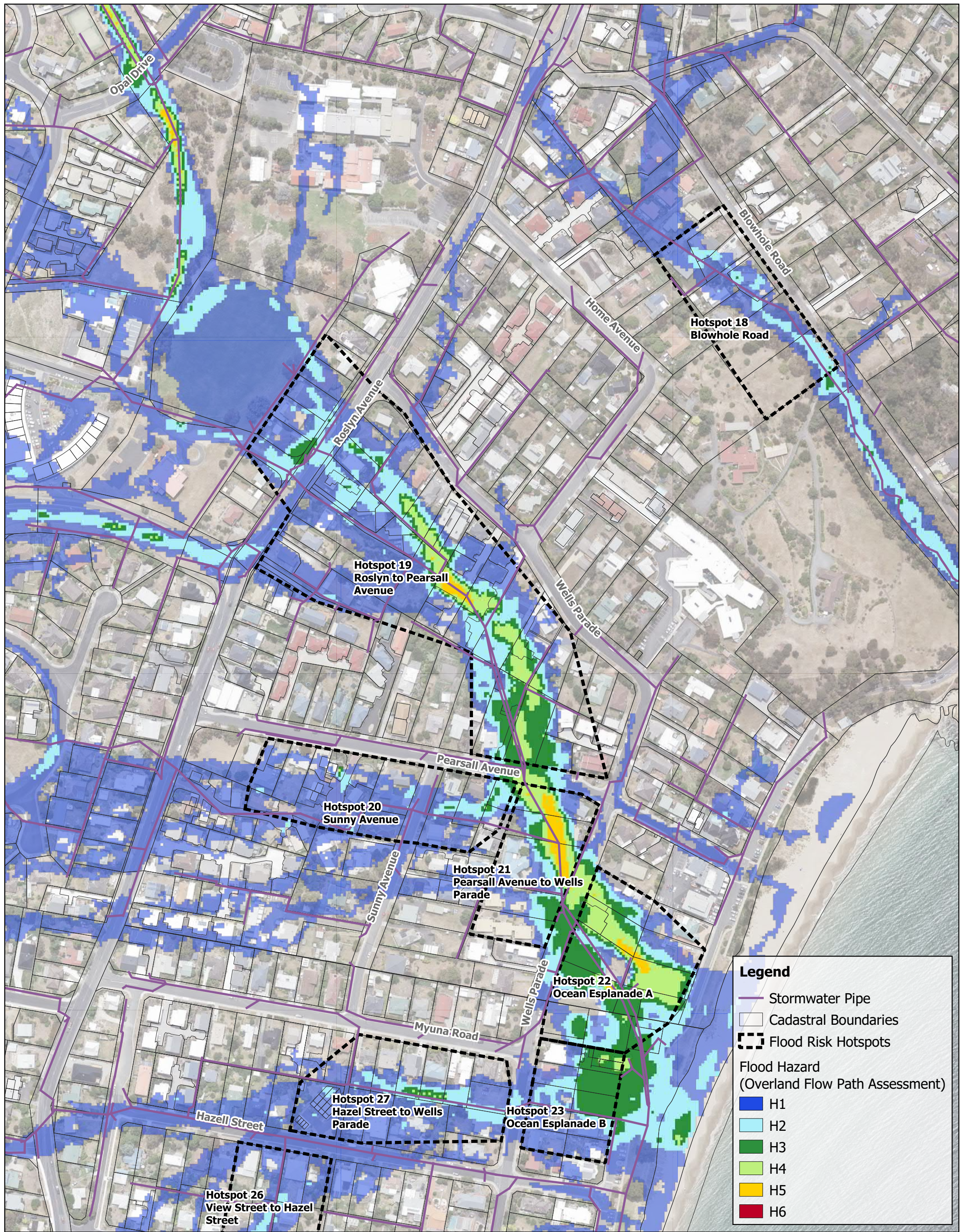
H3

H4

H5

H6





### Legend

- Stormwater Pipe
- Cadastral Boundaries
- Flood Risk Hotspots

### Flood Hazard (Overland Flow Path Assessment)

- H1
- H2
- H3
- H4
- H5
- H6

Level 7, 500 Queen Street, Brisbane  
PO Box 10183 Brisbane QLD 4000

www.engeny.com.au

P: 07 3221 7174  
F: 07 3236 2399

E: admin@engeny.com.au



0 25 50 75 100 m

Scale in metres ( 1:2500 @ A3)

Map Projection: Transverse Mercator  
Horizontal Datum: Australia Geodetic Datum  
Vertical Datum: Australia Geodetic Datum  
Grid: Australian Map Grid, Zone 56

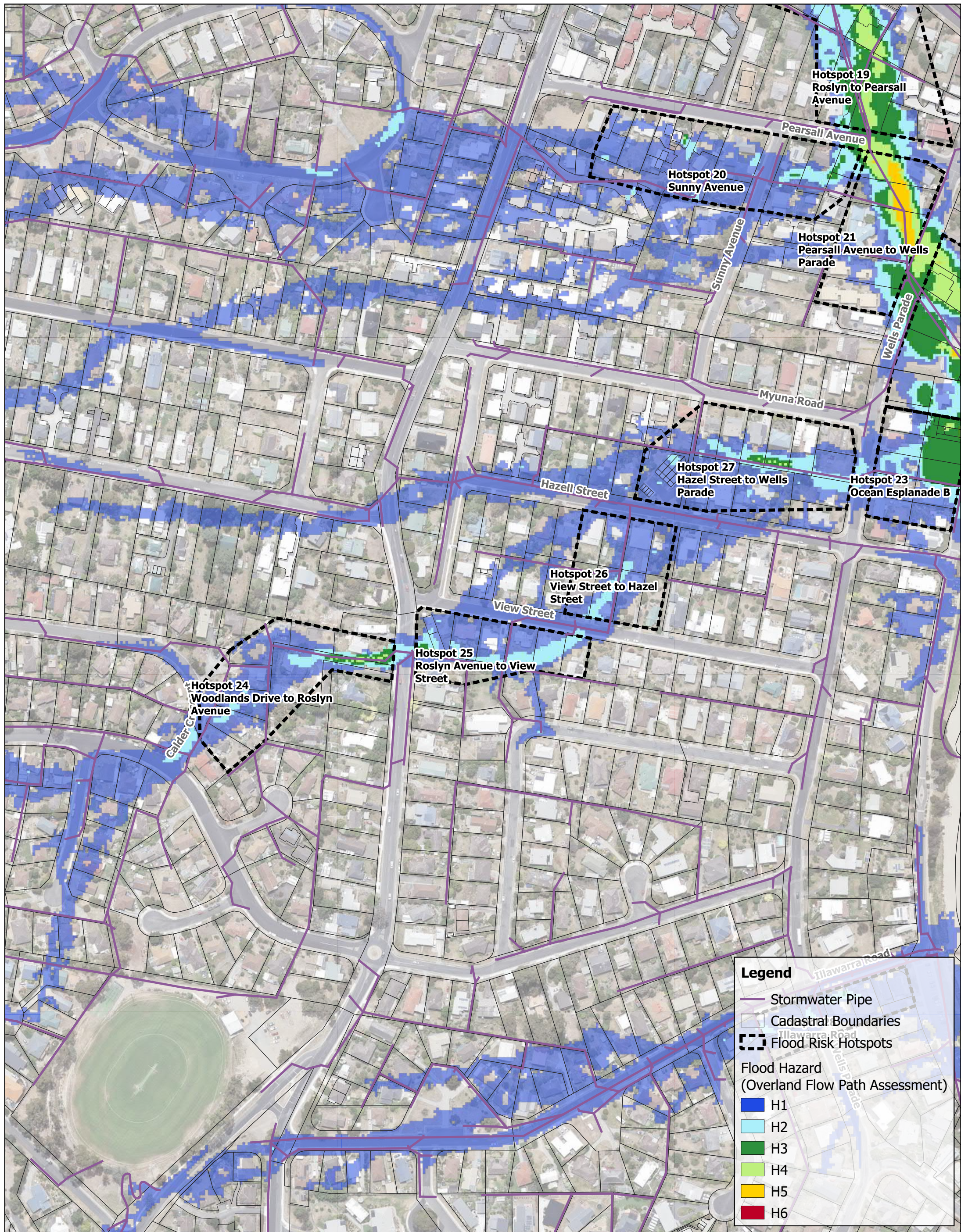
Kingborough Council  
Stormwater System Management Plan

Flood Risk Hotspots  
Sheet 10 of 15

Engeny does not give any  
warranty nor accept any  
liability in relation to the  
completeness or accuracy  
of the maps, which may be  
inherently reliant upon the  
completeness and accuracy  
of the input data and the  
agreed scope of works.

Job Number:  
M91000\_001  
Revision: 1  
Drawn: GH  
Checked: MP  
Date: 10/3/2020





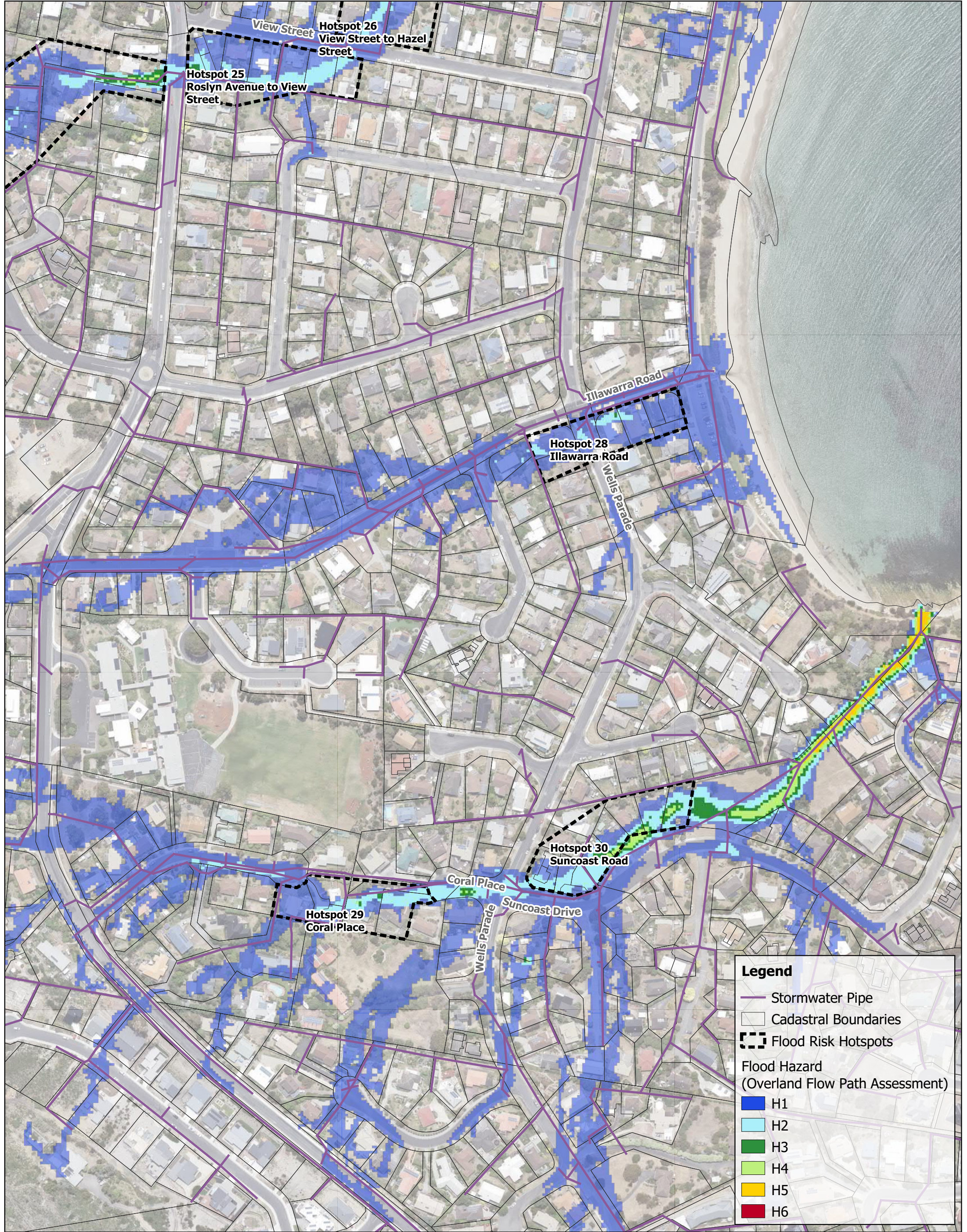
**Legend**

- Stormwater Pipe
- Cadastral Boundaries
- Flood Risk Hotspots

Flood Hazard  
(Overland Flow Path Assessment)

- H1
- H2
- H3
- H4
- H5
- H6





**Legend**

- Stormwater Pipe
- Cadastral Boundaries
- Flood Risk Hotspots

**Flood Hazard  
(Overland Flow Path Assessment)**

- H1
- H2
- H3
- H4
- H5
- H6





**Legend**

- Stormwater Pipe
- Cadastral Boundaries
- Flood Risk Hotspots

**Flood Hazard  
(Overland Flow Path Assessment)**

- H1
- H2
- H3
- H4
- H5
- H6









**Legend**

- Stormwater Pipe
- Cadastral Boundaries
- Flood Risk Hotspots

**Flood Hazard  
(Overland Flow Path Assessment)**

- H1
- H2
- H3
- H4
- H5
- H6