





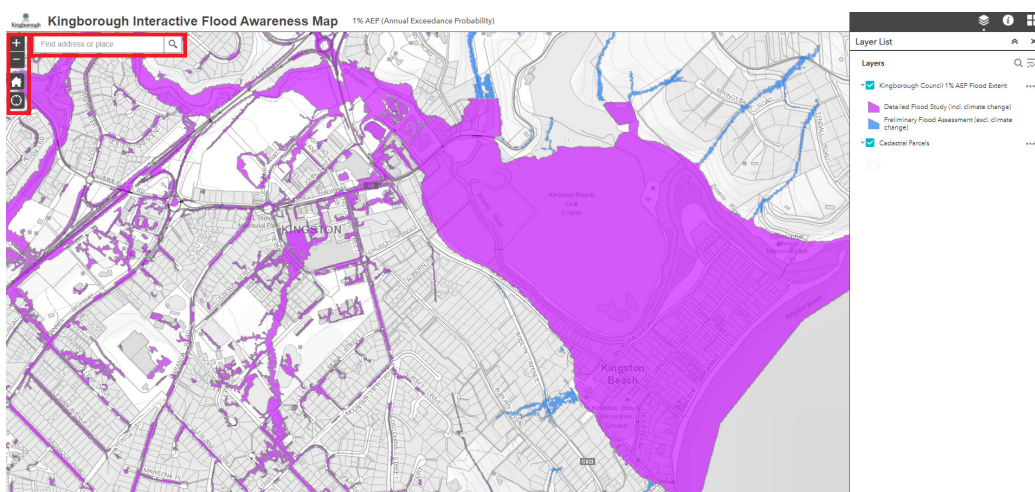
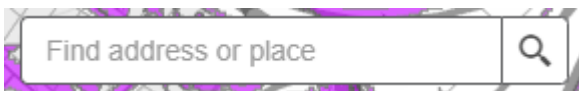
Navigating Kingborough Interactive Flood Awareness Map

The below instruction provides a step-by-step guide on how to navigate the [Kingborough Interactive Flood Awareness Map](#).

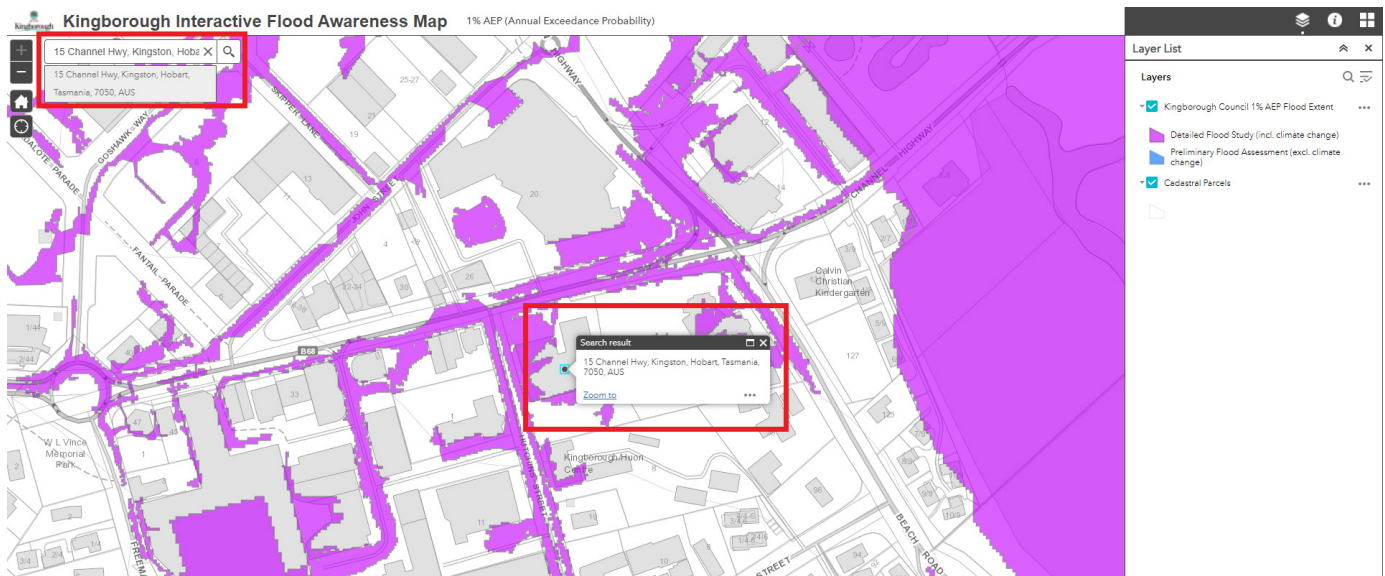
The map can be navigated by clicking, dragging or scrolling on the map itself, or by using the following buttons on the top left of the screen:

-  to zoom in
-  to zoom out
-  to return to default extent
-  to navigate your device location

Alternatively, you can type an address into the search field at the top left of the screen to find a specific address:

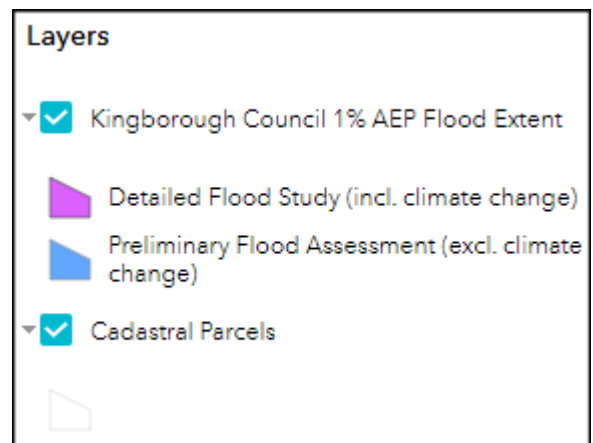


If you have searched for an address, a pop-up window appears with a black dot on the centre of the property on the map screen.



Purple areas shown on the map are detailed flood studies that have been modelled for the 1% AEP storm event and includes climate change considerations.

The detailed modelled flood areas are mainly within the urban footprint and include Kingston, Kingston Beach, Blackmans Bay, Snug and Adventure Bay.



Blue areas shown on the map are preliminary mapping of overland flow paths across Kingborough for the 1% AEP storm event.

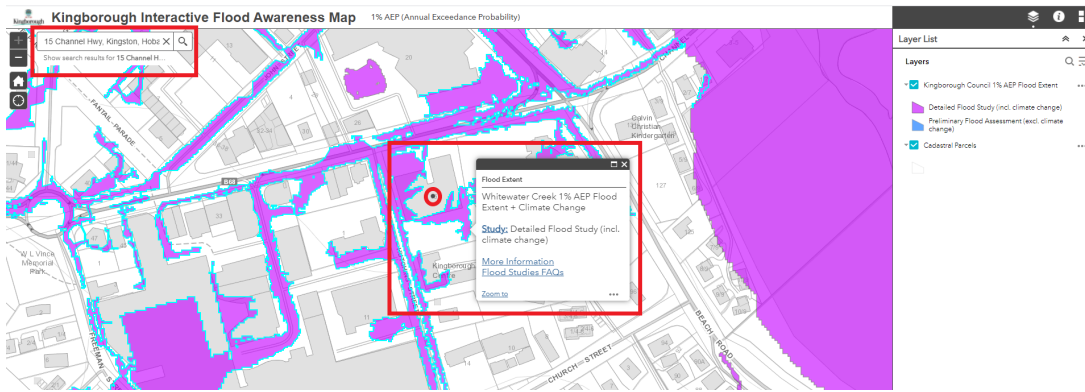
The modelling results are indicative, have not been validated and does not include climate change considerations. As such, this mapping provides an indication of likely flood prone areas only, but it cannot be relied upon for detailed flood information.

These maps have been produced using computer modelling. The models are based on the best available data to Council at the time the models were developed. The maps are indicative only of possible flood extents if the data and assumptions on which they are based are reproduced in a future weather event.


When you click on the purple or blue coloured feature, you will get a pop-up window with flood study information and some useful Kingborough website flood page links such as:

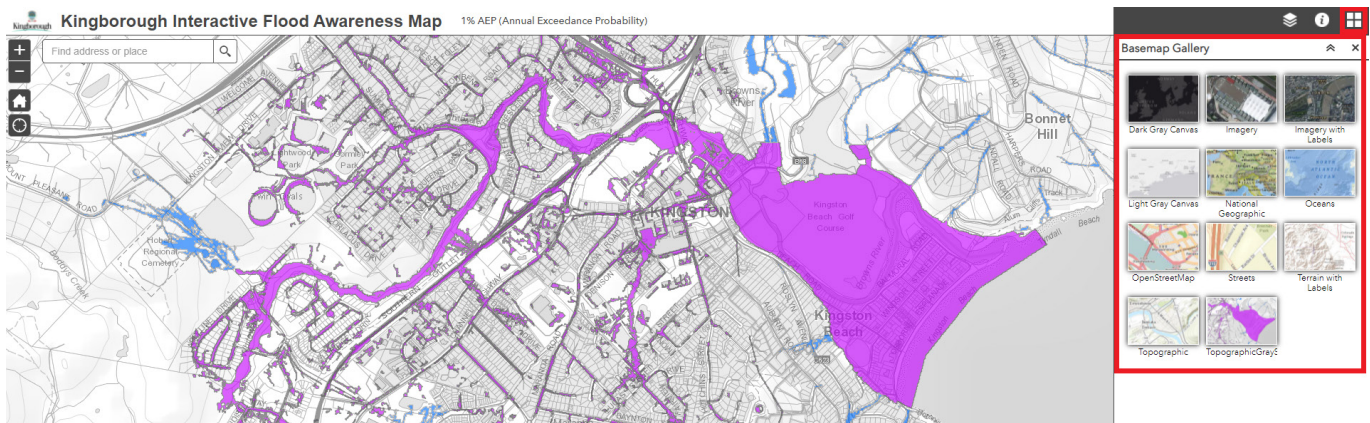
[More Information](#)

[Flood Studies FAQs](#)



The default basemap for Kingborough Interactive Flood Awareness Map is [theLIST](#) Topographic Grey Map.

The  button on the top right-hand corner of the map can be used to change the underlying basemap.



Detailed flood information for a specific property or site can be obtained by submitting your enquiry to kc@kingborough.tas.gov.au marked to the attention of the Stormwater Unit, and your enquiry will be responded to within 10 working days.

Please note that flood mapping in the rural and remote areas and the smaller population centres has not been assessed or developed at this stage.

Council is currently undertaking flood studies for the Coffee Creek Catchment and Margate Rivulet Catchment. The resulting information from these studies will be available on the Interactive Flood Awareness Map after finalisation and endorsement by Council.