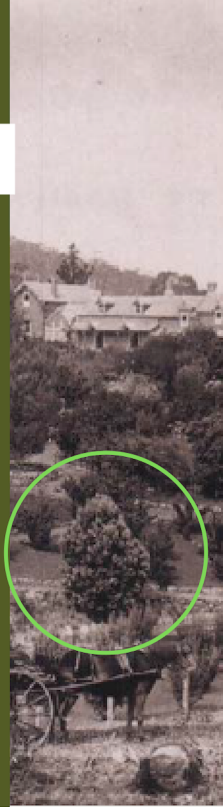


SIGNIFICANT TREE REGISTER

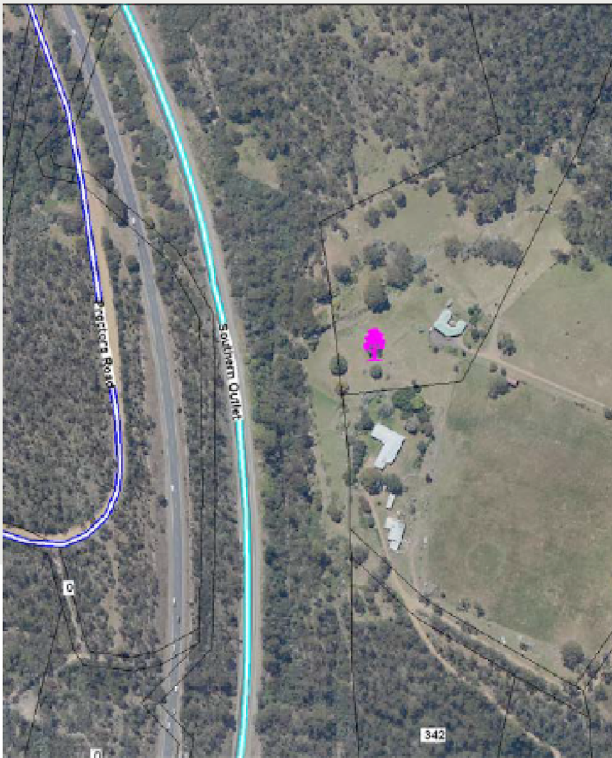
Data Sheet

DESCRIPTION:

A chestnut tree dating from the original gardens stand in front of the site of the original homestead. This chestnut was possibly sourced from the Royal Tasmanian Botanical Gardens and planted circa 1840.



MAP



TREE DETAILS

Number of Trees:

1

Species:

Horse Chestnut (Aesculus hippocastanum)

Location:

Southlea (The Lea Farm)
342 Proctors Road, Kingston

Coordinates:

E: 525,630.9 N:524,613.8

Estimated Age:

164

Approximate Height:

9m

Diameter at breast height:

0.69m

Canopy Spread:

16m

REFERENCE TRN - 2012-10

TREE ID KIN-C6.5.8

LISTED CATEGORIES OF SIGNIFICANCE

The trees meet the following policy criteria:

- ✓ 1. Aesthetic Significance
- ✓ 2. Size (height, circumference, canopy)
- ✓ 3. Age
- ✓ 4. Landscape Significance
- ✓ 5. Historical Significance
- ✓ 6. Rarity of species, variety or genome
- ✓ 7. Unusual physical features