

**Kingborough Community Forum  
GENERAL MEETING**

**Saturday 9 September 2023  
9.30am – 12pm  
Council Chambers – Civic Centre, 15 Channel Highway, Kingston**

**MINUTES**

**Attendees**

---

|                                |  |
|--------------------------------|--|
| Lara Van Raay                  | Blackmans Bay Community Association                      |
| Tammy Price                    | Bruny Island Community Association                       |
| Mike Jackson & Kate Lucas      | Coningham & Lower Snug Community Association             |
| June Walker                    | Howden Progress Association                              |
| Peter Laud                     | Kettering Community Association                          |
| Susan Price                    | Kingborough Landcare Network                             |
| Rob Crosthwaite                | Snug Landcare  |
| Maureen Robinson & Jill Hickie | Taroona Community Association                            |
| George Taylor and Nick Booth   | Friends of Longley Area Group                            |
| Mike Brough                    | Chair  |
| Council Officers:              |  |
| Daniel Smee                    | Director Governance, Recreation & Property Services      |
| Bianca Kleine                  | Communications and Engagement Support Officer            |
| Councillors:                   | Cr. Amanda Midgley                                       |
| Apologies:                     | Felicity Smart, (Margate Hills), Gloria Lonergan (SCRRA) |

**1. Introduction and Welcome and Acknowledgement of Country**

---

The Chair Mike Brough welcomed all participants and acknowledged and paid respect to the Tasmanian Aboriginal Community as the traditional and original owners and continuing custodians of this land and acknowledged Elders – past and present.

**2. Confirmation of Minutes of the Kingborough Community Forum 17 June 2023**

---

The forum participants endorsed the 17 June 2023 general meeting minutes as a true record.

**3. Business / Actions from the Last Meeting**

---

The forum participants acknowledged the list of actions and Council responses from the 17 June 2023 meeting.

**4. Presentation on State roads – Elspeth Moroni, Director Network Management, Department of State Growth – Speed limits, recently completed, current and upcoming road works**

---

Please refer to presentation and find below links:

[Transport Tasmania – Transport Services](#)

[Tasmanian Speed Zoning Guidelines - October 2020.PDF \(transport.tas.gov.au\)](#)

[Towards Zero - Tasmanian Road Safety Strategy 2017-2026 – Transport Services](#)

[Speed limits in Tasmania – Transport Services;](#)

Contact: [info@stategrowth.tas.gov.au](mailto:info@stategrowth.tas.gov.au)

Discussion followed about roadkill and the lowering of speed limits to reduce wildlife deaths, installation of culvert protections for animals as part of road design and safe pull-over points for tourists at scenic locations. Elspeth advised that the focus on road networks in regard to tourism is becoming greater and the team at Department of State Growth meets with Tourism Tasmania regularly and is planning to install signage in areas that are highly frequented by wildlife.

### **Other topics raised during the discussion:**

- Active Transport Linkages – It was noted that many of the DOSG strategies focus mainly on cars and that active transport linkages were equally important and should be given greater consideration.
- Lighthouse Road – residents have liaised with Department of State Growth and are advocating to have part of Lighthouse Road sealed due to dust hazard and speed limits reduced; request to reduce speed limits for the Dennes Point Junction and the Cape Queen Elizabeth turnoff.
- Snug and Kettering Speed Limits – residents have been requesting a speed limit reduction to 50 km/h in Snug and Kettering for some time, including a public petition and having Council support. It was noted that the department has a new speed officer, Mark Bandick, who is involved in assessing new applications. It was suggested to put in a new application, highlighting any changes that occurred since submitting the previous application.
- Howden Road Intersection – HPA has been liaising with the Department of State Growth about a review of speed limits (current 90km/h) on the Channel Highway at the intersection with Howden Road. The Transport Minister advised this will be looked at once the roadworks are complete - a situation that is considered unacceptable to the HPA.
- Leslie Road/Huon Hwy intersections – concern was expressed at the inadequacy of this intersection, particularly with an application from HBMI to increase its operations. It was noted that this will require development approval which may provide an opportunity to upgrade the intersection as a permit condition. The intersection will also be considered as part of the Huon Highway Corridor Study but there is currently no funding allocation to implement any upgrading works.

The chair thanked Elspeth Moroni on behalf of the forum for the presentation.

### **5. Reports from each Community Organisation**

---

The forum participants noted the consolidated reports and Council responses.

#### **KINGBOROUGH LANDCARE NETWORK**

AGM coming up, actions will be in next report, the group is interested in networking with everyone regarding environmental concerns.

#### **KETTERING COMMUNITY ASSOCIATION (KCA)**

Please refer to report attached to agenda.

#### **FRIENDS OF LONGLEY (FLAG)**

- The group did revegetation works at the NWB river track and planted 400 plants.
- Waterhole issues at NWB River remain, group attended a water monitoring day event
- Picnic in the Park planned for October.
- Speed limits – safety issues identified at the Huon Highway/Leslie Road intersection with increased heavy vehicle traffic arising from the quarries.
- Weed management flyers for foxglove and Spanish heath were hand-delivered to community members and will be available during the Picnic in the Park event.

#### **SNUG LANDCARE**

Nothing to report

#### **BLACKMANS BAY COMMUNITY ASSOCIATION (BBCA)**

Please refer to report. In addition - Blackmans Bay Primary School is raising money for a mural about threatened species, encouraging talking to kids about land.

### **TAROONA COMMUNITY ASSOCIATION (TCA)**

- Insurance is still a concern for the group (refer to previous reports).
- Pending changes to the planning scheme and the idea of the centralisation of planning schemes is a concern for residents.
- Group is working with Tas Networks with the idea of having a community battery.
- Tarooma Beach toilet block renovations – request for signage to be placed to inform about works.
- Community information sessions about bushfire preparedness have taken place. The risk has become an increasing concern due to increased density in the area and having only one road leading into and out of Tarooma.

### **HOWDEN PROGRESS ASSOCIATION (HPA)**

Clarification was sought when Council officers remove the weed spraying signs. Response: the timing depends on the type of chemical used.

### **BRUNY ISLAND COMMUNITY ASSOCIATION (BICA)**

- Local Government Reform discussions: group met with the Mayor and Cr Midgley, supportive of the proposal to establish a Bruny Board and are looking at options.
- Installation of steps and retaining wall at Boat Club complete.
- Group liaising with State Government about nurse and ambulance issues.
- Ladies Who Jump, Mona, raised 26K to establish school community gardens (Carrot Gardens).
- Sealing of Harvey Road complete, dog bag dispenser installed.
- LGBTQIA+ Action Plan – endorsement of program to be held on Bruny.

### **CONINGHAM AND LOWER SNUG COMMUNITY ASSOCIATION (CALSCA)**

- New Facebook group has been created: [The Greater Snug Safe Paths Project](#).
- Compliance officers have been actively engaged with dog interactions on the beaches.
- CALSCA was meeting with Council regarding erosion at Coningham Beach during winter.

### **SOUTH CHANNEL RATE PAYERS & RESIDENTS ASSOCIATION**

Please refer to report.

### **MARGATE HILLS COMMUNITY ASSOCIATION (MHCA)**

Planning an AGM in October, hoping to maintain the committee.

The chair thanked participants for their reports and reiterated to forward any service requests to [kc@kingborough.tas.gov.au](mailto:kc@kingborough.tas.gov.au) or call 6211 8200.

## **6. Presentation – Daniel Smee, Director Governance, Recreation & Property Services**

---

- (a) Update on property projects, including developments at Spring Farm and Whitewater Estates, Transform Kingston and Kingston Park (see attachment)
- (b) Other:
  - Community grants and Kingborough Community Awards applications are now open
  - [Kingborough Community Awards](#)
  - [Sport and Recreation survey](#)
  - [Health and Wellbeing survey](#)
  - [Dog Management Policy](#) – consultation to be open towards the end of September, draft to go to Council on Monday 18 September.

Other: Spring Farm Village Development – the developer (Tipalea Pty Ltd) is holding a pre-lodgement [community consultation session on 19 September at 6.30pm](#)

## 7. Updates from Council – Significant Council Decisions - Daniel Smee

---

- Adopted a Statement on Housing.
- Approved DA for Huntingfield House, including POS contribution to provide a shared path along Huntingfield Avenue.
- Adopted a Diversity and Inclusion Statement.
- Approved a lease of part of the Maranoa Heights Reserve to the Kingston Neighbourhood house to establish a Community Garden.
- Resolved to provide a submission to the Local Government Board that confirms Council's openness to reform and a desire to collaborate with Huon Valley Council.
- Considered a report on short-stay accommodation in Kingborough and resolved to advocate for more active monitoring by the State Government in relation to the impacts.
- Received a report in relation to the Kingston Beach Flood mitigation investigation.
- Approved a Private Works Policy.
- Approved a Coastal Hazards Policy.
- Agreed to establish a dedicated area of NW Bay cemetery for natural burials.

**Budget process** – groups are encouraged to submit budget items as early as possible to enable assessment, scoping, costing and preparation of a business case prior to the end of December.

## 8. Other business

---

No update yet on the Tasmanian Planning Scheme

Meeting closed at 12.20pm.

## 9. Next meeting: Saturday 2 September 2023 – 9.00am – 10.30am

---

### List of Actions

| WHAT  | WHO                                      |
|---|--|
| Liaison with Department of State Growth about speed limits. | Participants to liaise with DSG directly |

### Attachments:

- Property & Recreation Infrastructure Projects – Daniel Smee, Director Governance, Recreation & Property Services
- Kingborough State Road Projects and Planning – Elspeth Moroni, Director Network Management  
Department of State Growth

Kingborough Community Forum update  
Elspeth Moroni – Director Network Management  
9 September 2023

# Kingborough state road projects and planning



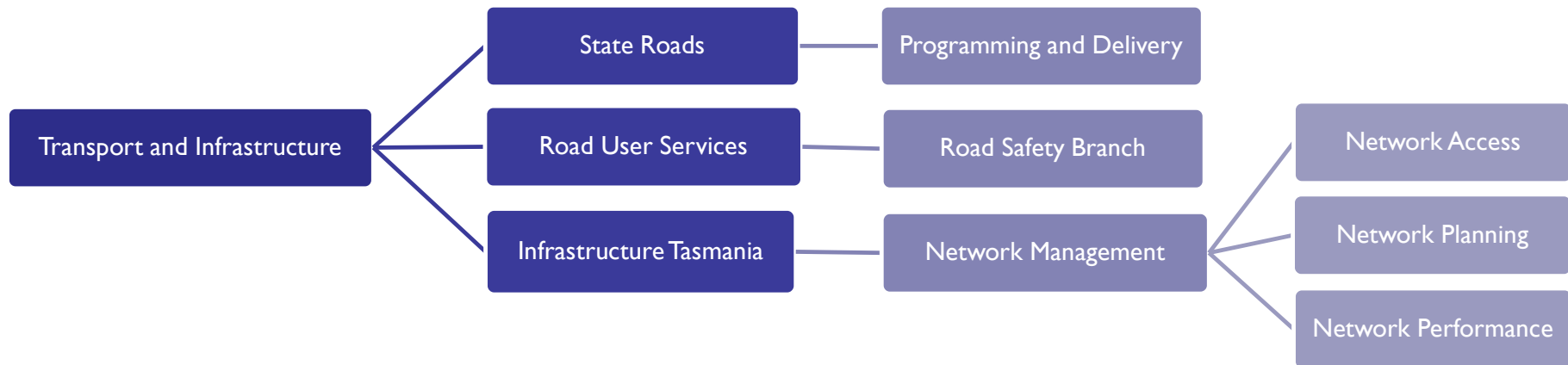
# Agenda



- 1. Speed limits and recent changes
- 2. Project updates in the region
- 3. Planning work
- 4. Maintenance

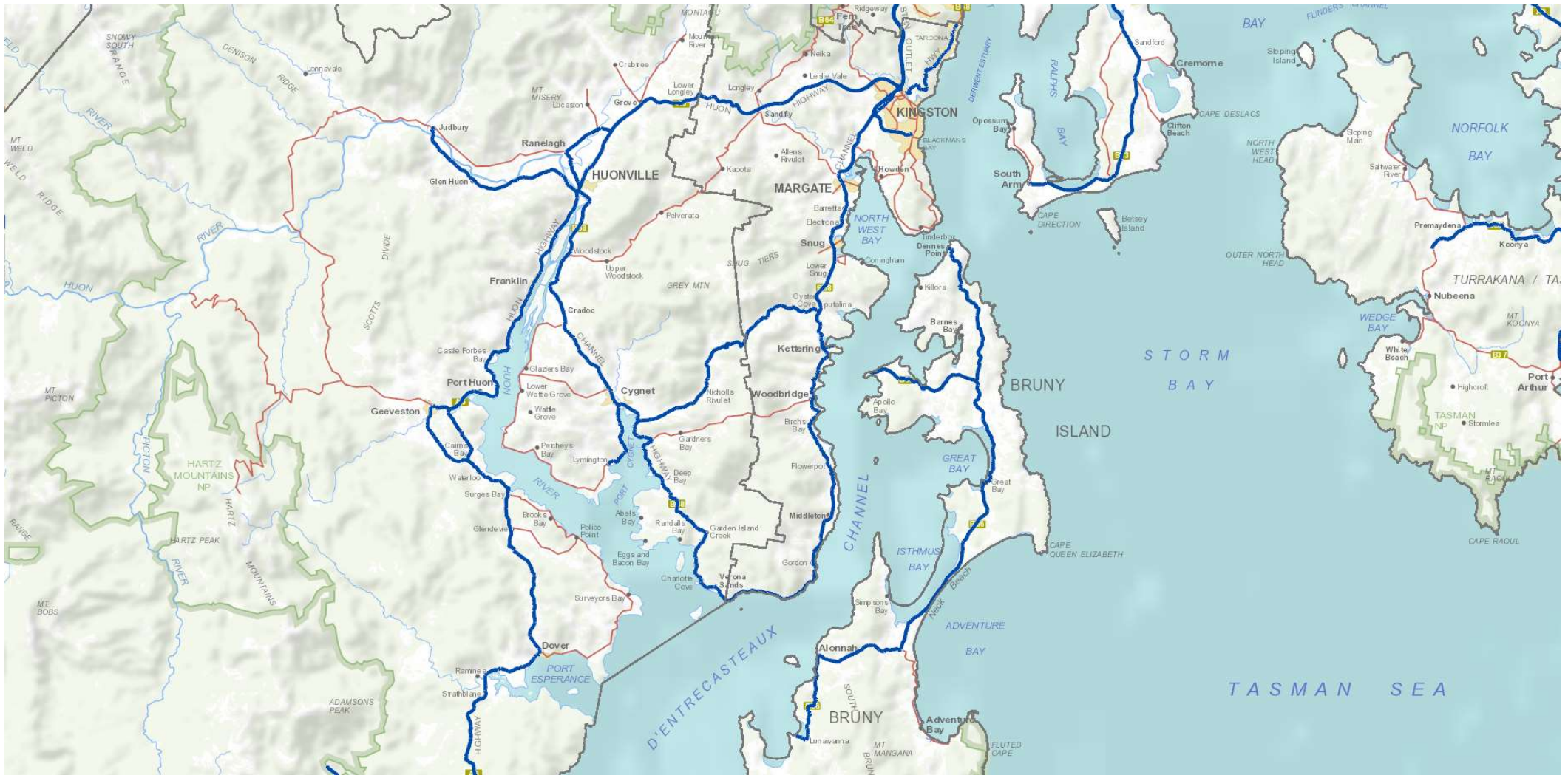


# Who we are



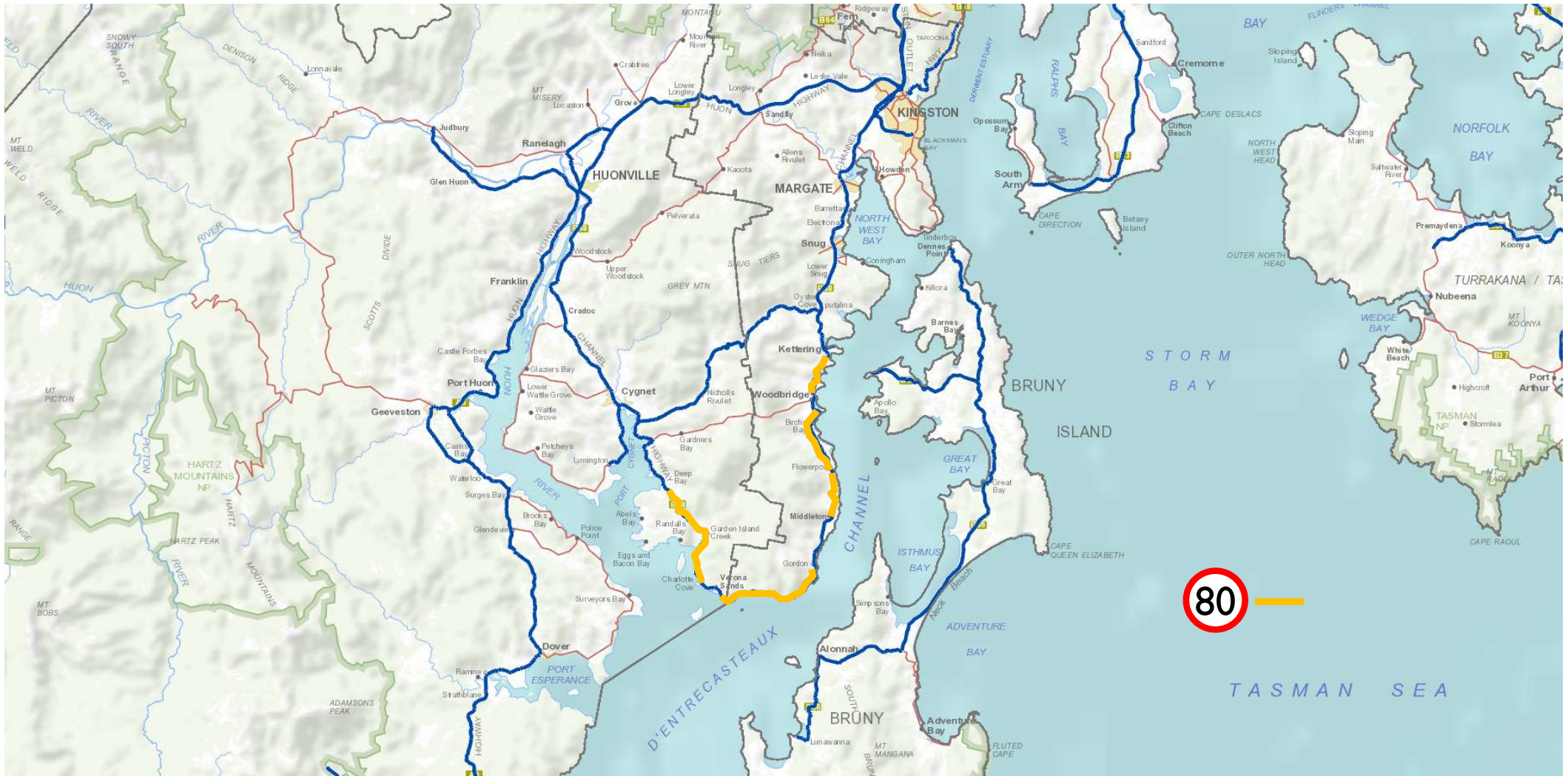
**Transport and Infrastructure** – *promotes and enables the safe, reliable, and efficient transport of people and goods, to connect Tasmanian communities, promote freight efficiency and growth in the Tasmanian economy, and improve the visitor experience .... and also support infrastructure delivery.*

# State road network in the region



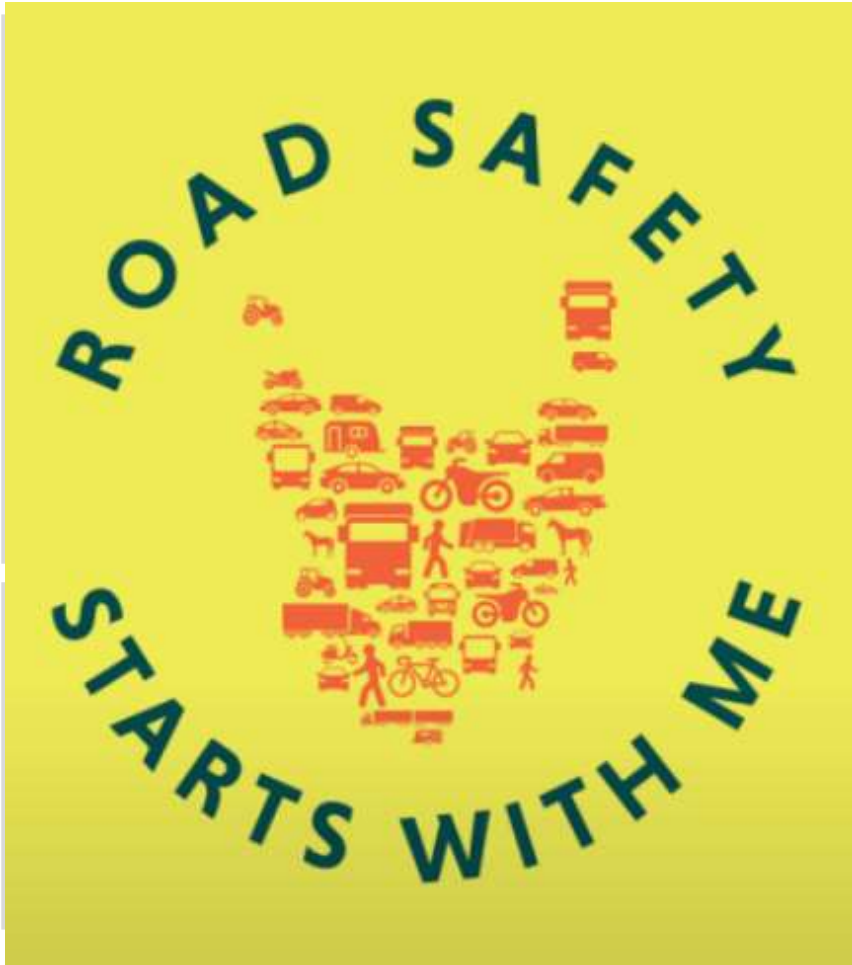


# Recent speed limit changes in the region



# Speed zoning principles

Ref: <https://rsac.tas.gov.au/road-safety-starts-with-me/>



- There are two types of speed limits:
  - default speed limits
  - posted speed limits.
- Default speed limits are set by legislation and apply when there are no speed limit signs. In accordance with the *Road Rules 2019*:
  - 50 km/h urban roads (in built-up areas)
  - 100 km/h sealed rural roads (outside built-up areas) except 90 km/h in the Kingborough municipality since 2013
  - 80 km/h unsealed rural roads (outside built-up areas)
- Posted speed limits are used when the default limits are considered to be inappropriate. In accordance with the *Traffic Act 1925*, posted speed limits on all roads in Tasmania need to be approved by the Transport Commission.
- Speed limits are a maximum speed NOT a target speed.
- Motorists have a responsibility to drive to the conditions.

Fewer than 200 serious injuries and deaths on our roads by 2026

## Towards Zero Tasmanian Road Safety Strategy 2017-2026



## Road safety strategy and speed impacts

- The priority road safety areas during the 2020-2024 period are:
  - Making our rural roads safer
  - Improving safety in our towns and cities
  - Saving young lives
  - Encouraging safer road use
  - Making visitors safer
  - Improving safety through vehicles and technology.
- The Strategy embraces the Safe System approach which recognises that human error is inevitable and aims to establish a road network system which allows for this
- Research indicates that a 10 km/h reduction in travelling speeds can lead to a 25 percent reduction in deaths and serious injuries
- We have a new role in the department's Road Safety Branch Mark Bandick, Policy and Project Officer – Speed Management

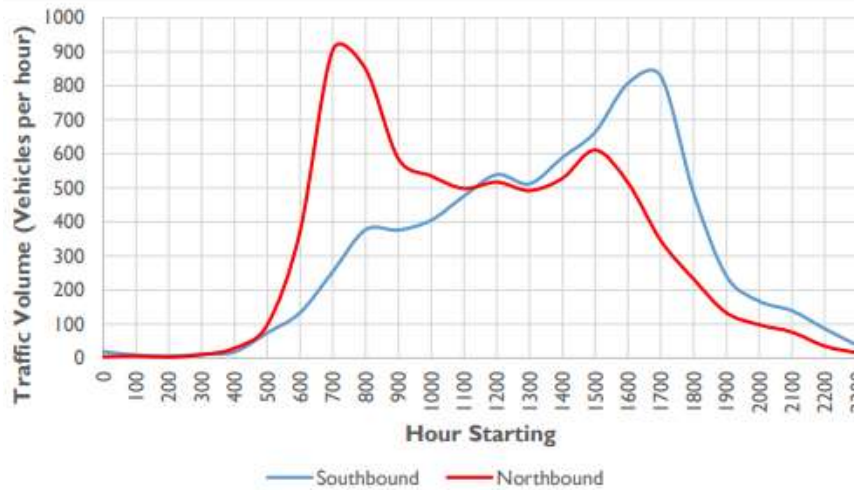
# Speed limit changes – The process



- Setting of speed limits is guided by state and national standards
- We look to find a balance between safety and efficiency
- Speed limit change requests can be submitted by:
  - the community
  - Local Government Councils
  - Police
  - road owners.
- Traffic engineers look at factors in assessing a request
- If suitable, the request is sent to the Commissioner for Transport for approval or rejection.
- If approved, changes are implemented and relevant stakeholders are advised

# Speed limit setting – Key factors

Ref: Channel Highway Corridor Study, September 2020 Figure 4 Algona Road to Sandfly

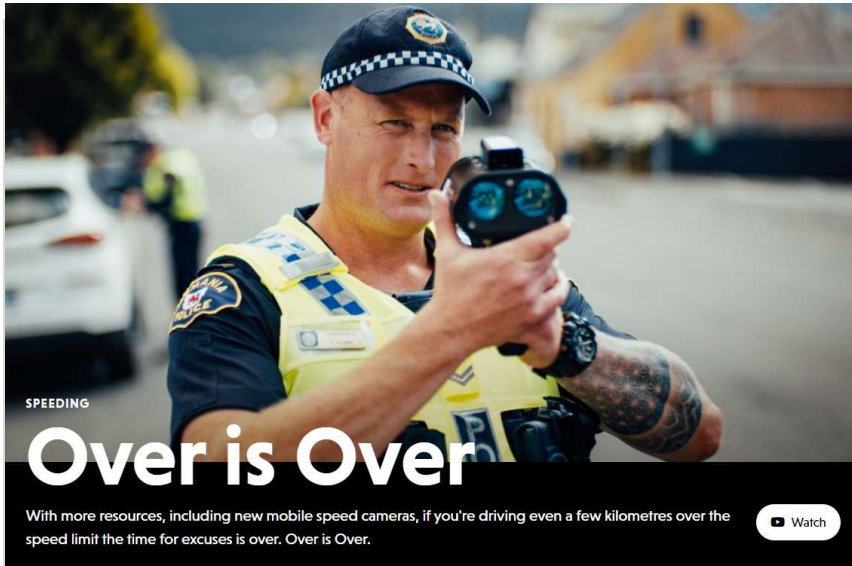


Ref: <https://rsac.tas.gov.au/speeding/>

- It should be noted that every location has its own unique characteristics, and engineering judgment must be applied to select an appropriate speed limit based on site specific considerations.
- Specific factors to consider include:
  - road function and classification
  - traffic volumes
  - road width and cross section
  - road alignment
  - number of accesses and intersections
  - properties surrounding the road area
  - roadside development
  - pedestrian and cyclist use, venerable road users
  - crash history
  - compliance with AustRoads and engineering guidelines

# Speed zoning principles

Ref: <https://rsac.tas.gov.au/speeding/over-is-over-2/>



- Speed limits need to achieve a reasonable balance between:
  - road safety
  - local amenity
  - traffic mobility
- In order to be effective, speed limits need to be:
  - realistic and credible
  - reflect the road's characteristics and environment
  - self-evident to motorists.
- Speed limits are not always the most appropriate tool to address safety concerns eg warning signs, speed advisory signs.
- Motorists can become confused by too many speed limit changes along the same route.
- Speed zones need to be clearly and regularly signed so that motorists are not confused about the limit which applies.

# Project, planning and maintenance updates



1. Speed limits



2. Project updates in the region

3. Planning work

4. Maintenance



# Completed: Taroona pedestrian crossing and bus shelter upgrade





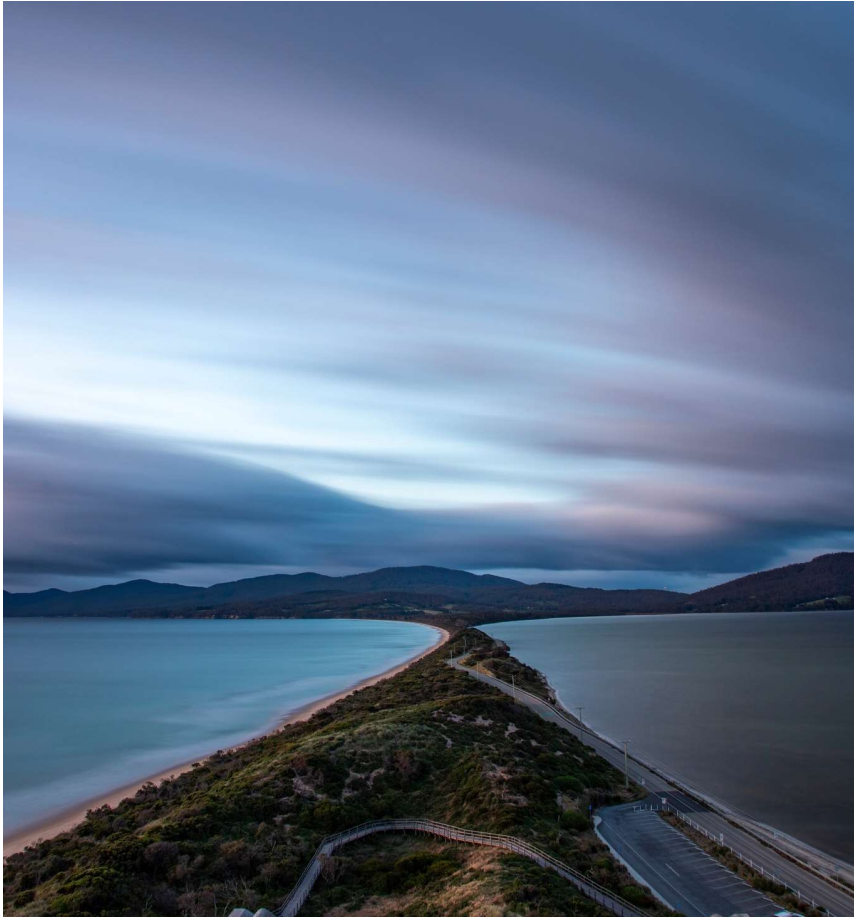
## Completed: Park and Ride at Huntingfield and Firthside



# Underway: Huntingfield roundabout and slip lane



## Underway: Bruny Island Ferry Terminal



# What we are doing



## Project design and delivery:

- Kingston Bypass duplication and Algona roundabout upgrade
- Southern Outlet Transit Lane
- Channel Highway south of Margate safety works

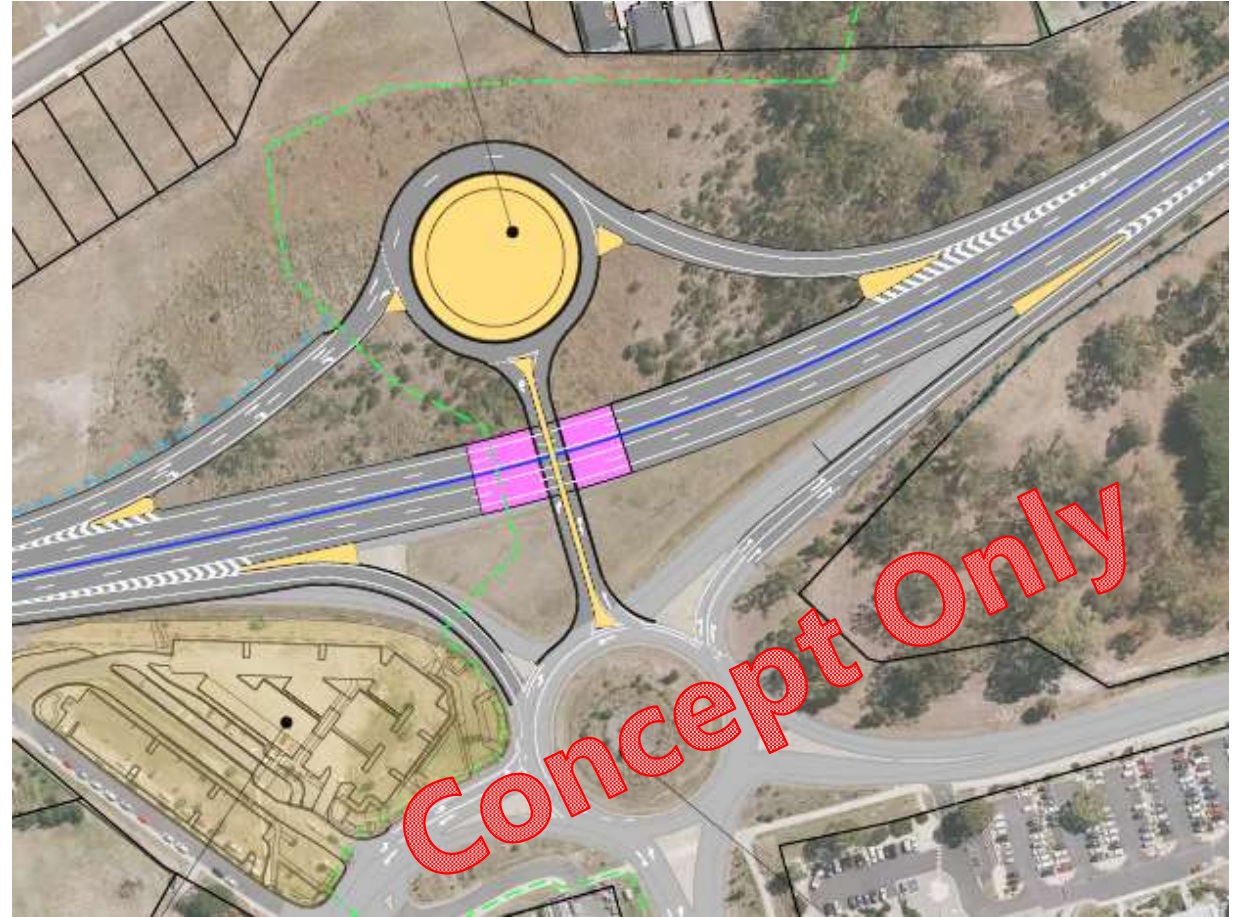
## Corridor strategies:

- Huon Highway
- Channel Highway

## Planning and investigations:

- Margate and Snug pedestrian crossings
- Margate to Huntingfield shared pathway

# Kingston Bypass duplication and Algona roundabout upgrade



# Southern Outlet Transit Lane



# Huon Highway Corridor Study



# Margate and Snug pedestrian crossings





# Channel Highway Corridor Study



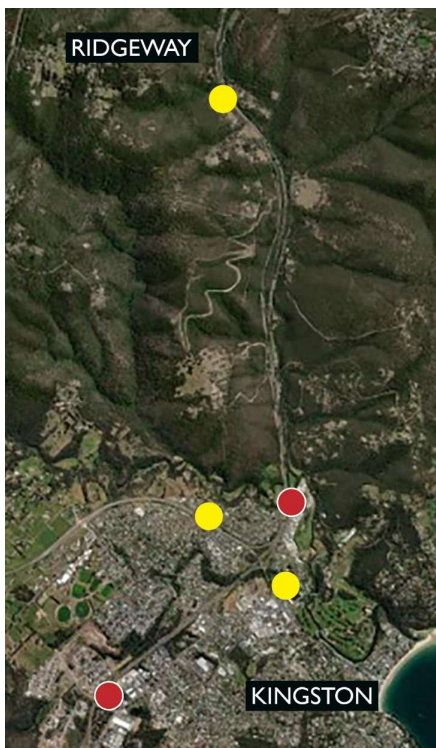
# Channel Highway safety improvements



# Margate to Huntingfield shared pathway

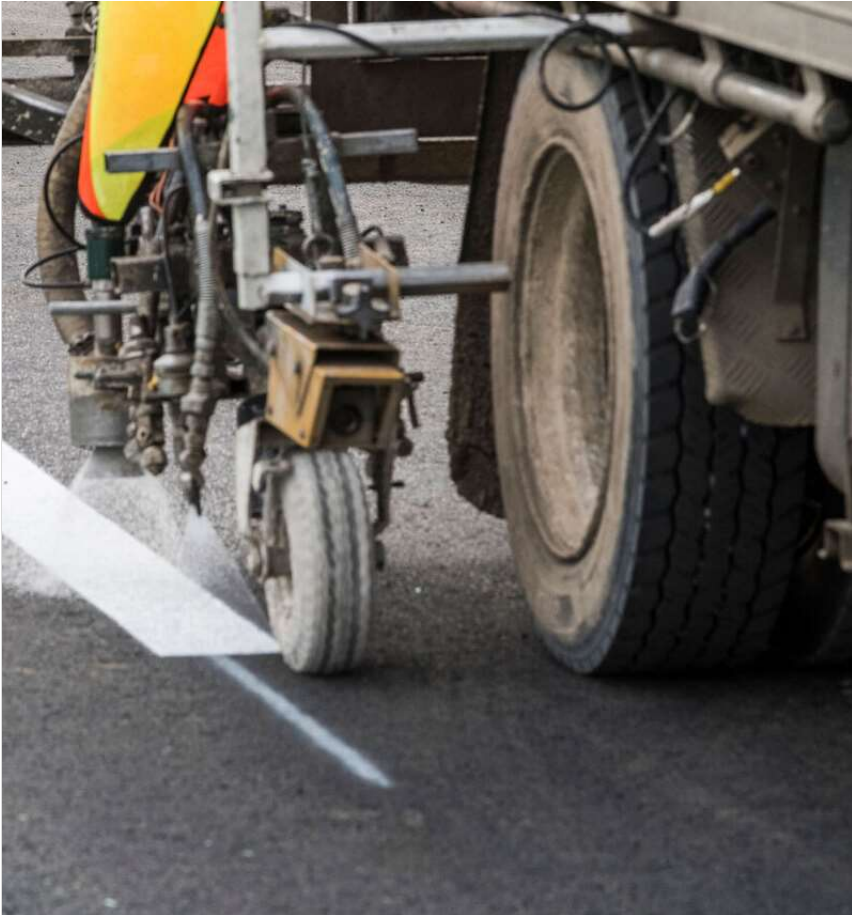


# Use of intelligent transport systems (ITS)



- We are working on making our roads safer and providing users with additional information utilising technology
- We are rolling out OTIS (onroad traveller information system)
- Variable Message Signs (VMS) at yellow dot locations:
  - Southern Outlet
  - Beach Road Kingston
  - Huon Highway
- CCTV cameras at red dot locations
- We will also be installing more variable speed limit signs on the Southern Outlet
- We have already rolled out more than 600 electronic school speed limit signage across Tasmania
- ITS including a fiberoptic communications cables connect all our devices back to our Traffic Management Centre to assist in:
  - traffic management
  - incident response
  - managing congestion.

# Maintenance



- We have a forward program of maintenance work.
- These ensure our road assets are maintained to maximise their life
- These works includes our following programs:
  - periodic resurfacing
  - line marking
- These programs take place over summer / early autumn when it is warmer.
- We also inspect every road at least once a week for routine maintenance issues.
- Any issues found in our inspections are logged and prioritised for repairs.
- You can also report any hazards or maintenance issues on our 24/7 hotline 1300 139 933 (option 2).

Questions?



# Contact details



Elsbeth Moroni  
Director Network Management  
[elsbeth.moroni@stategrowth.tas.gov.au](mailto:elsbeth.moroni@stategrowth.tas.gov.au)  
Phone: 0455 437 863



Kingborough Community Forum 9 September 2023

Reply to questions on notice by Elspeth Moroni, Director Network Management, Infrastructure Tasmania, Department of State Growth

### **1 – Speed Management Policy Officer**

Contact details for the department's new Speed Management Policy and Project Officer are below, and Mark would be happy to help with engaging with local government in the area. He is based on the Road Safety Branch of the Road User Services Division of the Department of State Growth.

Mark Bandick

6165 6046

[Mark.bandick@stategrowth.tas.gov.au](mailto:Mark.bandick@stategrowth.tas.gov.au)

### **2 – Speed limit information**

For information, the link below is to our Tasmanian Speed Zoning Guidelines

[https://www.transport.tas.gov.au/\\_data/assets/pdf\\_file/0003/458211/Tasmanian\\_Speed\\_Zoning\\_Guidelines\\_-\\_October\\_2020.PDF](https://www.transport.tas.gov.au/_data/assets/pdf_file/0003/458211/Tasmanian_Speed_Zoning_Guidelines_-_October_2020.PDF)

Below is also a link to the department website page discussing speed limits

[https://www.transport.tas.gov.au/archive/roads\\_and\\_traffic\\_management/speed\\_limits\\_in\\_tasmania](https://www.transport.tas.gov.au/archive/roads_and_traffic_management/speed_limits_in_tasmania)

### **3 – Wildlife protection design guidelines**

The department uses a number of tools and initiatives aimed at reducing the roadkill toll on the State road network. These may include fencing, animal-friendly road crossings, and static and electronic wildlife warning signage at known hotspots to help raise driver awareness.

Rather than following general guidelines, we do environmental assessments for our road and bridge projects. We take a case-by-case approach in developing measures to reduce the level of animal fatalities when a species-specific issue is identified – for example, penguin culverts and exclusion fencing on the Bruny Island Neck. In addition, the department regularly liaises with key stakeholders such as the Department of Natural Resources and Environment Tasmania, the Parks and Wildlife Service and local councils.

Driver behaviour also plays an important role in reducing roadkill. Drivers are encouraged to do their part in protecting wildlife by reducing their speed, particularly between dusk and dawn. In addition to the signage on state roads, the department also promotes driver awareness among visitors through signage at key airports and communication materials distributed through car rental companies, tourist information centres and online.

### **4 - Bruny Island road State Roads ownership**

Below is a link to a map showing state road ownership in the south Bruny area. This clearly shows Bruny Island Main Road ends at Grundys Road. If you can't view this bookmark for any reason, just go to Listmap online and choose the layer called "State Highways and Subsidiary Roads".

<https://maps.thelist.tas.gov.au/listmap/app/list/map?bookmarkId=894952>





# Property & Recreation Infrastructure Projects

Public Toilets

Community  
Halls

Playgrounds

Tracks & Trails



# PUBLIC TOILETS



# Kingston Park (\$400,000)



# Christopher Johnson Park (\$170,000)



# Kettering Oval (\$175,000)



# Longley Reserve (\$135,000)



# Margate Hall (\$210,000)

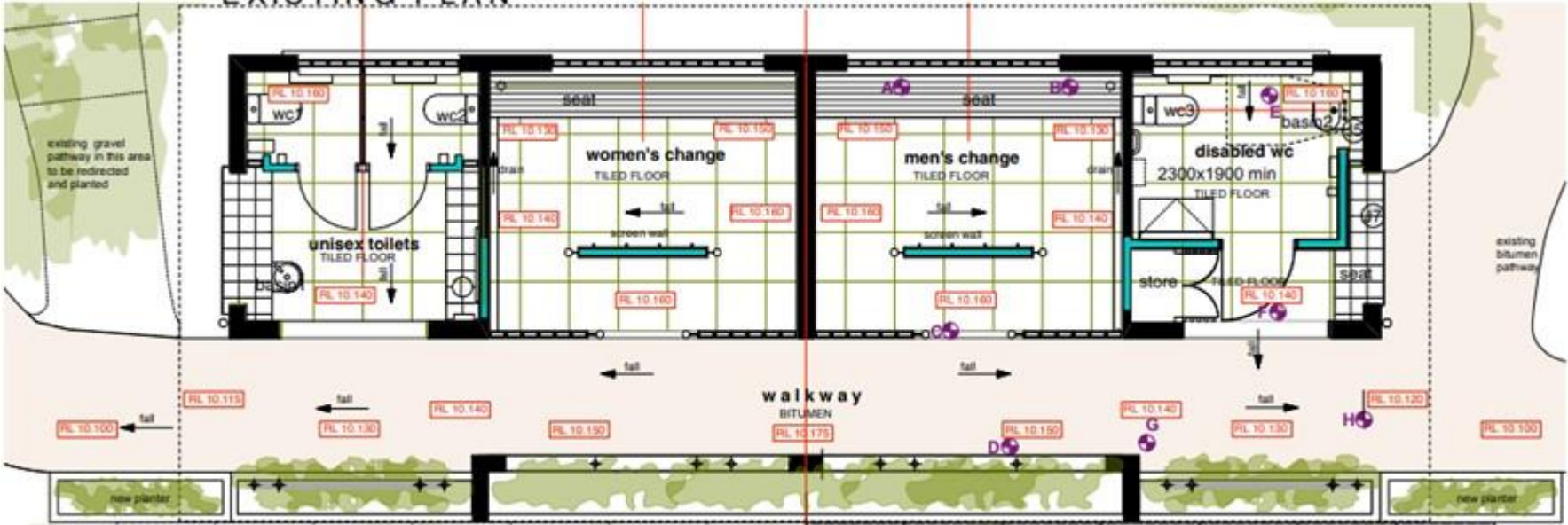




# Woodbridge Hall (\$185,000)



# Taroona Beach (\$300,000)



PROPOSED PLAN

Taroona Bathing Pavilion

Levels Existing and proposed

# Mt Bike Park (\$125,000)



# Snug Foreshore (\$250,000)



# COMMUNITY HALLS



# SNUG HALL (\$250,000)

---



- Kitchen
- Heating
- Toilets
- Acoustics

# TAROONA HALL DECK (\$215,000 + \$22,000)



# ADVENTURE BAY HALL

---

- Kitchen Upgrade (\$6,000)





# WOODBIDGE HALL

---

- Toilet
- Stage
- Painting?



# PLAYGROUNDS



# KINGSTON PARK



# LOUISA HINSBY PARK (\$175,000)



# DRU POINT (\$255,000)



# IN PROGRESS

- Dru Point Stage 2 (\$150,000)
- Silverwater Park Playground and Carpark Upgrade - \$300,000
- Mt Royal Reserve Upgrade - \$175,000
- Alamo Close Playground Upgrade - \$200,000
- Willowbend Playground Upgrade - \$100,000
- Spring Farm New Playground - \$200,000

# TRACKS AND TRAILS



# UNDERPASS TO WETLANDS (\$850,000)





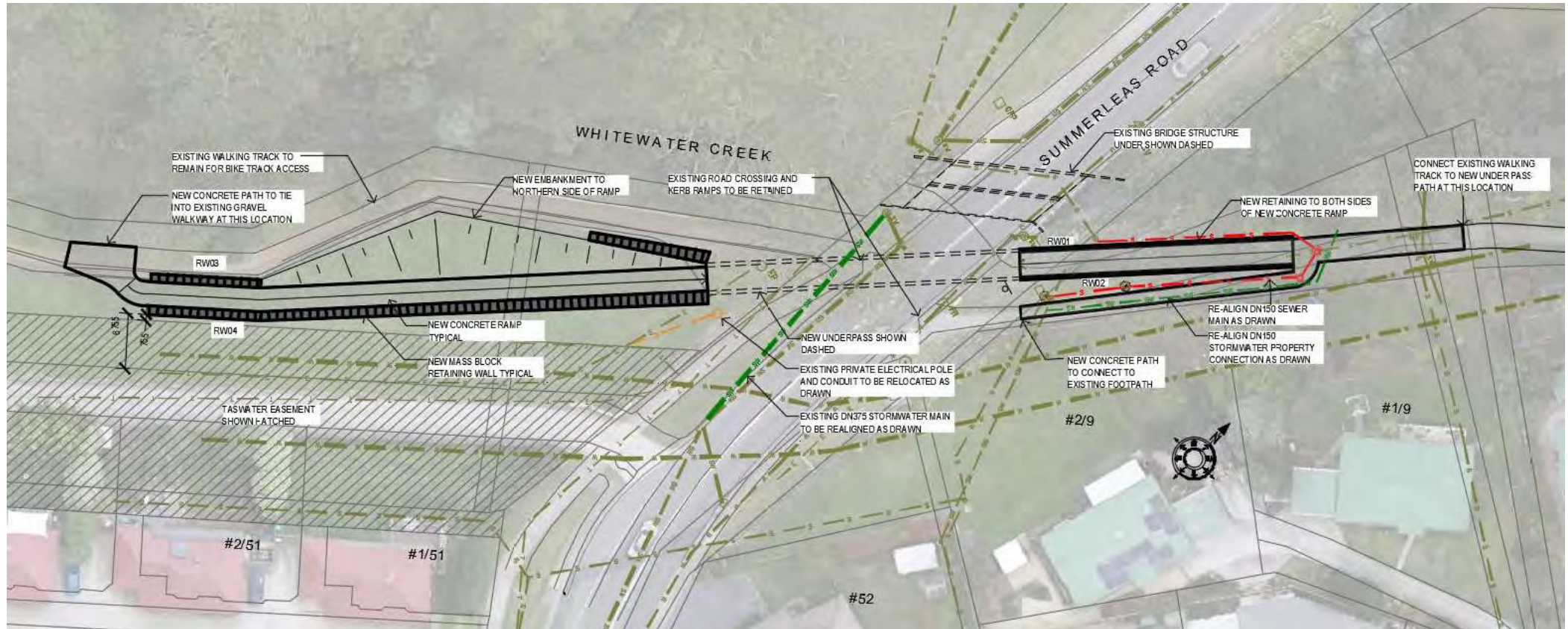
# WETLANDS TO CHANNEL HIGHWAY (\$270,000)



# WHITEWATER CREEK TRACK (\$800,000)



# SUMMERLEAS ROAD UNDERPASS (\$1.2M)



# SPRING FARM TRACK (\$400,000)



# KSC CONNECTOR TRACK (\$140,000)



# MISSING LINK TRACK (\$580,000)



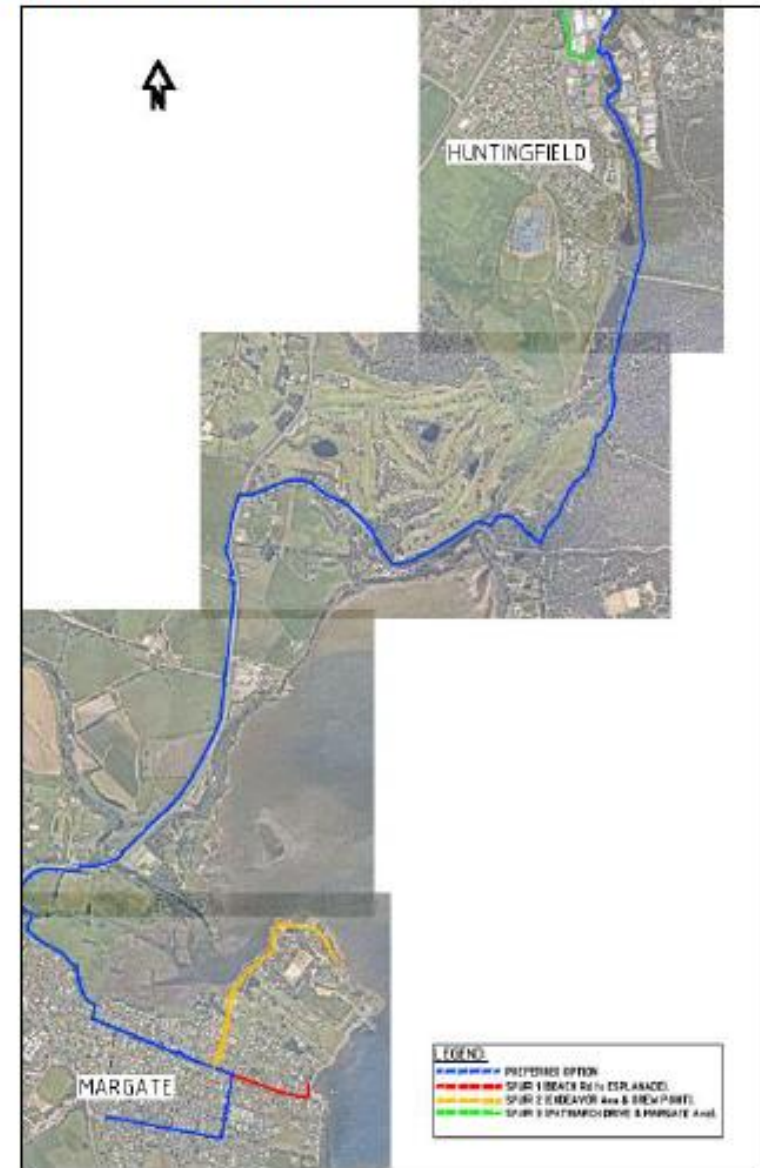
# HUNTINGFIELD CONNECTION



# HUNTINGFIELD TO MARGATE SHARED TRAIL

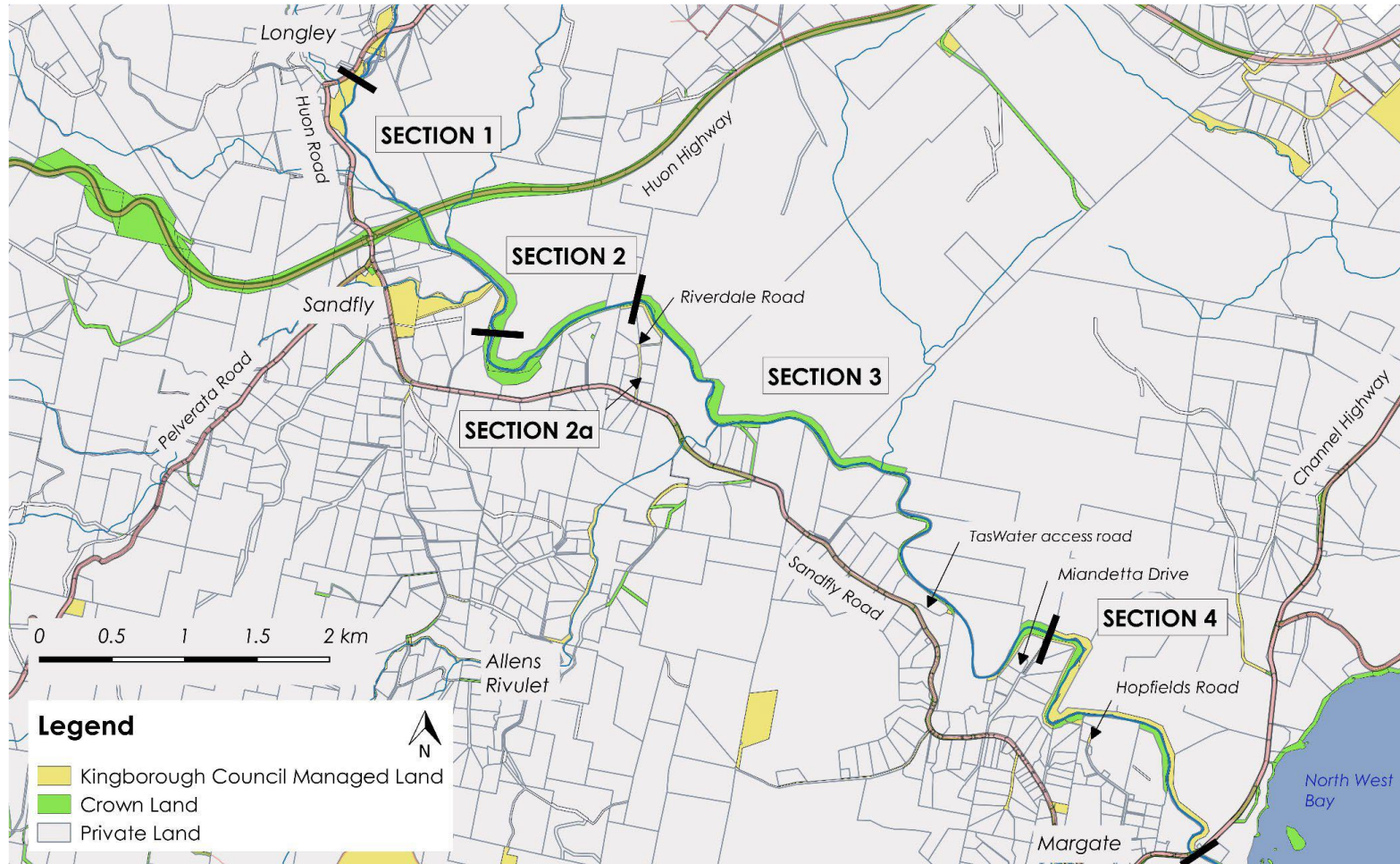


Figure 2 - Preferred Options Alignments





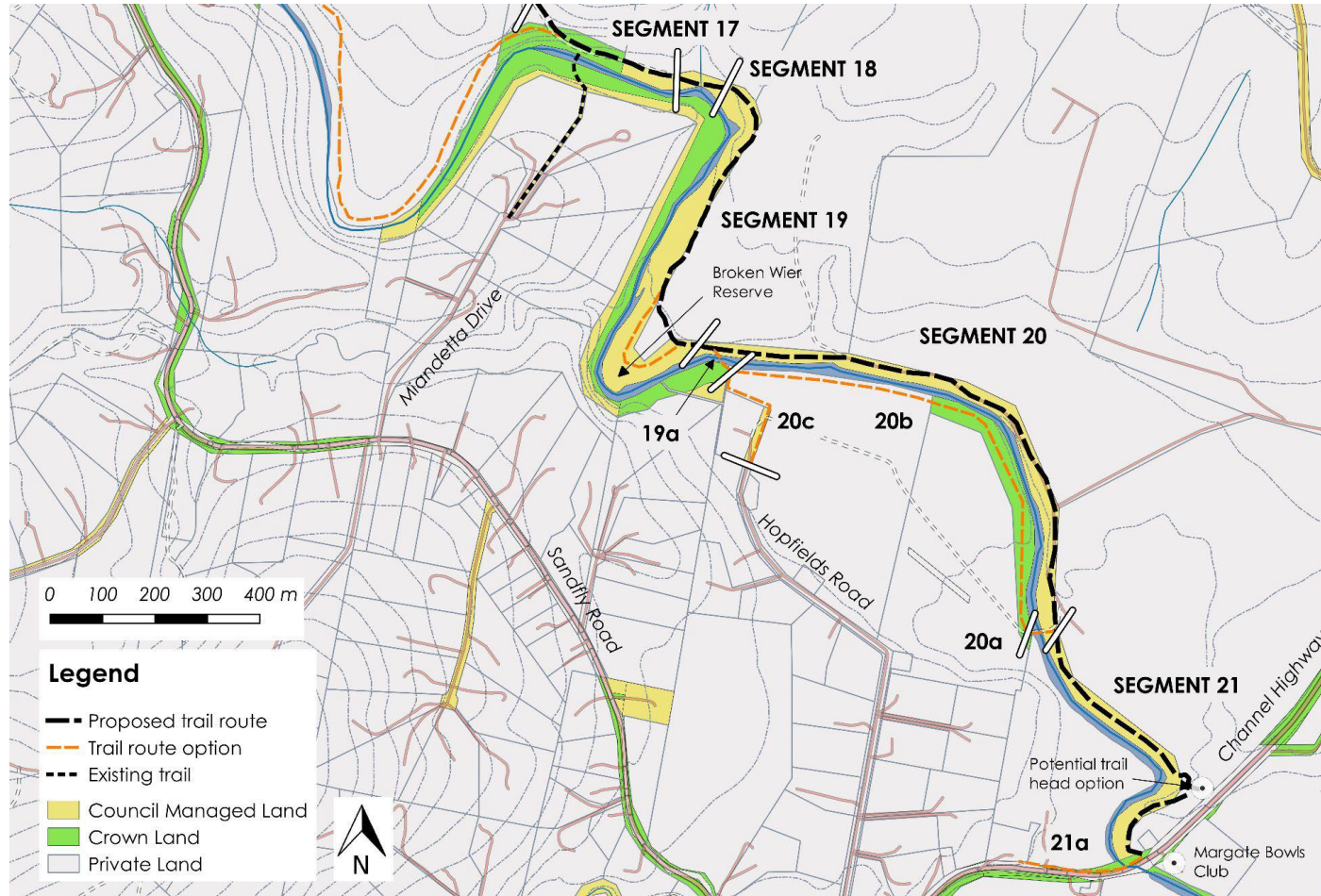
# NORTH WEST BAY RIVER TRAIL



# NORTH WEST BAY RIVER TRAIL STAGE 1 (\$180,000)



# NWB RIVER TRAIL STAGE 2 DESIGN (\$30,000)



# LESLIE VALE TRACK UPGRADES (\$160,000)



# BORONIA BEACH TRACK (\$70,000)





# KAOOTA TRAMWAY TRACK (\$350,000)

- Lawless Road upgrade
- Turning head
- Carparking
- Easement
- Gates

# TINDERBOX HILLS TRACK (\$25,000)

- Licence Agreement
- Land acquisition
- Track upgrades



# IN PROGRESS

- ❑ Nierinna Creek Track (Bridge Replacement) - \$170,000
- ❑ Taroono Foreshore Track (Licence and upgrade) - \$12,000
- ❑ Picket Hills Track (Drainage and resurface) - \$60,000
- ❑ Carpark area for Barretta Reserve - \$15,000
- ❑ Tinderbox Hills (Licence and land acquisition) - \$25,000





# TRANSFORM KINGSTON



# KINGSTON PARK — STAGES 1 & 2



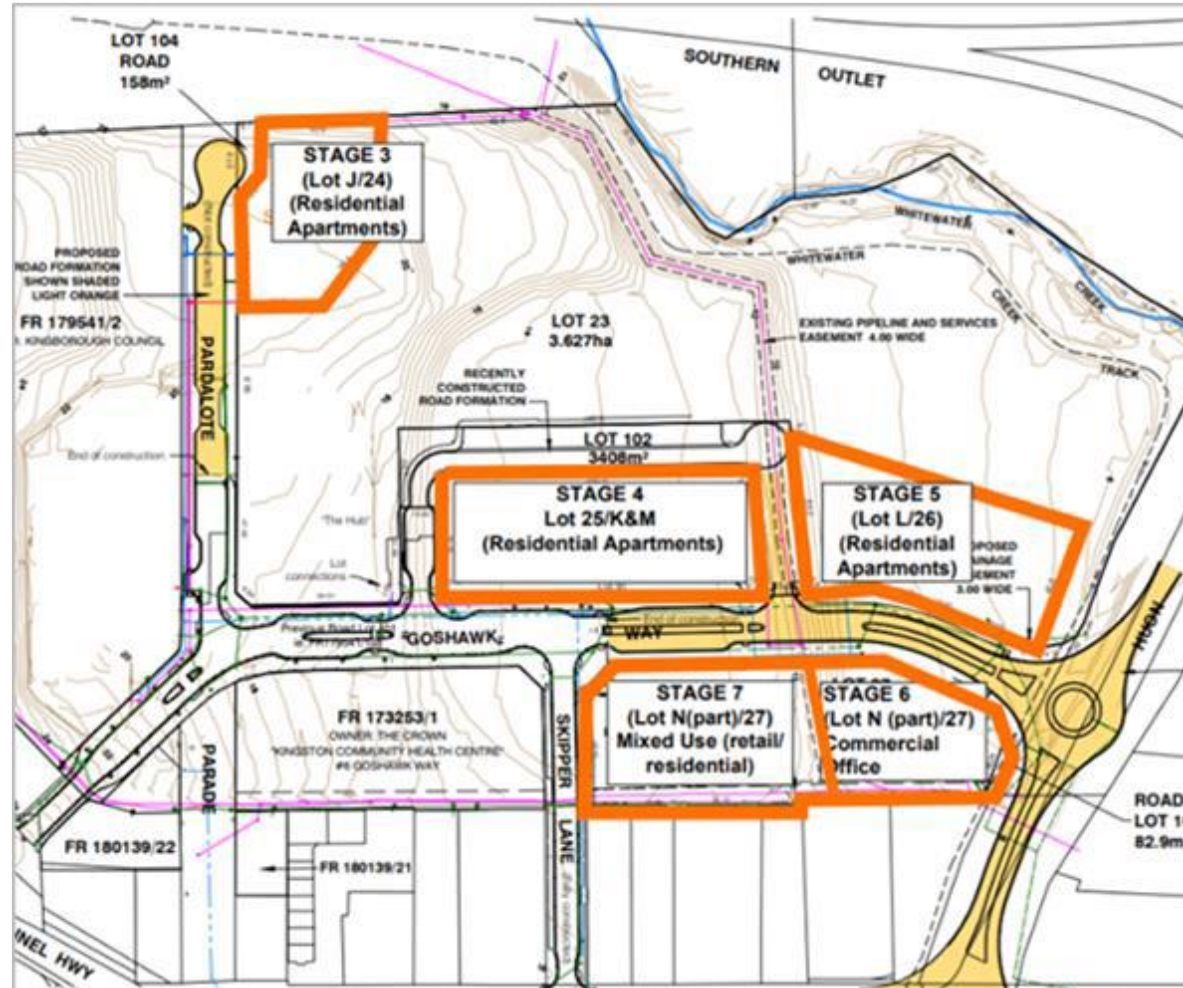
# KINGSTON PARK — STAGE 3



# KINGSTON PARK — COMMERCIAL OFFICE

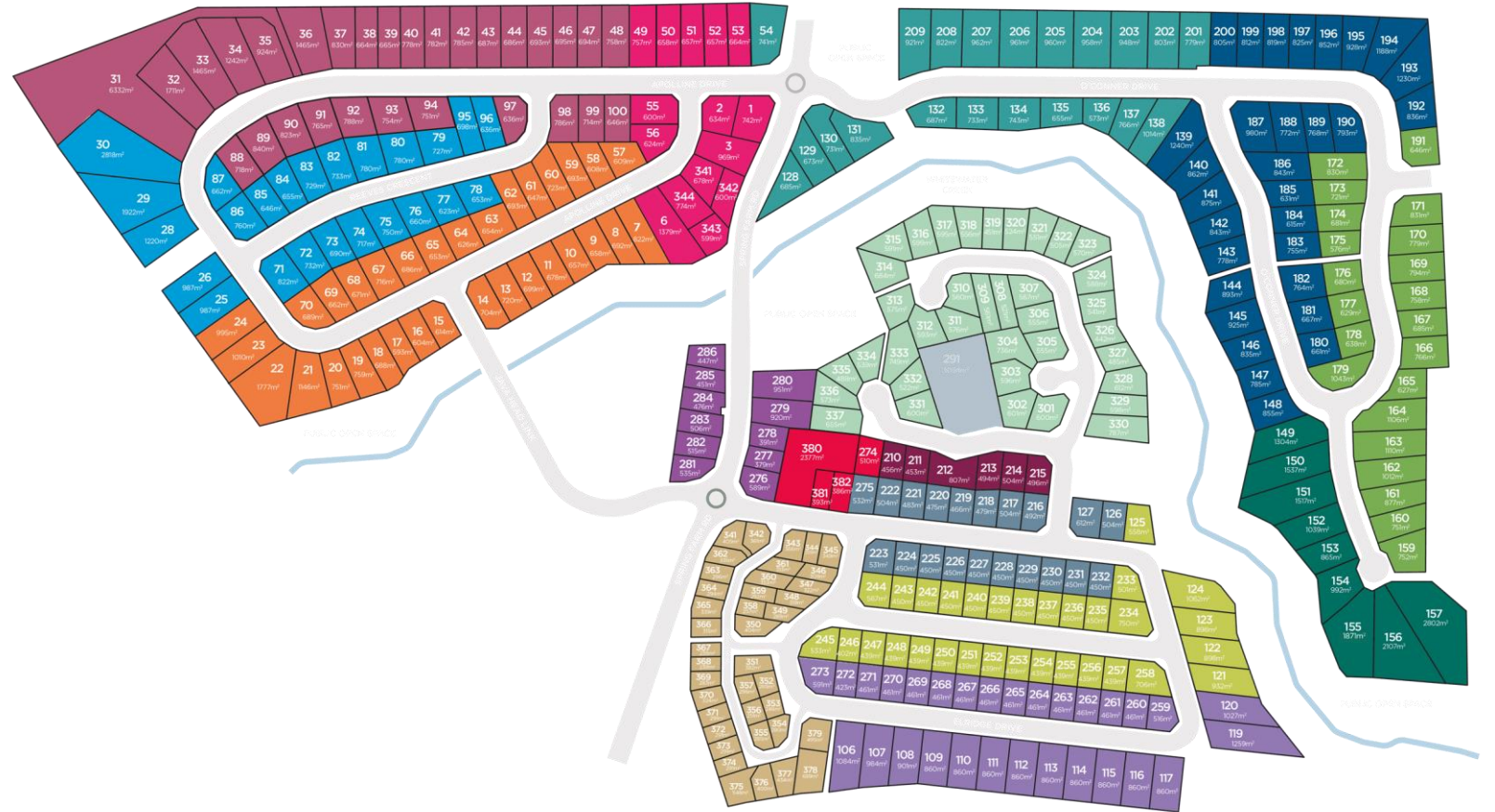


# KINGSTON PARK – FUTURE STAGES



# OTHER DEVELOPMENTS

- Spring Farm Estate
- Whitewater Estate
- Huntingfield
- Margate



# SPRING FARM VILLAGE PROPOSAL

Coles supermarket plus 15 retail Outlets, medical centre, 350 carparks

Community Information Session  
Tuesday 19 September 6:30pm  
@ Community Hub

