

APPLICATION FOR PLANNING APPROVAL

Application Number: DA-2025-193

Proposal: Extension to medical centre (general practice)

Subject Site: 'Kingston Plaza', 20 Channel Highway, Kingston and 4 John Street, Kingston

Responsible Planning Officer: Poppy Scharkie

Advertised Documents:

- Application Plans
- Traffic Impact Assessment and Further Information Responses
- Town Planning Assessment Report
- Cover Letter

Available upon request:

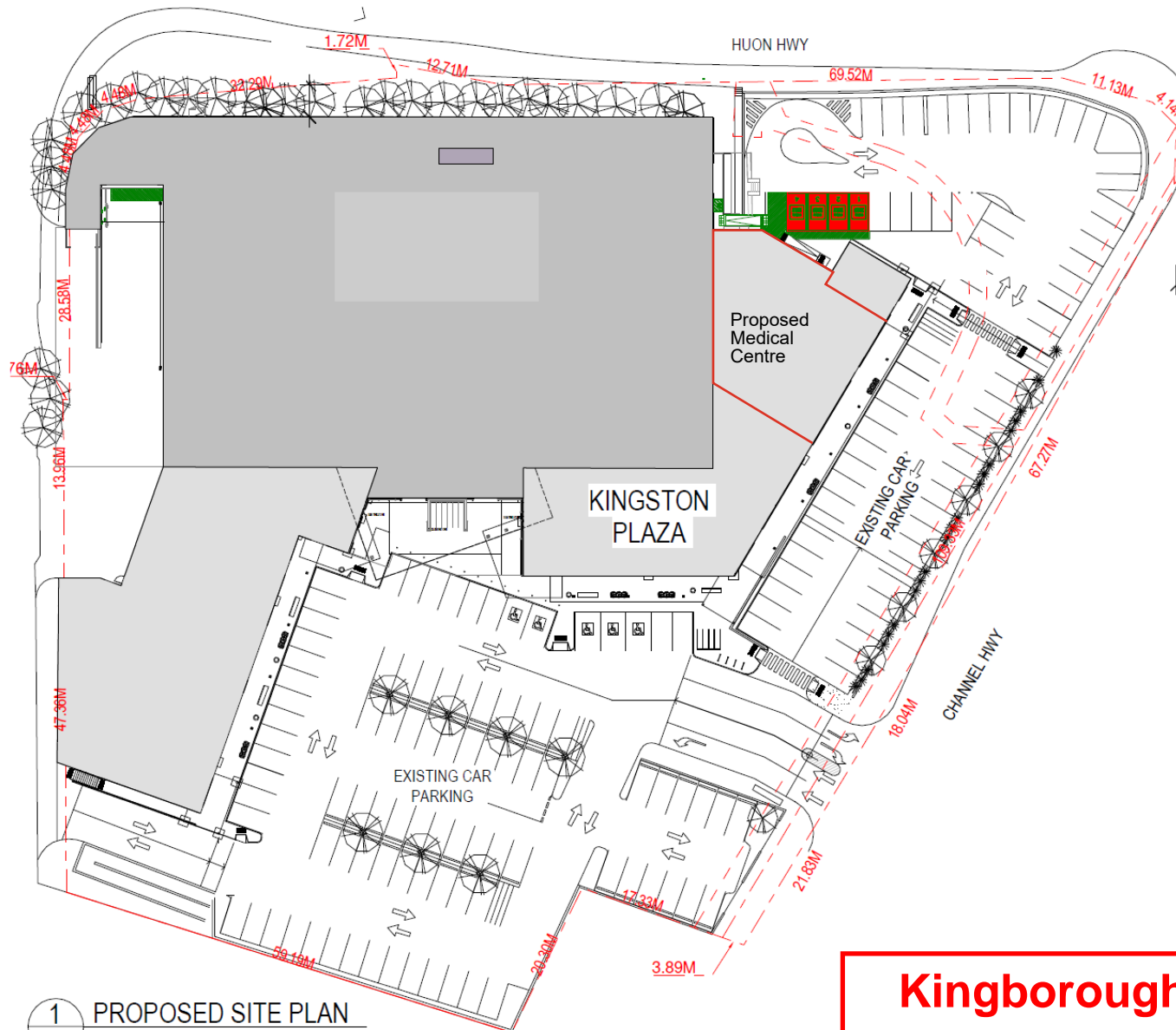
- Application Form
- Copy of Title

NOTE: The documents included for advertising (public notice) have been provided by the applicant. The advertising of the documentation does not confirm that Council agrees with, or endorses, the content or assessments.

Representations:

Representations must be provided in writing to Council stating the reasons why you support or object to the application. Representations for this application must be submitted by 11.59pm on **28 January 2026**; and can be delivered in person to the Civic Centre, posted to Locked Bag 1, Kingston 7050 or emailed to kc@kingborough.tas.gov.au.





1 PROPOSED SITE PLAN
A-03 1:500

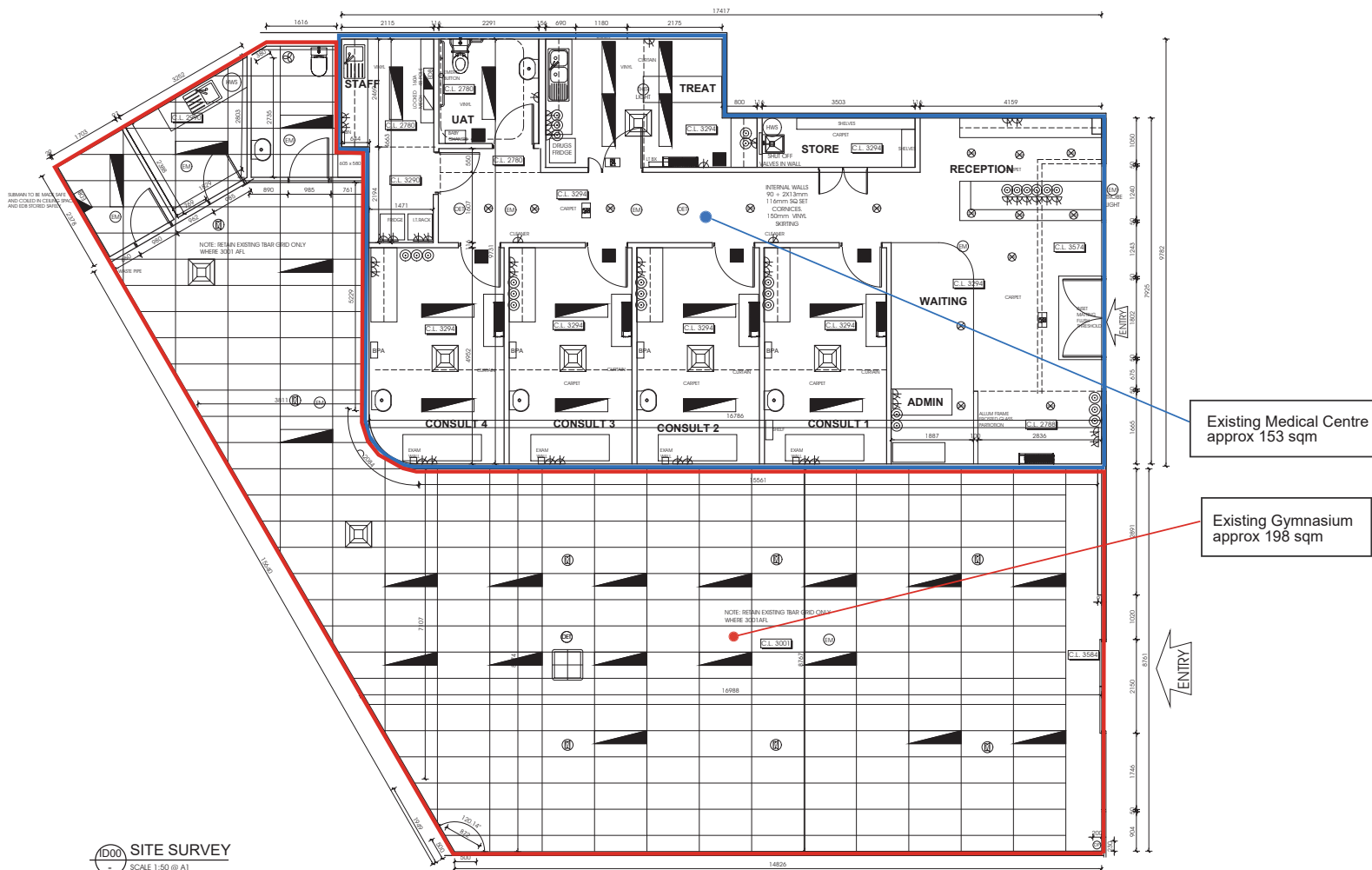
Kingborough Council

Development Application: DA-2025-193

Plan Reference No: P2

Date Received: 19/08/2025

Date placed on Public Exhibition: 14/1/2026



1000 SITE SURVEY
SCALE 1:50 @ A1

Total Area: 351sqm

0m 1m 2m 3m 4m

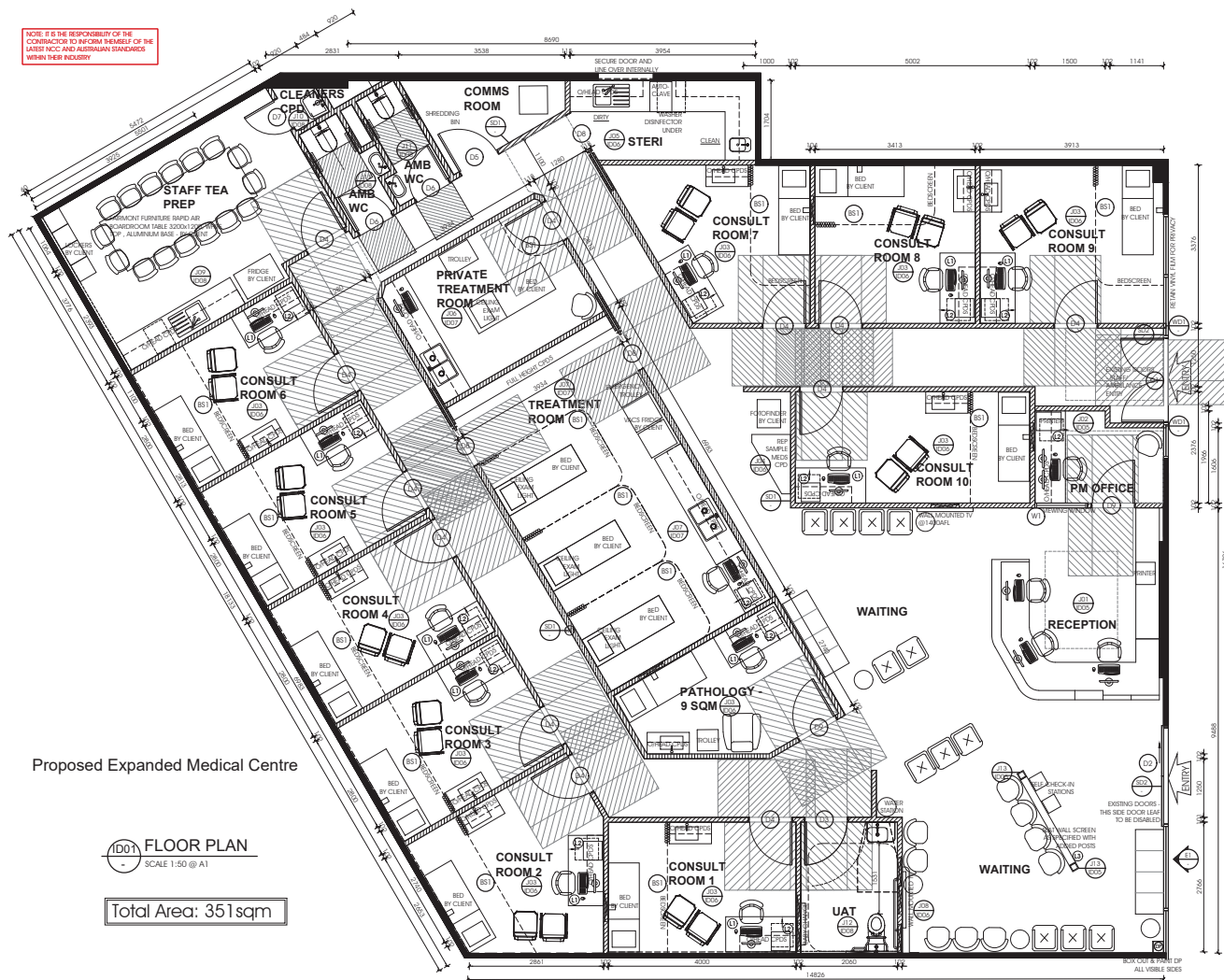
Kingborough Council

Development Application: DA-2025-193

Plan Reference No: P2

Date Received: 19/08/2025

Date placed on Public Exhibition: 14/1/2026



Kingborough Council

Development Application: DA-2025-193

Plan Reference No: P2

Date Received: 19/08/2025

Date placed on Public Exhibition: 14/1/2026

Development Application: DA-2025-193
Plan Reference No: P2
Date Received: 19/08/2025
Date placed on Public Exhibition: 14/1/2026



<div><div><div><input type="checkbox"/> PDF by others</div><div><input type="checkbox"/> CAD by others</div><div><input type="checkbox"/> Paper copy by oth.</div><div><input type="checkbox"/> Survey by CCI</div></div><div><div><div><input type="checkbox"/> Preliminary</div><div><input type="checkbox"/> Approval</div><div><input type="checkbox"/> Construction</div></div><div><div><div><input type="checkbox"/> Information</div><div><input type="checkbox"/> As Built</div></div></div></div></div>	<div>GENERAL NOTES</div> <div>This copyright on this drawing is reserved. It is issued to you in confidence and must not be reproduced or disclosed to third parties without our prior permission.</div> <div>Do not scale from this drawing. Any discrepancies in dimensions or details on or between these drawings should be drawn to our attention. All dimensions are in millimetres unless noted otherwise. Any surveyed information incorporated within this drawing cannot be guaranteed as accurate unless confirmed by fixed dimension.</div> <div>Square metreage areas noted on this drawing are approximate only and have not been measured in accordance the Property Council of Australia's method of measurement guidelines 1997. Do not use to calculate or settle any area.</div>	<div>REV</div> <div>DESCRIPTION</div> <div>DATE</div> <div>TF1</div> <div>FACADE ELEVATION</div> <div>23/07/25</div> <div>TF2</div> <div>FACADE ELEVATION REVISIONS</div> <div>29/07/25</div> <div>TF3</div> <div>FACADE ELEVATION REVISION</div> <div>07/08/25</div> <div></div> <div></div> <div></div> <div></div> <div></div> <div></div>	<div><div><div><div>concept.</div><div>PEOPLE-POWERED WORKSPACES</div><div>p: (03) 9650 8494</div></div><div><div>LV10, 140 BOURKE STREET, MELBOURNE, VIC 3000</div><div>e: hello@conceptci.com.au w: www.conceptci.com.au</div></div></div></div>	<div><div><div>PROJECT</div><div><div><div><div><div></div><div>MEDICAL CENTRE</div><div>Kingston Plaza General Practice</div></div></div></div><div><div>PARTNERED HEALTH</div><div>SHOP 12A/20 CHANNEL HWY, KINGSTON PLAZA HOBART TAS 7050</div></div></div></div><div><div>TITLE</div><div>GENERAL ARRANGEMENT PLAN</div></div></div>	<div><div>DRAWN</div><div>EH</div><div>CHECKED</div><div>JR</div><div>ISSUE DATE</div><div>07/08/25</div></div> <div><div>PROJECT NUMBER</div><div>3284</div><div>REVISION</div><div>TF3</div></div> <div><div>SCALE</div><div>1 : 50 @ A2</div><div>DWG. NO.</div><div>A1-01</div></div>
---	---	---	--	--	---

Kingborough Council

Development Application: DA-2025-193

Plan Reference No: P2

Date Received: 19/08/2025

Date placed on Public Exhibition: 14/1/2026

NOTE:
NO DEMOLITION, ALTERATIONS OR AMENDMENT TO THE EXISTING FACADE IS PROPOSED.

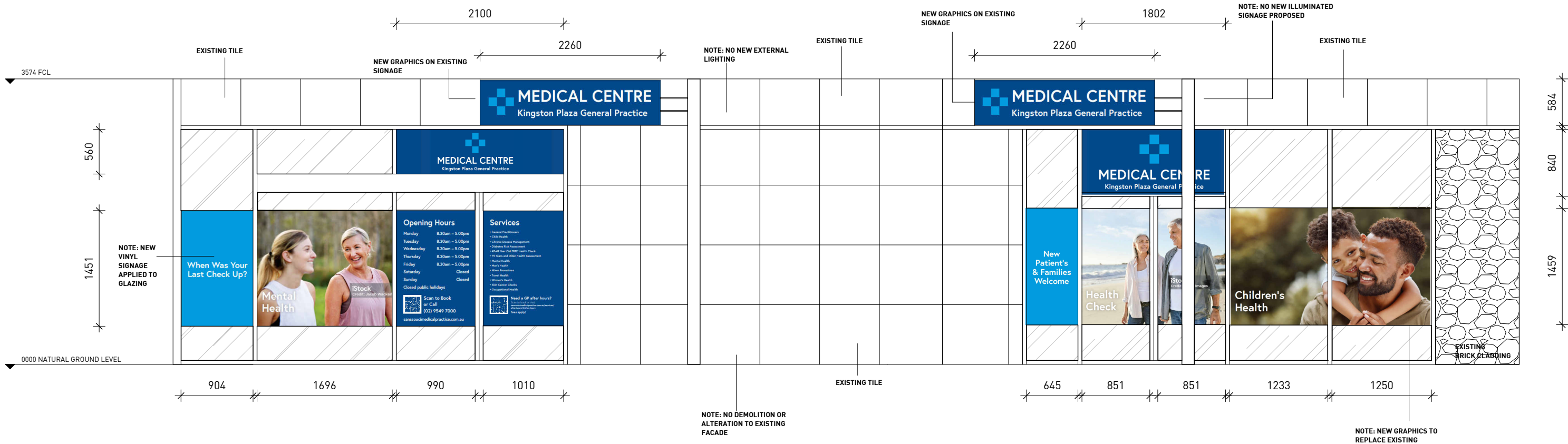
NO NEW EXISTING LIGHTING IS PROPOSED.

ALL NEW SIGNS ON WINDOWS/DOORS ARE VINYL STICK ON SIGNS THAT ARE APPLIED TO GLAZING.

NO NEW ILLUMINATED SIGNAGE IS PROPOSED.

NO CHANGE IN ANY EXTERNAL CLADDING, COLOURS OR FINISHES IS PROPOSED.

EXISTING BELOW AWNING SIGN ABOVE THE VACANT TENANCY (STILL CONTAINING THE GYM SIGN AND LOGO) IS EXISTING BUT WILL HAVE A CHANGE IN LETTERING AND GRAPHICS ONLY AND WILL NOT BE ILLUMINATED.



1 | Facade Proposed Elevation

SCALE: 1 : 50



<div>DATA SOURCE</div> <div><input type="checkbox"/> PDF by others</div> <div><input type="checkbox"/> CAD by others</div> <div><input type="checkbox"/> Paper copy by oth.</div> <div><input type="checkbox"/> Survey by CCI</div> <div><input type="checkbox"/> Preliminary</div> <div><input type="checkbox"/> Approval</div> <div><input type="checkbox"/> Construction</div> <div><input type="checkbox"/> Information</div> <div><input type="checkbox"/> As Built</div>	<div>GENERAL NOTES</div> <div>This copyright on this drawing is reserved.</div> <div>It is issued to you in confidence and must not be reproduced or disclosed to third parties without our prior permission.</div> <div>Do not scale from this drawing. Any discrepancies in dimensions or details on or between these drawings should be drawn to our attention.</div> <div>All dimensions are in millimetres unless noted otherwise.</div> <div>Any surveyed information incorporated within this drawing cannot be guaranteed as accurate unless confirmed by fixed dimension.</div> <div>Square metreage areas noted on this drawing are approximate only and have not been measured in accordance the Property Council of Australia's method of measurement guidelines 1997. Do not use to calculate net lettable area.</div>	<table><tr><th>REV</th><th>DESCRIPTION</th><th>DATE</th></tr><tr><td>TF1</td><td>FACADE ELEVATION</td><td>23/07/25</td></tr><tr><td>TF2</td><td>FACADE ELEVATION REVISIONS</td><td>29/07/25</td></tr><tr><td>TF3</td><td>FACADE ELEVATION REVISION</td><td>07/08/25</td></tr><tr><td> </td><td> </td><td> </td></tr><tr><td> </td><td> </td><td> </td></tr><tr><td> </td><td> </td><td> </td></tr><tr><td> </td><td> </td><td> </td></tr><tr><td> </td><td> </td><td> </td></tr><tr><td> </td><td> </td><td> </td></tr></table>	REV	DESCRIPTION	DATE	TF1	FACADE ELEVATION	23/07/25	TF2	FACADE ELEVATION REVISIONS	29/07/25	TF3	FACADE ELEVATION REVISION	07/08/25																			<div><div>concept.</div><div>PEOPLE-POWERED WORKSPACES</div><div>p: (03) 9650 8494</div><div>LV10, 140 BOURKE STREET, MELBOURNE, VIC 3000</div><div>e: hello@conceptci.com.au w: www.conceptci.com.au</div></div>	<div><div>PROJECT</div><div><div>MEDICAL CENTRE</div><div>Kingston Plaza General Practice</div></div><div>PARTNERED HEALTH</div><div>SHOP 12A/20 CHANNEL HWY, KINGSTON PLAZA HOBART TAS 7050</div></div>	<table><tr><td>DRAWN</td><td>CHECKED</td><td>ISSUE DATE</td></tr><tr><td>EH</td><td>JR</td><td>07/08/25</td></tr></table>	DRAWN	CHECKED	ISSUE DATE	EH	JR	07/08/25
	REV	DESCRIPTION	DATE																																						
	TF1	FACADE ELEVATION	23/07/25																																						
	TF2	FACADE ELEVATION REVISIONS	29/07/25																																						
	TF3	FACADE ELEVATION REVISION	07/08/25																																						
DRAWN	CHECKED	ISSUE DATE																																							
EH	JR	07/08/25																																							
					<table><tr><td>PROJECT NUMBER</td><td>REVISION</td></tr><tr><td>3284</td><td>TF3</td></tr></table>	PROJECT NUMBER	REVISION	3284	TF3																																
PROJECT NUMBER	REVISION																																								
3284	TF3																																								
					<table><tr><td>SCALE</td><td>DWG. NO.</td></tr><tr><td>1 : 50@ A2</td><td>A1-01</td></tr></table>	SCALE	DWG. NO.	1 : 50@ A2	A1-01																																
SCALE	DWG. NO.																																								
1 : 50@ A2	A1-01																																								

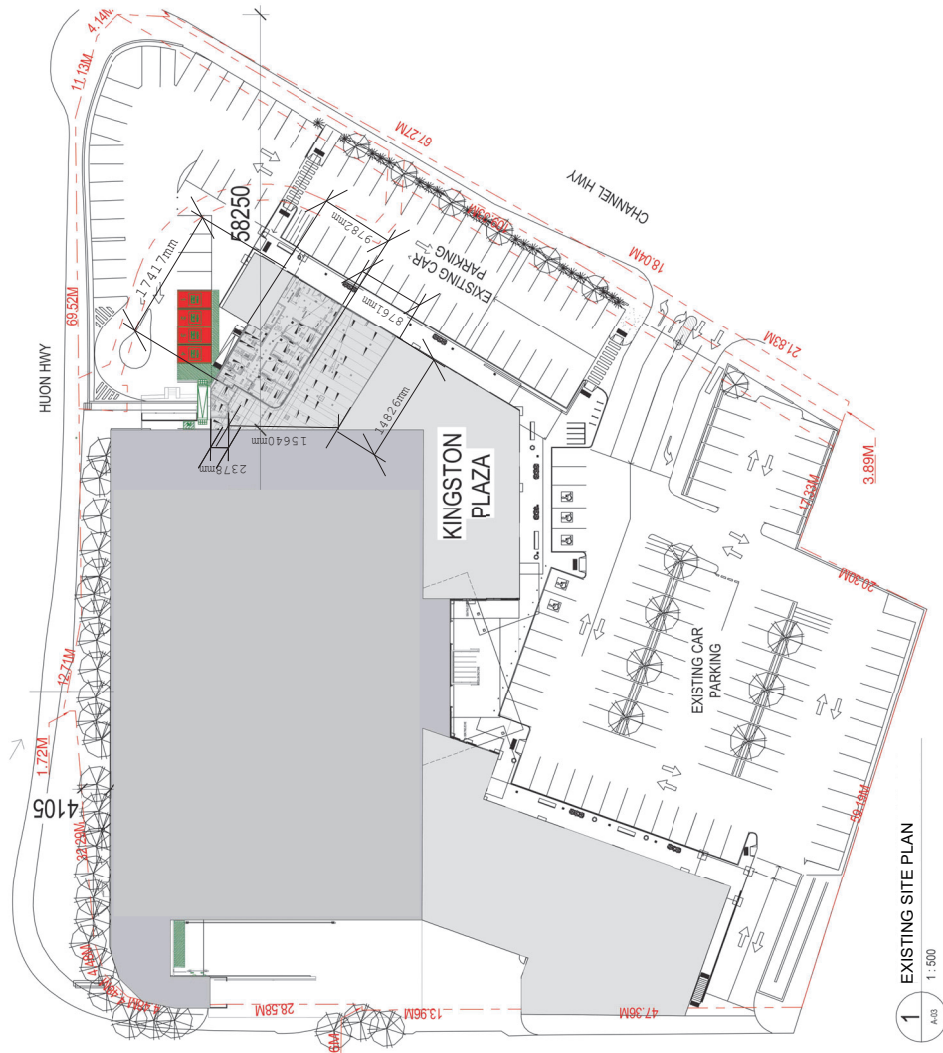
Kingborough Council

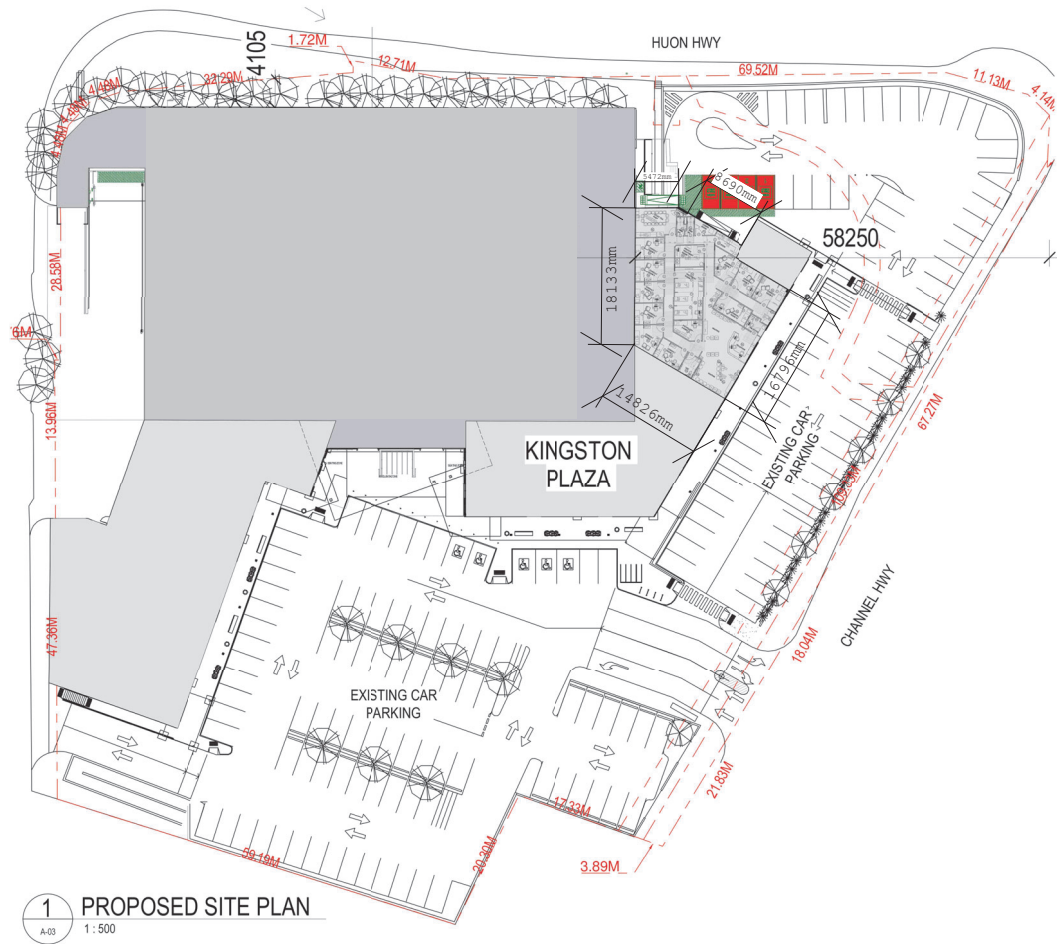
Development Application: DA-2025-193

Plan Reference No: P2

Date Received: 19/08/2025

Date placed on Public Exhibition: 14/1/2026





Kingborough Council

Development Application: DA-2025-193

Plan Reference No: P2

Date Received: 19/08/2025

Date placed on Public Exhibition: 14/1/2026