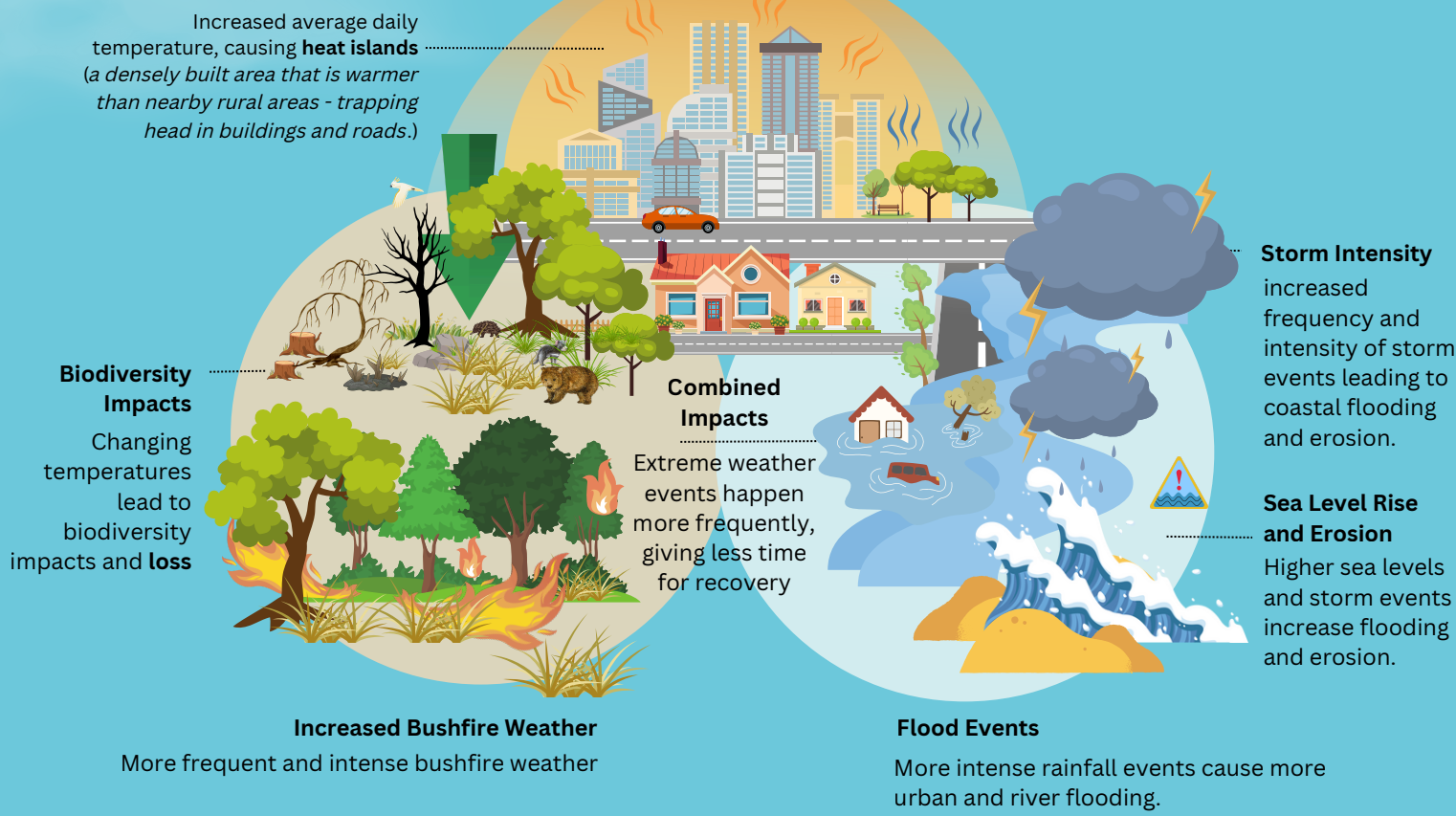


# CLIMATE CHANGE REPORT CARD 2023-2024

## KINGBOROUGH COUNCIL'S

Climate change response strategies and targets for 2035

## CLIMATE IMPACTS ARE ALREADY OCCURRING



## KINGBOROUGH COUNCIL'S CLIMATE CHANGE ADAPTATION STRATEGIES

Climate change will have significant impacts on the community, Council built spaces, and natural areas. Adaptation strategies respond to these risks by planning for a future with a changed climate.



### Rainfall and Riverine Flooding increase

Flood studies on present and future risks to community and stormwater network were conducted.

Council participated in regional and national conversations about future flood design for stormwater systems.

Coastal vegetation protection was delivered for safeguarding native wetlands and coastal vegetation to buffer against storm events and erosion.



### Bushfire Weather increase

Sparking Conversations, Igniting Action community resilience program was rolled out.

The 2024 Greater Hobart Bushfire Index was released.

Council participated in Bushfire Awareness and Preparedness events with Tasmanian Fire Service.



### Increased Impacts on Natural Environment

Council's Revegetation Program monitors heat resilience of plant species in natural areas.

Council participated in regional collaboration to better understand current and future impacts on biodiversity and plan for coordinated management responses.

Council engaged the community through citizen science programs to strength local stewardship and extend environmental monitoring to build capacity



### Coastal Erosion and Sea Level Rise

Coastal Hazards Policy was approved. The policy sets out how Council will manage risks like erosion, flooding, and sea level rise, guiding future planning, development, and infrastructure decisions.

Coastal hazards risk assessments of Council works were conducted. A review of Council assets (e.g. roads, buildings, stormwater systems) to identify which ones are vulnerable to coastal hazards, helping to plan protective or adaptive measures.

A community-focused project in Snug was progressed to explore ways to adapt to rising sea levels and erosion.



### Increase in Extreme Heat Events

Design features to mitigate the impact of an increase in the number of extremely hot days was incorporated into the redesign of Kingston's main road.

Council participated in Drought Ready Tasmania project.

The Revegetation Program monitors the heat resilience of native flora.



### More Frequent Natural Hazards

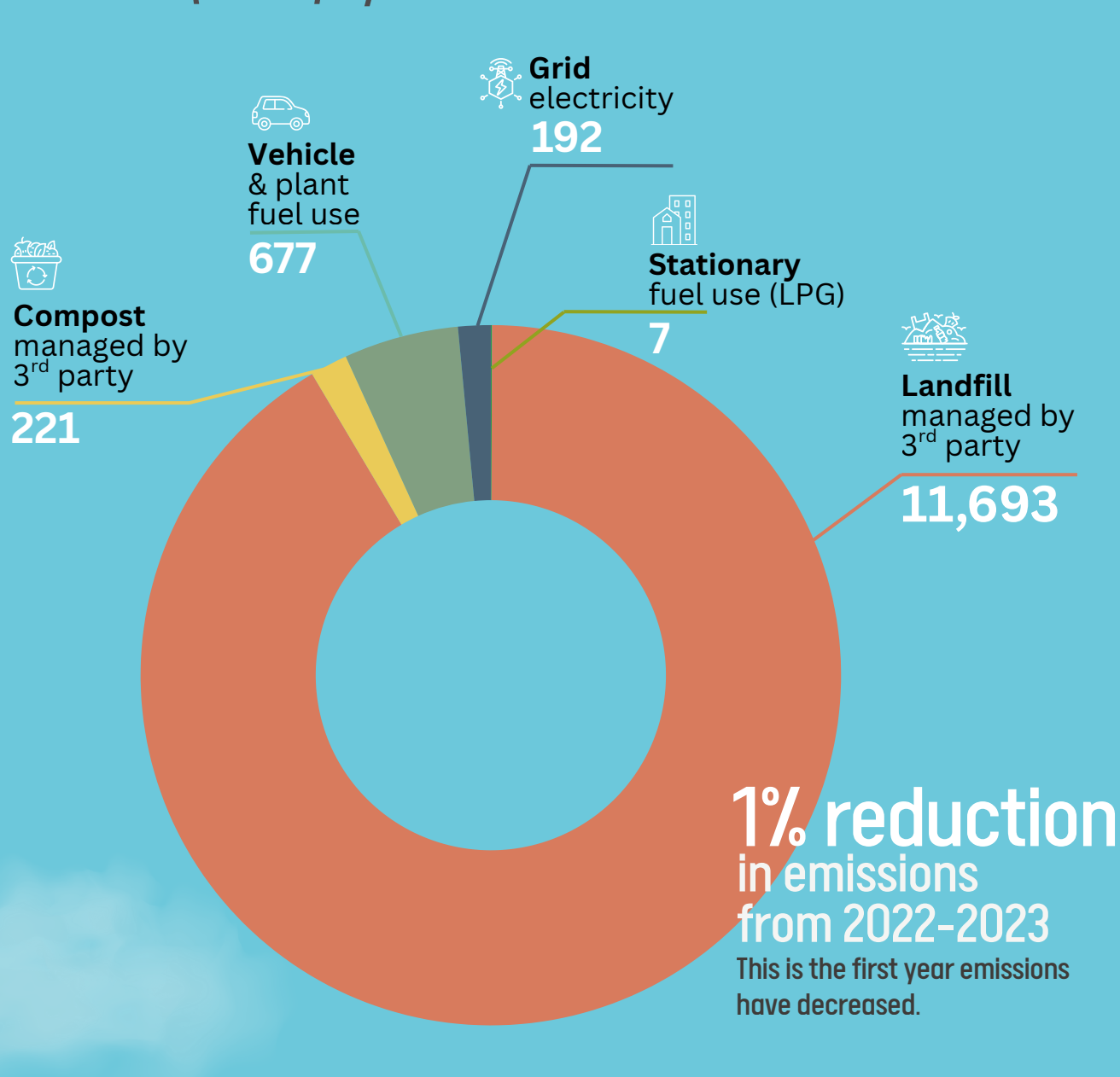
A Council Risk Assessment Framework was designed to assess and plan for extreme events.

The Be-Ready Bruny Project was rolled out on community readiness.

## KINGBOROUGH COUNCIL'S CLIMATE CHANGE MITIGATION STRATEGIES

After declaring climate and biodiversity emergency in 2019, Council committed in 2020 to achieve net-zero emissions by 2035. This work is delivered through emissions mitigation projects.

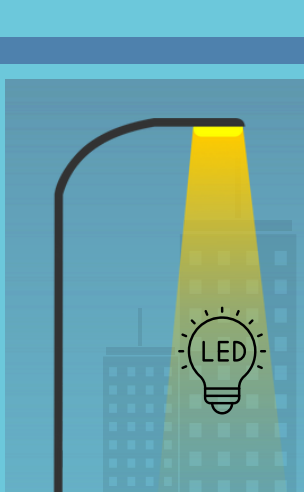
## EMISSIONS REDUCTION ACTIVITIES (tCO2e) by emission source 2023-2024



## EMISSIONS PROFILE

Using 2020 as our baseline

- FOGO rollout
- Grid electricity use down 23%
- LPG use trended down



## ELECTRIC VEHICLES

- EV Charger - grant for public charging facility
- 3 EVs in fleet
- 8 petrol hybrids in fleet



8,122

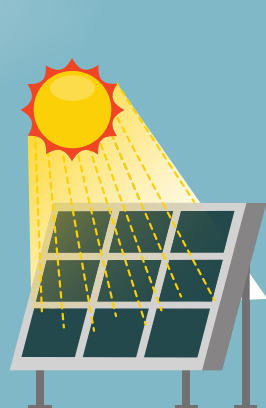
tCO2e AVOIDED through composting

6,292

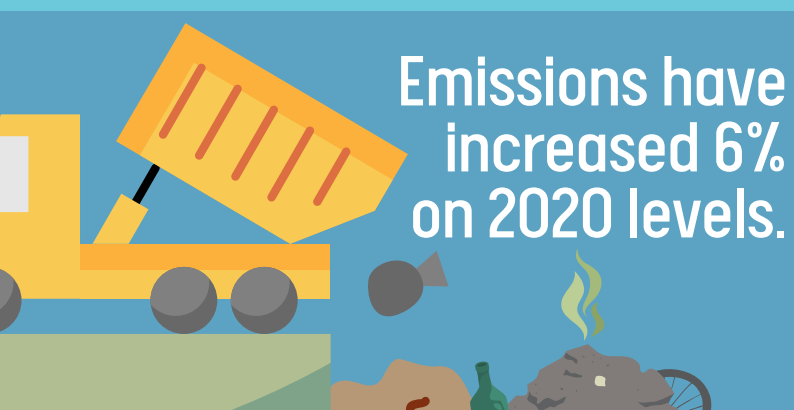
tCO2e AVOIDED through landfill gas capture



212.5MWh generated through our solar panels



Emissions have increased 6% on 2020 levels.



242

HECTARES

PROTECTED

## KINGBOROUGH ENVIRONMENTAL FUND

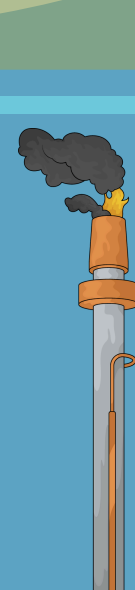
1,539 trees planted for species that can reach over 5 meters in height

## Baretta environmental management



### METHANE FLARING AND MONITORING

- We monitor and flare methane at the retired Barretta Tip, reducing potential impact from these emissions.



## TREES PLANTED 2023-2024

9,812

NATURAL AREAS AND BIODIVERSITY TEAMS REVEGETATION PROGRAM

